

WATER MAIN EXTENSION AND SEWER CONNECTIONS

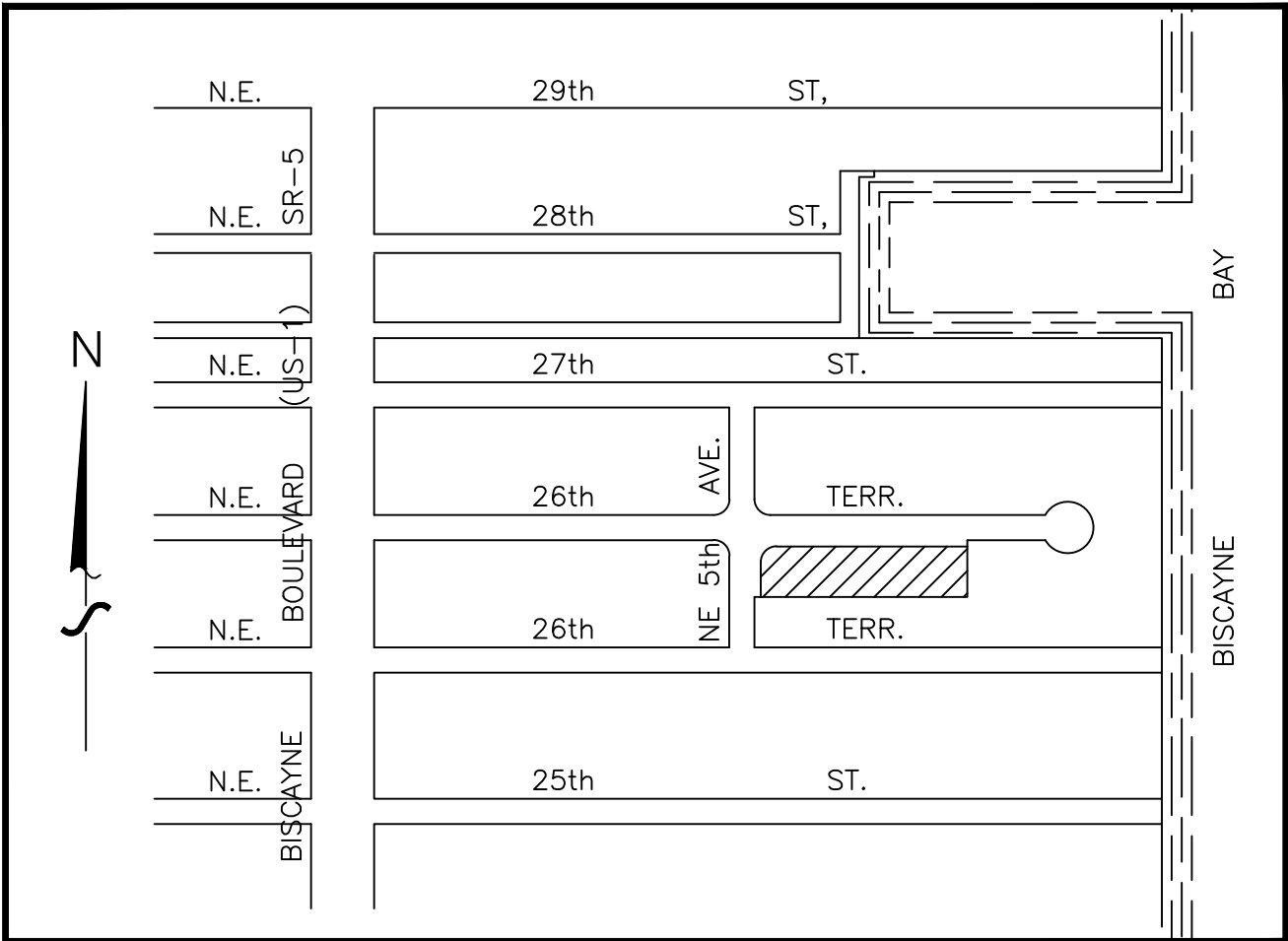
ABSOLUTE BAY LOFTS

500 N.E. 26th TERRACE
MIAMI, FLORIDA

GENERAL NOTES

(NOT A PART OF M-D WASD APPROVAL)

- ALL ELEVATIONS REFER TO THE M.S.L., NATIONAL GEODETIC VERTICAL DATUM (N.G.V.D.).
- ALL WORK TO BE DONE IN COMPLIANCE WITH THE REQUIREMENTS OF AND ACCEPTABLE OF THE CITY OF MIAMI PUBLIC WORKS AND THE BUILDING AND ZONING DEPARTMENTS, AND APPROVED BY MIAMI-DADE COUNTY DEPARTMENTS OF ENVIRONMENTAL RESOURCES MANAGEMENT (DERM).
- IT WILL BE THE CONTRACTOR'S RESPONSIBILITY, AS PART OF THE WORK TO BE DONE, TO COORDINATE HIS WORK WITH WORK BEING INSTALLED BY OTHER CONTRACTORS AND SUB-CONTRACTORS AND OWNER.
- THE CONTRACTOR SHALL VERIFY ALL EXISTING UTILITIES IN THE FIELD AND SHALL NOTIFY THE UTILITY COMPANIES IN THE AREA BEFORE THE START OF CONSTRUCTION. SUPPLEMENTARY ASSISTANCE MAY BE OBTAINED BY CONTACTING THE UNDERGROUND UTILITIES NOTIFICATION CENTER (UNCLE) AT THE TELEPHONE NUMBER 800/432-4770, UNCLE.
- WHERE TRENCHING MAY EXCEED 5 FEET IN DEPTH THE EXCAVATION SHALL COMPLY WITH THE FLORIDA TRENCH SAFETY ACT (SECTION 553.60 - 553.64, FLORIDA STATUTES), AND THE OCCUPATIONAL SAFETY AND HEALTH ADMINISTRATION'S (OSHA) TRENCH EXCAVATION SAFETY STANDARDS, 29 C.F.R. S 1 926.650 SUBPART INCLUDING ALL SUBSEQUENT REVISIONS OR UPDATES TO THESE STANDARDS AS ADOPTED BY THE DEPARTMENT OF LABOR AND EMPLOYMENT SECURITY (DLES). THE CONTRACTOR SHALL CONSIDER ALL AVAILABLE GEOTECHNICAL INFORMATION IN HIS DESIGN OF THE TRENCH EXCAVATION SAFETY SYSTEM.
- THE CONTRACTOR SHALL FURNISH ALL MATERIAL, LABOR, WATER, TOOLS, EQUIPMENT, LIGHT, POWER, TRANSPORTATION, AND OTHER FACILITIES NECESSARY FOR THE EXECUTION AND COMPLETION OF THE WORK. ALL MATERIALS SHALL BE NEW, AND BOTH WORKMANSHIP AND MATERIALS SHALL BE OF GOOD QUALITY. THE CONTRACTOR SHALL, IF REQUESTED TO, FURNISH SATISFACTORY EVIDENCE AS TO THE QUALITY OF THE MATERIALS.
- THE CONTRACTOR SHALL OBTAIN ALL NECESSARY CITY, COUNTY, AND STATE LICENSES PRIOR TO THE BEGINNING OF CONSTRUCTION OF THE PROJECT. IF SPECIAL PERMITS ARE REQUIRED FOR ANY PART OF THE PROJECT, THEY SHALL BE OBTAINED AND EXHIBITED. THE CONTRACTOR SHALL GIVE ALL NOTICES AND COMPLY WITH ALL LAWS, ORDINANCES, RULES, AND REGULATIONS BEARING ON THE CONDUCT OF THE WORK AS DRAWN AND SPECIFIED.
- CONTRACTOR MUST NOTIFY THE OWNER'S REPRESENTATIVE AND THE ENGINEER OF ANY FIELD CONDITION THAT REQUIRES A MODIFICATION TO THE DRAWINGS, PRIOR TO PROCEEDING WITH ANY CHANGES. CHANGE ORDER REQUEST AFTER THE FACT WILL NOT BE CONSIDERED FOR PAYMENT.
- CONTRACTOR MUST PROTECT EXISTING AND NEW DRAINAGE STRUCTURES BY INSTALLING A DOUBLE GEOTEXTILE FILTER ON EACH CATCH BASIN UNTIL ITS CORRESPONDING TRIBUTARY AREA IS PAVED OR RESTORES AND AFTER COMPLETION OF PAVING AND SODDING, ALL CATCH BASIN AND STORM SEWERS MUST BE CLEANED OF SAND, ROCK AND OTHER DELETERIOUS MATERIAL PRIOR TO ACCEPTANCE OF THE WORK.
- IT IS CONTRACTOR RESPONSIBILITY TO PROTECT EXISTING STRUCTURES, FACILITIES AND THOSE UNDER CONSTRUCTION AND TO RESTORE THEM TO THE ORIGINAL CONDITION IF DAMAGE.
- STREETS, SIDEWALK RESTORATIONS SHALL BE ACCORDING TO DETAILS AND APPLICABLE REQUIREMENTS OF THE CITY OF MIAMI PUBLIC WORKS DEPARTMENT.
- THIS WORK IS NOT CONSIDERED COMPLETED UNTIL AN AS-BUILT IS DELIVERED TO THE ENGINEER.
- SITE INFORMATION WAS OBTAINED FROM SURVEY PREPARED BY GUNTER GROUP, INC. LAND SURVEYOR THEIR JOB NO. 04-21436, DATED 08-13-2004.



LOCATION MAP

SCALE: 1"=300'

LEGAL DESCRIPTION:

LOTS 2,4,6,8 AND 10, BLOCK 4 OF "ESCOTTONIA PARK AMENDED AS RECORDED IN PLAT BOOK 4 AT PAGE 161 OF THE PUBLIC RECORDS OF MIAMI-DADE COUNTY, FLORIDA.
ALSO AS KNOW AS:
500, 516, 528, 536 AND 600 N.E. 26th TERRACE MIAMI, FL. 33137

INDEX TO DRAWING

- W-1 COVER AND NOTES
- W-2 PLAN AND PROFILE
- W-3 PLAN, PROFILE & DETAILS

THE FOLLOWING ARE REQUIREMENTS PER DEPARTMENT OF HEALTH (NOT A PART OF M-D WASD APPROVAL)

WATER MAIN HORIZONTAL SEPARATIONS

SEPARATIONS SHALL BE MEASURED OUTSIDE EDGE TO OUTSIDE EDGE.

BETWEEN WATER MAINS AND STORM SEWERS, STORMWATER FORCE MAINS, OR RECLAIMED WATER LINES, SHALL BE 3 FT. MINIMUM.

BETWEEN WATER MAINS AND VACUUM TYPE SEWER PREFERABLY 10 FT. AND AT LEAST 3 FT. MINIMUM.

GRAVITY OR PRESURRE SANITARY SEWER, WASTEWATER FORCE MAINS OR RECLAIMED WATER PREFERABLY 10 FT. AND AT LEAST 6 FT. MAY BE REDUCED TO 3 FT. WHERE BOTTOM OR WATER MAIN IS AT LEAST 6 INCHES ABOVE TOP OF SEWER.

10 FT. TO ANY PART OF ON-SITE SEWER TREATMENT OR DISPOSAL SYSTEM.

WATER MAIN VERTICAL SEPARATIONS

SEPARATIONS BETWEEN WATER MAINS AND GRAVITY SEWER, VACUUM TYPE SEWER, VACUUM TYPE SEWER, STORM SEWERS, TO BE PREFERABLE 12 INCHES, OR AT LEAST 6 INCHES ABOVE, OR AT LEAST 12 INCHES BELOW.

PRESSURE SANITARY SEWER, WASTEWATER OR STORM WATER FORCE MAIN, OR RECLAIMED WATER, AT LEAST 12 INCHES ABOVE OR BELOW *

* NOTE: CENTER ONE-FULL LENGTH OF WATER MAIN PIPE AT CROSSING; ALTERNATIVELY ARRANGE PIPES SO JOINTS ARE AT LEAST 3 FEET FROM JOINTS IN VACUUM, STORM OR STORM FORCE MAINS, AT LEAST 6 FEET FROM JOINTS IN GRAVITY OR PRESSURE SEWERS, WASTEWATER FORCEMANS OR RECLAIMED WATER.

MIAMI-DADE WATER & SEWER DEPARTMENT	
AS-BUILT REQUIREMENTS	GS-0.5

- AT THE COMPLETION OF ANY WATER AND SEWER JOB, THE CONTRACTOR SHALL SUBMIT:
 - "AS-BUILT" MYLAR 24" x 36" (MIN. 4 MIL THICKNESS) FOR EACH PHASE.
 - BLUE LINE (FROM MYLAR) WHICH HAS BEEN SIGNED AND SEALED BY REGISTERED SURVEYOR OR ENGINEER OF RECORD, AND ENDORSED BY THE CONTRATOR. (QTY. OF PRINTS, AS REQUIRED BY THE DEPARTMENT).
- "AS-BUILT" FORMAT:
 - 24" x 36" MYLAR IN INK ONLY.
 - THE WORD "AS-BUILT" IN LARGE LETTERS.
 - TITLE BLOCK WITH DEPARTMENT E.R. NUMBER AND PERTINENT INFORMATION.
 - PREFERRED SCALE TO BE 1" = 40' HORIZONTALLY AND 1" = 4' VERTICALLY.*
 - STREET NOMENCLATURE.
 - SEPARATE WATER AND SEWER PROFILE.
 - STATION MAIN STARTING WITH 0 + 00 AT PERMANENT REFERENCE POINT (I.E. \angle , ξ , ETC.) AND TO RUN CONTINUOUSLY TO END OF MAIN AT OF PIPE.
 - EASEMENTS, IF ANY, TIED TO PERMANENT REFERENCE POINT.
 - IDENTIFY ALL CONTROL LINES (I.E. BLDG. LINE, ϕ , R/W, ETC.).
 - ALL "PROPOSED" INFORMATION TO BE REMOVED FROM MYLAR, LEAVING ONLY "AS-BUILT" INFORMATION REFLECTED IN DRAWINGS.
- WATER "AS-BUILTS" MUTS INCLUDE:
 - PLAN SHOWING SIZE, MATERIAL AND OFFSET OF MAIN, DEFLECTIONS (IF ANY) STATION OF SERVICES, HYDRANTS AND FITTINGS AT THE MAINLINE (IF PERPENDICULAR TO IT), AND AT MAIN AND END OF SERVICE IF ANY OTHER ANGLE, AND DEFLECTION OF PIPE, IF ANY.
 - PROFILE SHOWING TOP OF GROUND AND TOP OF PIPE ELEVATIONS AT EVERY 100' STATION AND AT ANY CHANGE IN GRADE (WITH CORRESPONDING STATION), SIZE AND MATERIAL OF PIPE AND REFERENCE TO PLAN.
- SEWER "AS-BUILTS" MUST INCLUDE:
 - PLAN SHOWING MANHOLE NUMBER, SIZE AND MATERIAL OF PIPE, DEFLECTION* IF ANY (FORCE MAIN ONLY), AND LOCATION OF LATERALS WITH REFERENCE TO MANHOLE.
 - PROFILE SHOWING MANHOLE NUMBER (AS PER PLAN), RIM AND INVERT ELEVATIONS (IF MORE THAN ONE INVERT, LABEL NORTH, SOUTH, ETC.), AND STATION STARTING AT 0 +00 AT DOWNSTREAM MANHOLE.

* OTHER SCALES MAY BE PERMITTED, BUT MUST BE APPROVED BY THE DEPARTMENT PRIOR TO PREPARATION OF DRAWINGS.
- FORCE MAIN "AS-BUILTS", SAME AS WATER.

MIAMI-DADE WATER & SEWER DEPARTMENT	
STANDARD REQUIREMENTS FOR WATER AND SEWER CONSTRUCTION	GS-0.5

- ALL MATERIALS AND LABOR UNDER THIS PROJECT SHALL BE IN STRICT ACCORDANCE WITH THE REQUIREMENTS OF THE MIAMI-DADE WATER AND SEWER DEPARTMENT AND SHALL CONFORM TO THE STANDARDS AND SPECIFICATIONS AVAILABLE AND ON FILE WITH THE DEPARTMENT. SUBMIT SHOP DRAWINGS FOR ALL MATERIALS.
- COVER OVER WATER OR SEWER FORCE MAINS SHALL BE 4'-0" MIN.
- ALL MAIN LINE VALVES SHALL BE INSTALLED COMPLETE WITH 10" RISER PIPES AND No. 3 OR 53 VALVE BOXES. FIRE HYDRANTS AND SERVICE VALVES SHALL BE INSTALLED COMPLETE WITH 6" RISER PIPES AND No. 2 VALVE BOXES.
- ALL FORCE MAIN SERVICE CONNECTIONS INTO PRESSURE TRANSMISSIONS MAINS SHALL HAVE A SHUT OFF VALVE AND CHECK VALVE AT THE POINT OF ENTRY.
- ALL GRAVITY SYSTEMS SHALL BE CONSTRUCTED IN ACCORDANCE WITH DEPARTMENT STANDARDS.
- ALL WATER METERS WILL BE INSTALLED BY THE MIAMI-DADE WATER AND SEWER DEPARTMENT PROVIDING THE APPROPRIATE CHARGES HAVE BEEN PREPAID.
- FIRE HYDRANTS REQUIREMENTS (NUMBER AND LOCATION) SHALL BE AS REQUIRED BY DADE COUNTY FIRE DEPARTMENT OR THE APPROPRIATE FIRE AGENCY WITH INSTALLATION IN ACCORDANCE WITH DEPARTMENT STANDARDS.
- CONTRACTOR MUST CALL M-D WASD INSPECTION DIVISION TO ARRANGE FOR A PRECONSTRUCTION MEETING 48 HRS. PRIOR TO PROPOSED START OF CONSTRUCTION. CONTACT ONE CALL CENTER 48 HRS. PRIOR TO EXCAVATION.
- DEPARTMENT PERSONEL WILL INSPECT ALL FACILITIES APPROVED BY THIS DEPARTMENT. ALL OTHER REQUIREMENTS OF THE PERMITTING AGENCY SHALL BE IN ACCORDANCE WITH THEIR STANDARDS AND REQUIREMENTS.
- WORK PERFORMED UNDER THIS PROJECT WILL NOT BE CONSIDERED AS COMPLETE UNTIL FINAL ACCEPTANCE OF THE SYSTEM BY THE DEPARTMENT AND UNTIL THE FOLLOWING DOCUMENTS ARE RECEIVED AND APPROVED BY THE DEPARTMENT.
 - EASEMENT, IF REQUIRED.
 - CONTRACTOR'S WAIVER AND RELEASE OF LIEN.
 - ABSOLUTE BILL OF SALE.
 - CONTRACTOR'S LETTER OF WARRANTY (I.E., LETTER AGREEMENT).
 - DEVELOPER'S CONTRACT BOND (I.E., CONTRACT AGREEMENT).
- "AS-BUILT" 4 MIL MYLAR 24" x 36" SHOWING SPECIFIC LOCATION, DEPTHS, ETC., OF ALL WATER FACILITIES AS LOCATED BY A LICENSED SURVEYOR, ALONG WITH PRINTS OF "AS-BUILT" WHICH HAVE BEEN SIGNED AND SEALED BY A REGISTERED SURVEYOR OR ENGINEER OF RECORD, AND ENDORSED BY THE CONTRACTOR. (No. OF PRINTS: 3-FOR WATER, 4-FOR SEWER AND 5-FOR FORCE MAIN OR PUMP STATION PROJECTS).
- ALL NEW CONNECTIONS FROM EXISTING DEPARTMENT MAINS TO BE MADE BY DEPARTMENT FORCES ONLY. THE CONTRACTOR TO EXCAVATE AT REQUIRED LOCATIONS, PROVIDE AND INSTALL MATERIAL WITH FITTINGS, PRIOR TO TAP.
- AN APPROVED PAVING AND DRAINAGE PLAN MUST BE SUBMITTED TO M-D WASD FOR ALL NEW SUBDIVISIONS PRIOR TO APPROVAL OF WATER AND SEWER PERMIT PLANS, UPON REQUEST.
- UNLESS OTHERWISE SPECIFIED, ALL TAPS 20 INCHES AND SMALLER FOR CONNECTIONS TO EXISTING MAINS WITH A TAPPING SLEEVE AND TAPPING VALVE WILL BE PERFORMED BY DEPARTMENT FORCES. UNDER NO CIRCUMSTANCES WILL THE CONTRACTOR BE PERMITTED TO TAP EXISTING MAINS IN THE SIZE RANGE SPECIFIED ABOVE.

LEGEND & ABBREVIATIONS					
EXISTING			PROPOSED		
ABBREVIATION	SYMBOL	DEFINITION	ABBREVIATION	SYMBOL	DEFINITION
C	---	CENTER LINE	C.I.	---	CAST IRON
M	---	MONUMENT LINE	D.I.P.	---	DUCTILE IRON PIPE
P	---	PROPERTY LINE	P.V.C.	---	POLYVINYL CHLORIDE
R/W	---	RIGHT-OF-WAY LINE		---	RUN-OFF DIRECTION
4"G	---	GAS MAIN & SIZE	4"G	---	GAS MAIN & SIZE
4"WM	---	WATER MAIN & SIZE	4"WM	---	WATER MAIN & SIZE
WM	---	WATER METER	WM	---	METER INSTALLATION
GV	---	GATE VALVE	GV	---	GATE VALVE
MH	●	MANHOLE	MH	●	MANHOLE
ST-MH	●	STORM-MANHOLE	ST-MH	●	STORM-MANHOLE
CB	□	CATCH BASIN	CB-1	□	CATCH BASIN & NUMBER
TRENCH	---	TRENCH DRAIN	25' ET	---	FILTRATION TRENCH & LENGTH
ELEV.	---	GRADE ELEVATIONS	ELEV.	---	GRADE ELEVATIONS
FH	---	FIRE HYDRANT	FH	---	FIRE HYDRANT
ASP.	---	ASPHALT PAVEMENT	ASP.	---	ASPHALT PAVEMENT
E.L.A.	---	LANDSCAPED AREA	L.A.	---	LANDSCAPED AREA
TBP	---	TURF BLOCK PAVEMENT	TBP	---	TURF BLOCK PAVEMENT
SIGN	---	SIGN	SIGN R-1.1	---	STOP SIGN R-1.1
TL	---	STREET STANDARD LIGHT TO REMAIN	TL-1	---	STREET STANDARD LIGHT & NUMBER

Call 48 hours
before you dig

It's the Law!
1-800-432-4770

Sunshine State One Call of Florida, Inc.



Shop Drawing Prepared By:

SETOFPLANS.COM
ENGINEERING | ARCHITECTURAL | SURVEYING
Providing Precision with Excellence
Serving South Florida Since 2004
Contact: Diego Herrera - Call Us: 786.657.9924
www.setofplans.com - Email: info@setofplans.com

Revisions	Date

WATER MAIN EXTENSION

PLAN & PROFILE

ABSOLUTE BAY LOFTS
7 STORY BUILDING WITH 73 APARTMENTS
500 N.E. 26th TERRACE
MIAMI, FLORIDA 33137

Seal:

VILLANUEVA
Associates, Inc.
Civil Engineers
AC No. 0001911
299 Alhambra Circle, Suite 406
Coral Gables, Florida 33134 • Phone (305) 448-7274
PLINIO M. VILLANUEVA P.E. FL. No. 11381

Date: JULY 22, 05

Scale: AS NOTED

Drawn: Invention, Corp.

Job: 05-112

Sheet

W-1

Of 3 Sheets

