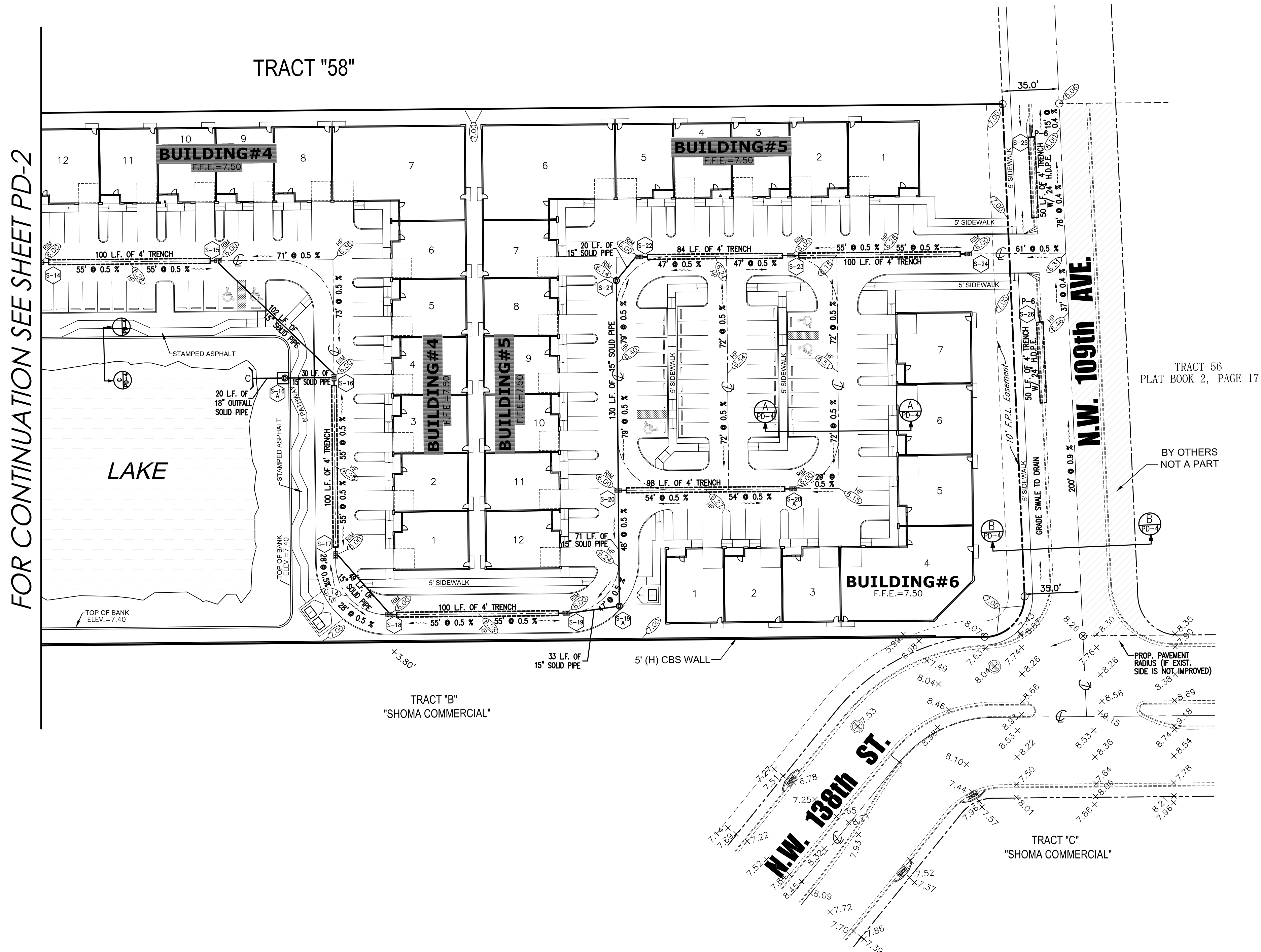
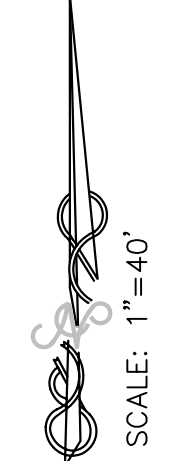


PAVING, GRADING & DRAINAGE

"OKEECHOBEE CENTRE"



FOR CONTINUATION SEE SHEET PD-2



Seal

Victor Reeve P.E.
13832 SW 156 STREET
MIAMI, Florida 33177
PH: 305 378 6925
P.E.: 12324

DESIGN NO.	NO.	REVISIONS
V. Reeve		
DRAWN		
IEC		
DATE		
NOV. 2006		

Rodriguez Group of
Florida, LLC.

PAVING, GRADING &
DRAINAGE PLAN

OKEECHOBEE CENTRE
VICINITY OF N.W. 138th ST. AND N.W. 112th AVENUE
HIALEAH GARDENS - FLORIDA

JobNo. 060262-PD
SHEET 3 OF 6
PD-3

PATH FILE: D:\2005\06-03\0602-0005\060262_P&D_11-01-06.dwg

STRUCTURE TABLE

STRUCTURE NUMBER	STRUCTURE TYPE	INLET TYPE	RIM, THROAT OR FLOW LINE ELEV.	INVERT ELEVATION				PIPE SIZE	L.F. OF SOLID H.D.P.E. PIPE	L.F. OF PERFORATED H.D.P.E. PIPE	"G" BAFFLE (FIBER GLASS) & BOTTOM ELEV.	BOTTOM OF STRUCTURE ELEVATION	
				NORTH	SOUTH	EAST	WEST						
S-1	"P"-6"	42" INLET	6.50	-	3.00	-	-	24"	5(S)	50	1.00(S)	(-)-0.50	
S-2	"P"-6"	42" INLET	6.50	3.00	-	-	-	24"	5(N)	50	1.00(N)	(-)-0.50	
S-3	"P" - ALTERNATE "B"	42" INLET	6.00	-	-	-	3.00	-	15"	5(E)	100	1.00(E)	(-)-0.50
S-4	"P" - ALTERNATE "B"	42" INLET	6.00	-	1.70	-	3.00	15"	5(W), 114(S)	-	1.00(W)	(-)-0.50	
S-5	"P" - ALTERNATE "B"	42" INLET	6.00	3.00	-	1.38	-	15"	35(E), 5(N)	35	1.00(N)	(-)-0.50	
S-5A	"P" - MANHOLE	42"	6.18	-	-	3.00	1.38	15"	5(E)	50	1.00(E)	(-)-0.50	
S-6	"P" - ALTERNATE "B"	42" INLET	6.00	-	0.72	-	3.00	15"	5(W), 61(S)	-	1.00(W)	(-)-0.50	
S-7	"P" - ALTERNATE "B"	42" INLET	6.00	-	3.00	-	1.70	15"	5(S)	100	1.00(S)	(-)-0.50	
S-8	"P" - ALTERNATE "B"	42" INLET	6.00	3.00	-	0.72	0.72	15"	5(N), 45(E)	-	1.00(N)	(-)-0.50	
S-9	"P" - ALTERNATE "B"	42" INLET	6.00	0.72	-	1.50	-	15"	5(E)	100	1.00(E)	(-)-0.50	
S-10	"P" - ALTERNATE "B"	42" INLET	6.00	-	-	(-)-0.02	3.00	15"	5(W)	-	1.00(W)	(-)-0.50	
S-10A	POLLUTION CONTROL SYSTEM	OUTFALL MH 42"	7.40	-	-	3.00	(-)-0.02	15"	64(W)	-	-	(-)-0.50	
A	HEADWALL	-	-	-	-	-	3.00	18"	28(W)	-	-	-	
S-11	"P" - ALTERNATE "B"	42" INLET	6.00	3.00	-	-	-	15"	5(N)	86	1.00(N)	(-)-0.50	
S-11A	"P" - MANHOLE	42"	6.14	-	3.00	3.00	-	15"	5(S), 20(E)	-	1.00(S)	(-)-0.50	
S-12	"P" - ALTERNATE "B"	42" INLET	6.00	-	-	3.00	3.00	15"	5(E)	100	1.00(E)	(-)-0.50	
S-13	"P" - ALTERNATE "B"	42" INLET	6.00	-	3.00	3.00	3.00	15"	5(W)	-	1.00(W)	(-)-0.50	
S-13A	POLLUTION CONTROL SYSTEM	OUTFALL MH 42"	7.40	3.00	3.00	-	3.00	15"	48(N)	-	-	(-)-0.50	
B	HEADWALL	-	-	-	-	-	3.00	18"	16(N)	-	-	-	
S-14	"P" - ALTERNATE "B"	42" INLET	7.00	-	-	3.00	3.00	15"	5(E), 83(W)	-	1.00(E)	(-)-0.50	
S-15	"P" - ALTERNATE "B"	42" INLET	7.00	-	3.00	-	3.00	15"	5(W)	100	1.00(W)	(-)-0.50	
S-16	"P" - ALTERNATE "B"	42" INLET	7.00	3.00	3.00	-	3.00	15"	5(S), 102(N)	-	1.00(S)	(-)-0.50	
S-16A	POLLUTION CONTROL SYSTEM	OUTFALL MH 42"	7.40	-	-	3.00	3.00	15"	30(E)	-	-	(-)-0.50	
C	HEADWALL	-	-	-	-	-	3.00	18"	20(E)	-	-	-	
S-17	"P" - ALTERNATE "B"	42" INLET	6.00	3.00	-	3.00	-	15"	5(N)	100	1.00(N)	(-)-0.50	
S-18	"P" - ALTERNATE "B"	42" INLET	6.00	3.00	-	3.00	-	15"	49(N), 5(E)	-	1.00(E)	(-)-0.50	
S-19	"P" - ALTERNATE "B"	42" INLET	6.00	-	-	3.00	3.00	15"	5(W)	100	1.00(W)	(-)-0.50	
S-19A	"P" - MANHOLE	42"	6.36	3.00	-	3.00	15"	33(W)	-	-	(-)-0.50		
S-20	"P" - ALTERNATE "B"	42" INLET	6.00	1.28	3.00	-	15"	71(S), 5(E)	-	1.00(E)	(-)-0.50		
S-20A	"P" - ALTERNATE "B"	42" INLET	6.00	-	-	3.00	15"	5(W)	98	1.00(W)	(-)-0.50		
S-21	"P" - MANHOLE	42"	6.14	-	1.28	3.00	-	15"	13(S)	-	1.00(S)	(-)-0.50	
S-22	"P" - ALTERNATE "B"	42" INLET	6.00	-	-	3.00	3.00	15"	20(W), 5(E)	-	1.00(E)	(-)-0.50	
S-23	"P" - ALTERNATE "B"	42" INLET	6.00	-	-	3.00	3.00	15"	5(W), 5(E)	84	1.00(E,W)	(-)-0.50	
S-24	"P" - ALTERNATE "B"	42" INLET	6.00	-	-	3.00	15"	5(W)	100	1.00(W)	(-)-0.50		
S-25	"P"-6"	42" INLET	6.00	-	3.00	-	-	24"	5(S)	50	1.00(S)	(-)-0.50	
S-26	"P"-6"	42" INLET	6.00	-	3.00	-	-	24"	5(S)	50	1.00(S)	(-)-0.50	

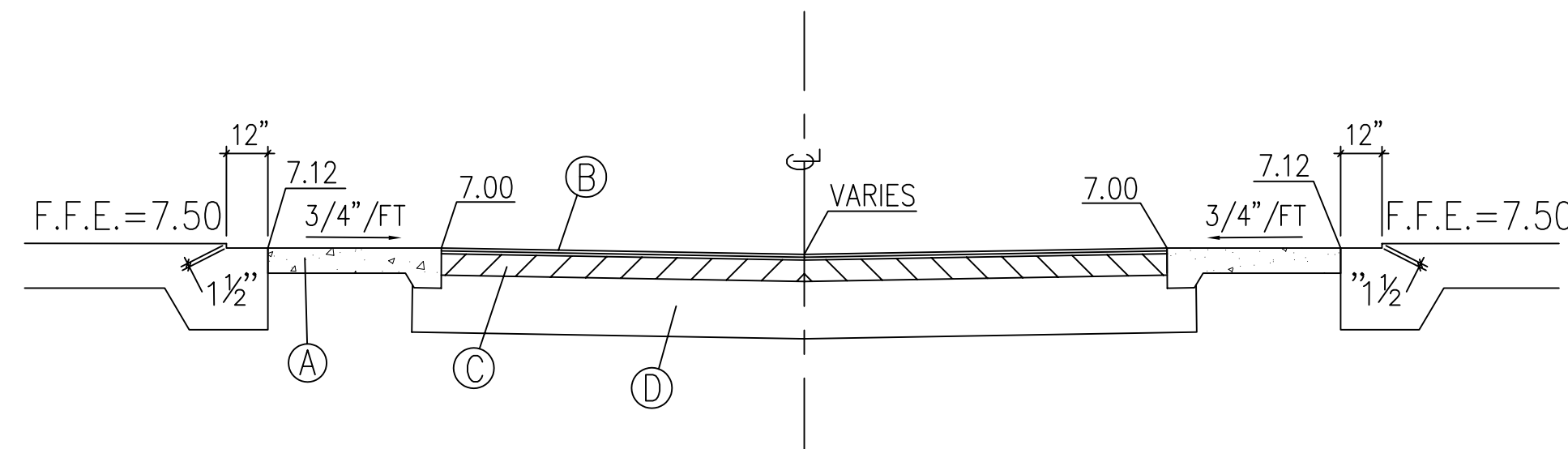
TOTAL LINEAL FEET OF SOLID PIPE=	15"	1088
TOTAL LINEAL FEET OF OUTFALL SOLID PIPE=	18"	64
TOTAL LINEAL FEET OF SOLID PIPE=	24"	20
TOTAL LINEAL FEET OF 48" TRENCH=		1353

GENERAL NOTES

- INLET STRUCTURES (PER S.D.-2.6 TYPE"P") 42" WIDE RECTANGULAR STRUCTURES (Alternates 'B') SHALL BE CONSTRUCTED OF CONCRETE ONLY. THE CONCRETE MAY BE CAST-IN-PLACE OR PRECAST.
- WALL REINFORCEMENT AND THICKNESS ARE FOR EITHER CAST-IN-PLACE OR PRECAST CONCRETE EXCEPT THAT FOR PRECAST CIRCULAR UNITS ASTM Specification C-76, Table III, FOR B WALL REINFORCED CONCRETE PIPE OR PRECAST CIRCULAR UNITS IN ACCORDANCE WITH ASTM Specification C-478 WILL BE ACCEPTABLE. TOP AND FLOOR SLAB THICKNESS AND REINFORCEMENT ARE FOR ALL TYPES OF CONSTRUCTION.
- PRECAST TOP AND/OR FLOOR SLABS MAY BE OF THE SAME CONCRETE AS SPECIFIED IN ASTM Specifications C-478 FOR PRECAST CIRCULAR UNITS.
- SMOOTH FLOW CHANNELS COMPOSED OF CONCRETE, OR BRICK AND MORTAR, SHALL BE CONSTRUCTED IN THE BOTTOMS OF ALL STRUCTURES TO A DEPTH EQUAL TO HALF THE DIAMETER OF THE LARGEST PIPE.
- CORNER FILLETS SHOWN FOR RECTANGULAR STRUCTURES ARE NECESSARY ONLY WHEN STRUCTURES ARE USED IN CONJUNCTION WITH CIRCULAR TOPS.
- STRUCTURES SHALL BE SECURED TO INLET THROATS, RISERS OR MANHOLE TOPS WITH A MINIMUM OF 6-No. 4 BARS 12" LONG.
- MORTAR USED TO SEAL THE PIPE IN THE WALLS OF THE PRECAST UNITS SHALL BE OF SUCH A MIX THAT SHRINKAGE WILL NOT CAUSE LEAKAGE INTO OR OUT OF THE UNITS. MAXIMUM OPENING FOR PIPE SHALL BE MAX. REQUIRED O.D. + 6".
- CONCRETE PROTECTION FOR REINFORCEMENT IN CAST-IN-PLACE OR PRECAST CONCRETE SHALL BE IN ACCORDANCE WITH CHAPTER 7, "BUILDING CODE REQUIREMENTS FOR REINFORCED CONCRETE (ACI 318-71)"

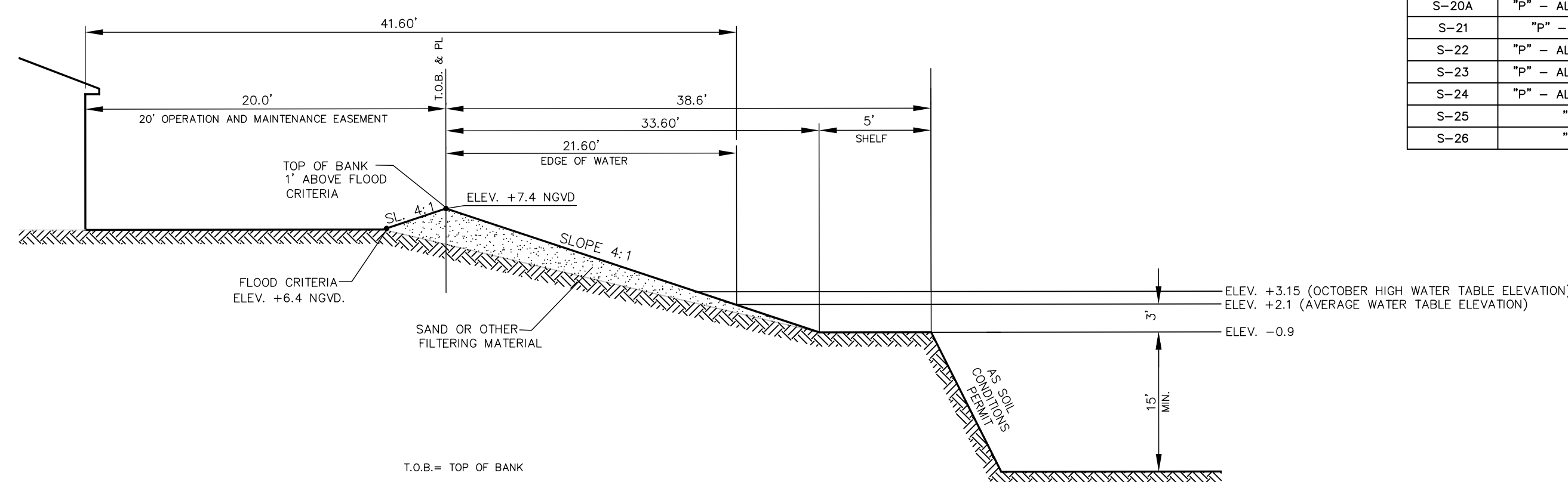
GENERAL NOTES FOR TYPE "P" INLETS

(SD 2.6 SHEET 4 OF 4) DADE COUNTY PUBLIC WORKS STANDARDS

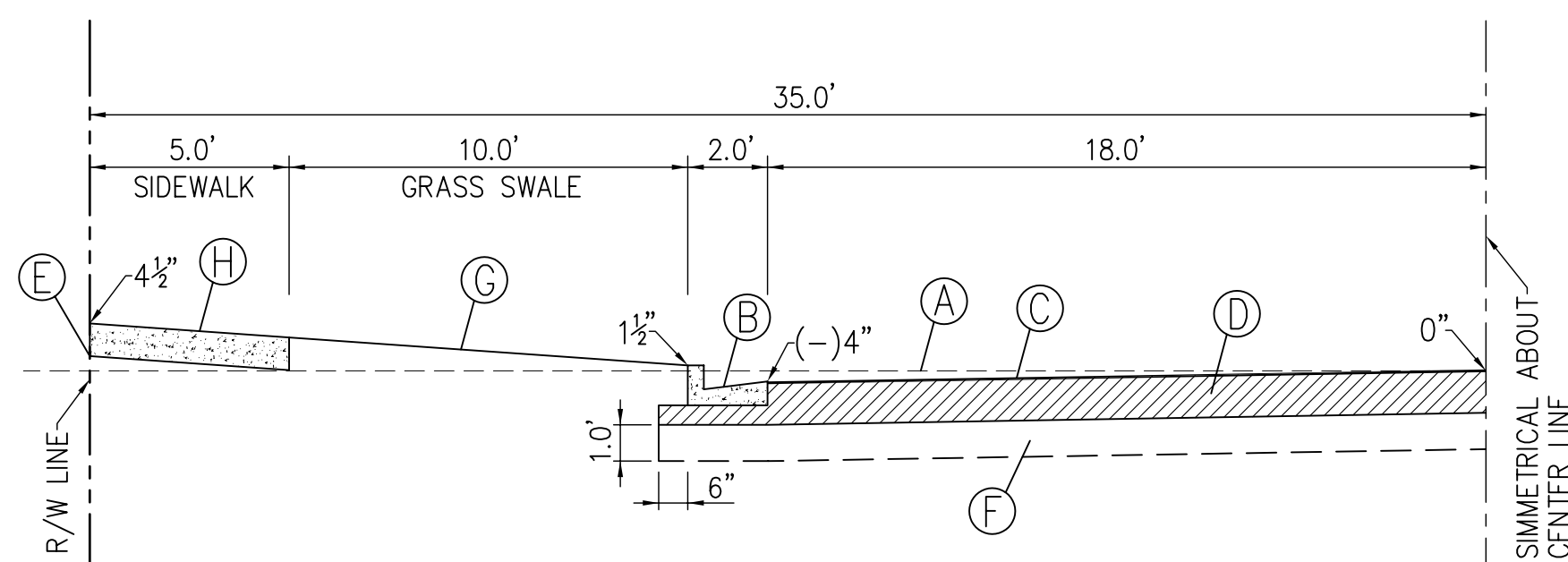


- (A) 5' CONC SIDEWALK
- (B) ASPHALTIC CONCRETE SURFACE COURSE 1 1/4" THICK (PARKING SPACES)
- (C) BASE COURSE PRIMED (6")
- (D) STABILIZED SUBGRADE (12")

SECTION A-A
SCALE: N.T.S.

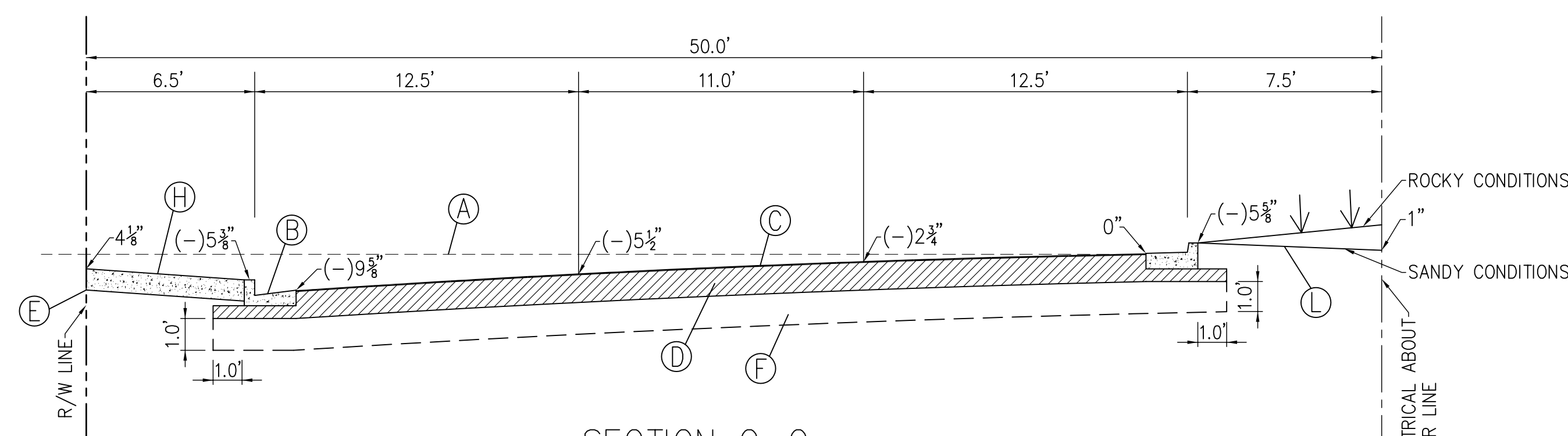


LAKE SECTION D-D
SCALE: N.T.S.

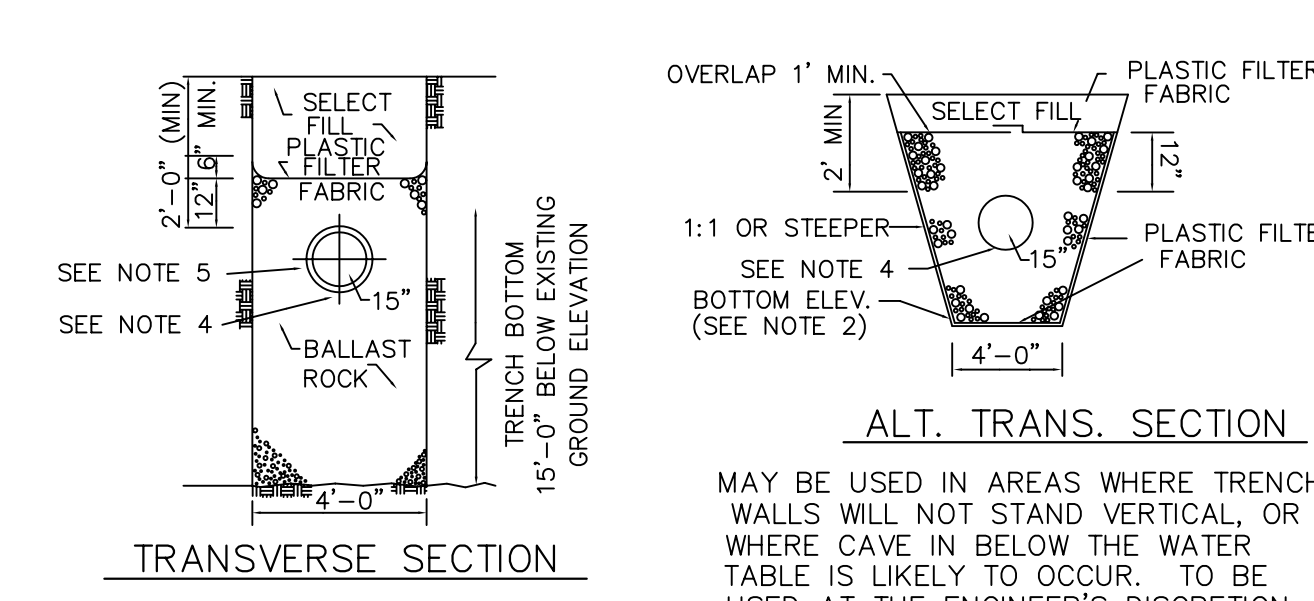
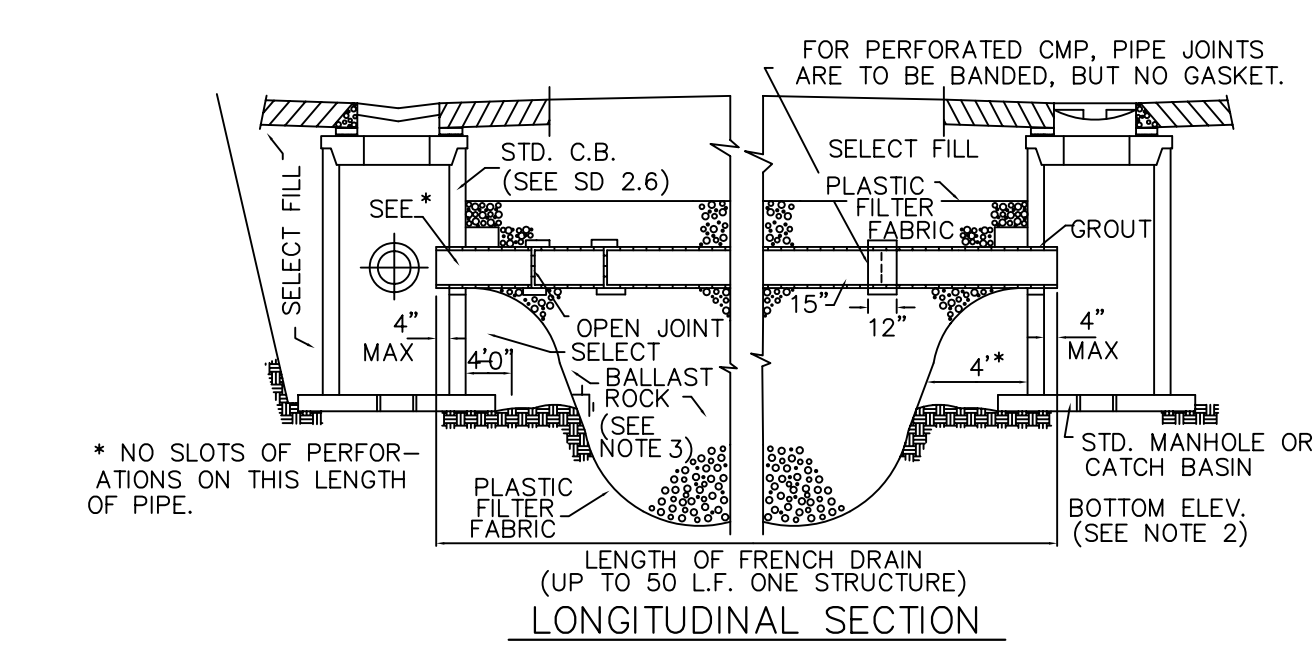
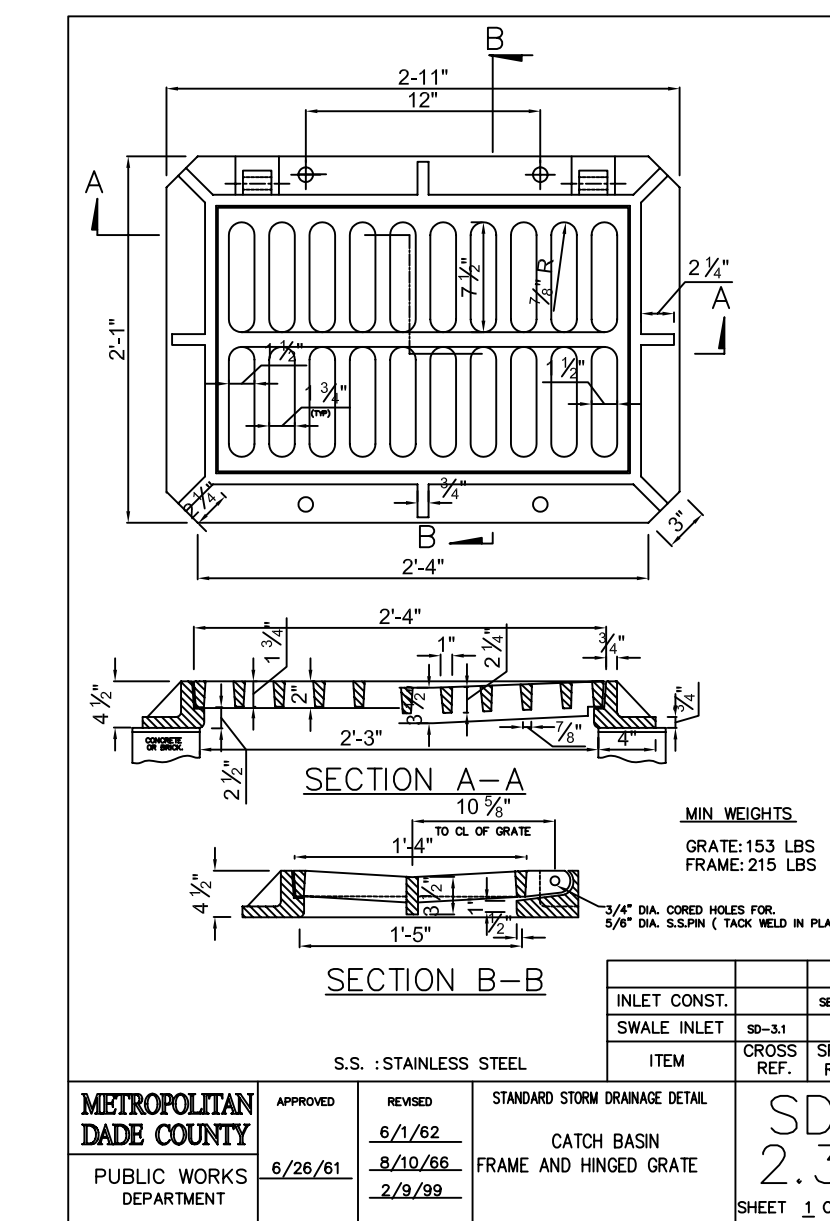


SECTION B-B
SCALE: N.T.S.

- (A) LEVEL LINE
- (B) 6" CURB & GUTTER
- (C) ASPHALTIC CONCRETE SURFACE COURSE 1" THICK
- (D) BASE COURSE 8" PRIMED ENTIRE WIDTH
- (E) RIGHT OF WAY LINE
- (F) STABILIZED SUBGRADE
- (G) SWALE (SOLID SOD)
- (H) CONCRETE SIDEWALK



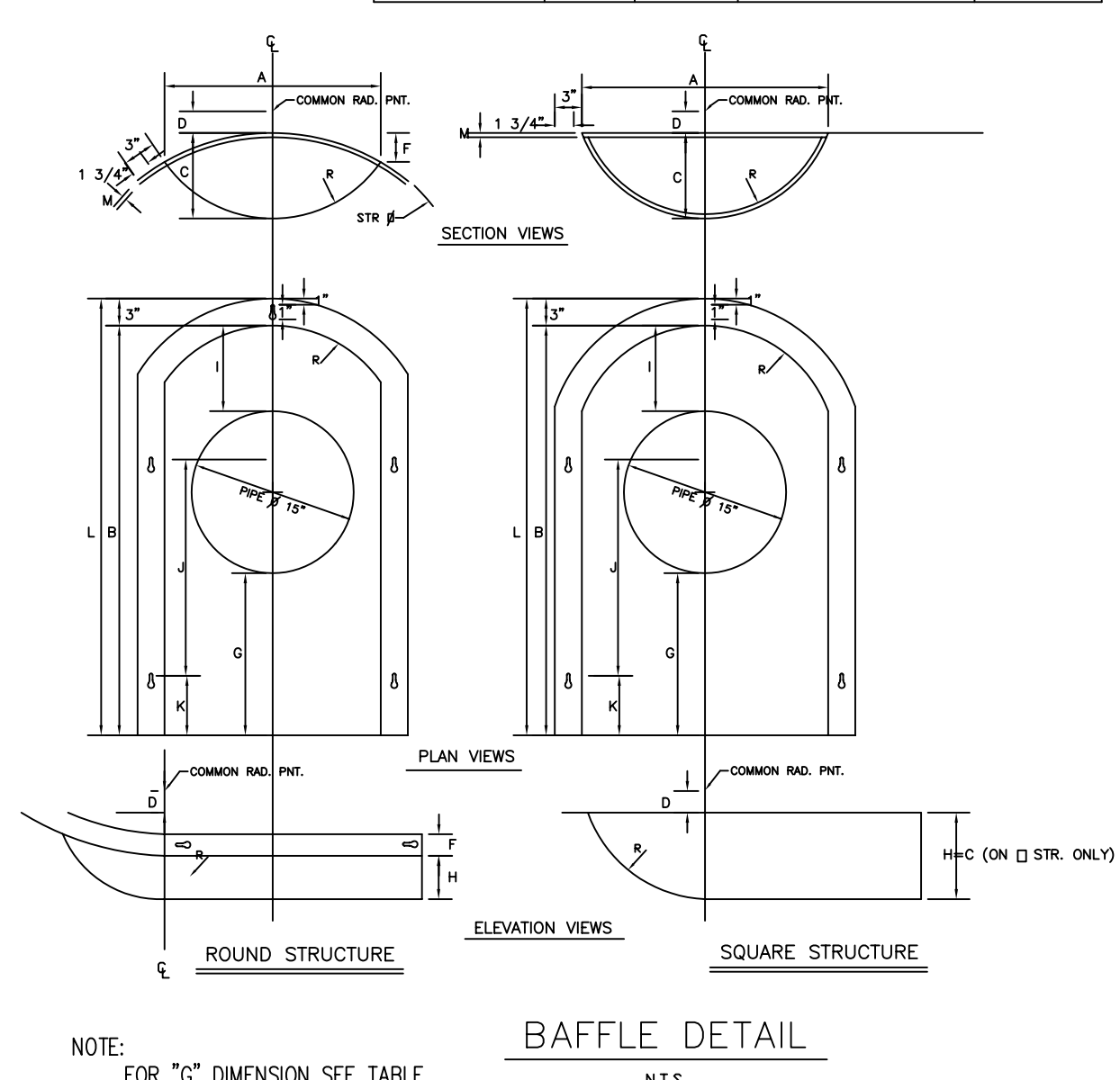
SECTION C-C
SCALE: N.T.S.



- NOTES:
- PLASTIC FILTER FABRIC (AT EA. SIDE, TOP AND BOTTOM) SHALL BE USED IN SANDY AREAS AS NOTED ON PLANS AND/OR AS DIRECTED BY THE ENGINEER
 - THE BOTTOM OF THE EXFILTRATION TRENCH SHALL BE 15'-0" BELOW EXISTING GROUND ELEVATION, UNLESS FIELD CONDITIONS WARRANT OTHERWISE.
 - AFTER THE BALLAST ROCK HAS BEEN PLACED TO THE PROPER ELEVATION, IT SHALL BE CAREFULLY WASHED DOWN WITH CLEAN WATER IN ORDER TO ALLOW FOR INITIAL SETTLEMENT THAT MAY OCCUR. IF IT DOES TAKE PLACE, ADDITIONAL BALLAST ROCK WILL BE ADDED TO RESTORE THE BALLAST ROCK TO THE PROPER ELEVATION, SO THAT THE EXFILTRATION TRENCH WILL BE COMPLETED IN ACCORDANCE WITH THE DETAILS.
 - INVERT ELEVATION TO BE 3.0 NGVD.
 - SEE SHEET 2 OF 3 OF SD 1.1 IN THE D.C.P.W. MANUAL.

EXFILTRATION TRENCH DETAIL

(SD 1.1 SHEET 1 OF 1) N.T.S.

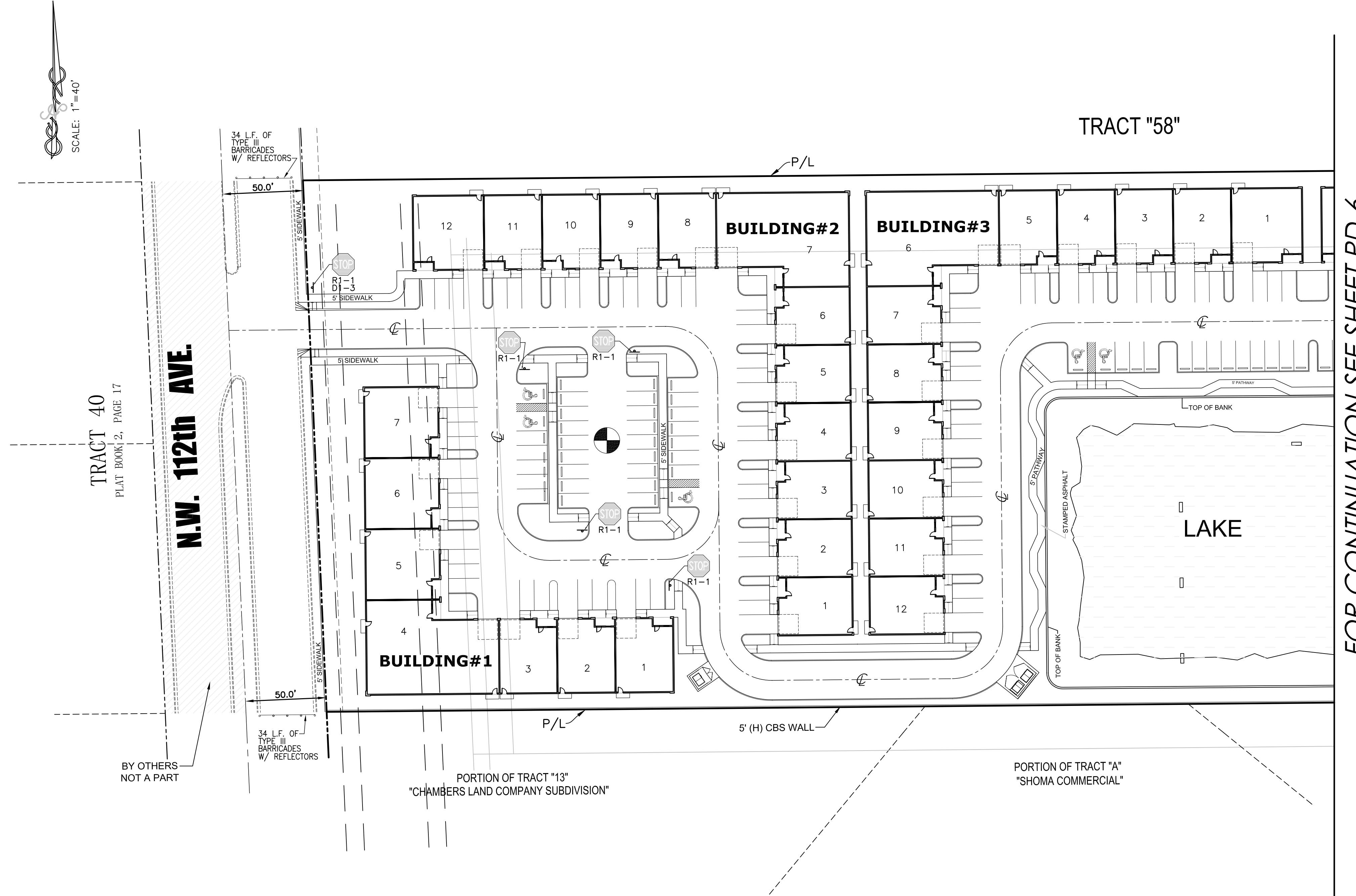


NOTE: FOR "G" DIMENSION SEE TABLE BELOW

PATH FILE: D:\2005\06-03\0609-0005\060262_P&D_11-01-06.dwg

TRAFFIC PLAN

"OKEECHOBEE CENTRE"



LEGEND:

- 50 L.F. 2-4" DOUBLE (Y)(T)(R.P.M.'S)(TYP.) W/ 24" (W)(T)
- NEW ASPHALT BY THIS PROJECT
- DENOTES EXISTING PAVEMENT & ROADWAYS

NOTE:

MARKINGS & SIGNAGE ARE FOR ON-SITE ONLY.
ALL EXISTING R-O-W'S ARE IMPROVED WITH PAVEMENT MARKINGS AND SIGNAGE, AS RECENTLY INSTALLED.

TRAFFIC GENERAL NOTES & CONDITIONS:

- 1.- Engineer shall prepare signing & pavement markings plans on a separate sheet (1"=50' scale minimum).
- 2.- Engineer shall visit site & verify field conditions before preparing proposed signing & pavement markings plans.
- 3.- Contractor shall be responsible for the removal of all pavement markings and signs conflicting with the proposed roadway construction.
- 4.- Contractor shall be responsible for the installation of all pavement markings and signs as shown in the plans and applicable traffic design standards.
- 5.- Contractor shall be responsible for matching existing pavement markings at the beginning and at the end of the project, and at all intersecting side streets.

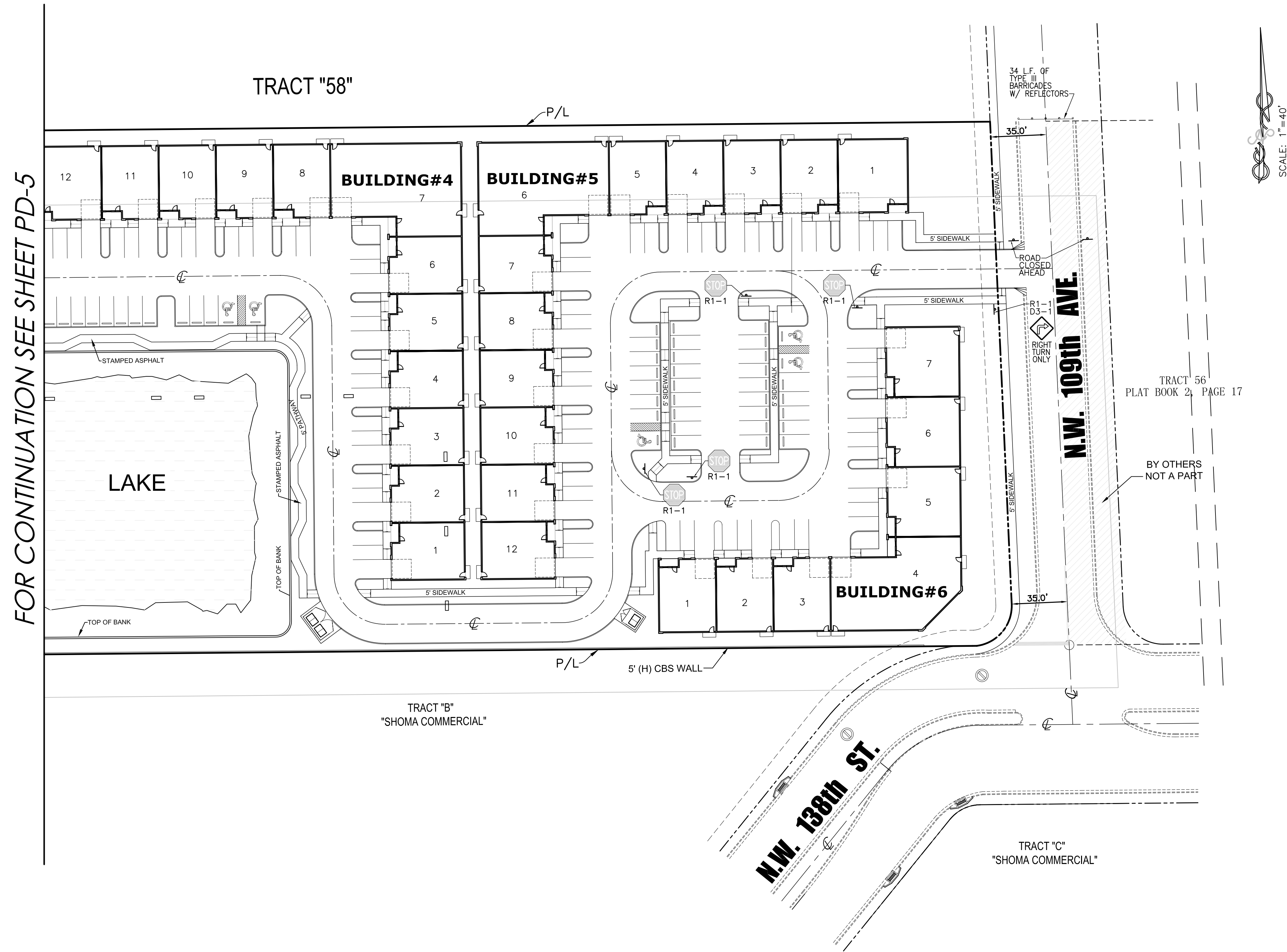
Seal

Victor Reeve P.E.
13832 SW 156 STREET
MIAMI, Florida 33177
PH: 305 378 6925
P.E.: 12324

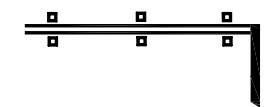
DESIGN		NO.	DATE
V. Reeve			
DRAWN			
C.M.			
DATE			
MAY, 2006			
Rodriguez Group of Florida, LLC.			
TRAFFIC PLAN			
OKEECHOBEE CENTRE			
VICINITY OF N.W. 138th ST. AND N.W. 112th AVENUE HIALEAH GARDENS - FLORIDA			
JobNo.		060262-PD	
SHEET		5 OF 6	
		PD-5	

TRAFFIC PLAN

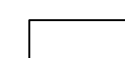
"OKEECHOBEE CENTRE"



LEGEND:



50 L.F. 2-4" DOUBLE (Y)(T)(R.P.M.'S)(TYP.)
W/ 24" (W)(T)



NEW ASPHALT BY THIS PROJECT



DENOTES EXISTING PAVEMENT & ROADWAYS

NOTE:

MARKINGS & SIGNAGE ARE FOR ON-SITE ONLY.
ALL EXISTING R-O-W'S ARE IMPROVED WITH
PAVEMENT MARKINGS AND SIGNAGE, AS RECENTLY
INSTALLED.

TRAFFIC GENERAL NOTES & CONDITIONS:

- 1.- Engineer shall prepare signing & pavement markings plans on a separate sheet (1"=50' scale minimum).
- 2.- Engineer shall visit site & verify field conditions before preparing proposed signing & pavement markings plans.
- 3.- Contractor shall be responsible for the removal of all pavement markings and signs conflicting with the proposed roadway construction.
- 4.- Contractor shall be responsible for the installation of all pavement markings and signs as shown in the plans and applicable traffic design standards.
- 5.- Contractor shall be responsible for matching existing pavement markings at the beginning and at the end of the project, and at all intersecting side streets.

Seal

Victor Reeve P.E.
13832 SW 156 STREET
MIAMI, Florida 33177
PH: 305 378 6925
P.E.: 12324

OKEECHOBEE CENTRE VICINITY OF N.W. 138th ST. AND N.W. 112th AVENUE HIALEAH GARDENS - FLORIDA	TRAFFIC PLAN	Rodriguez Group of Florida, LLC.
	JobNo. 060262-PD	DESIGN V. Reeve
	SHEET 6 OF 6 PD-6	DRAWN C.M.
	DATE MAY, 2006	REVISIONS

WATER DISTRIBUTION SYSTEM

"OKEECHOBEE CENTRE"

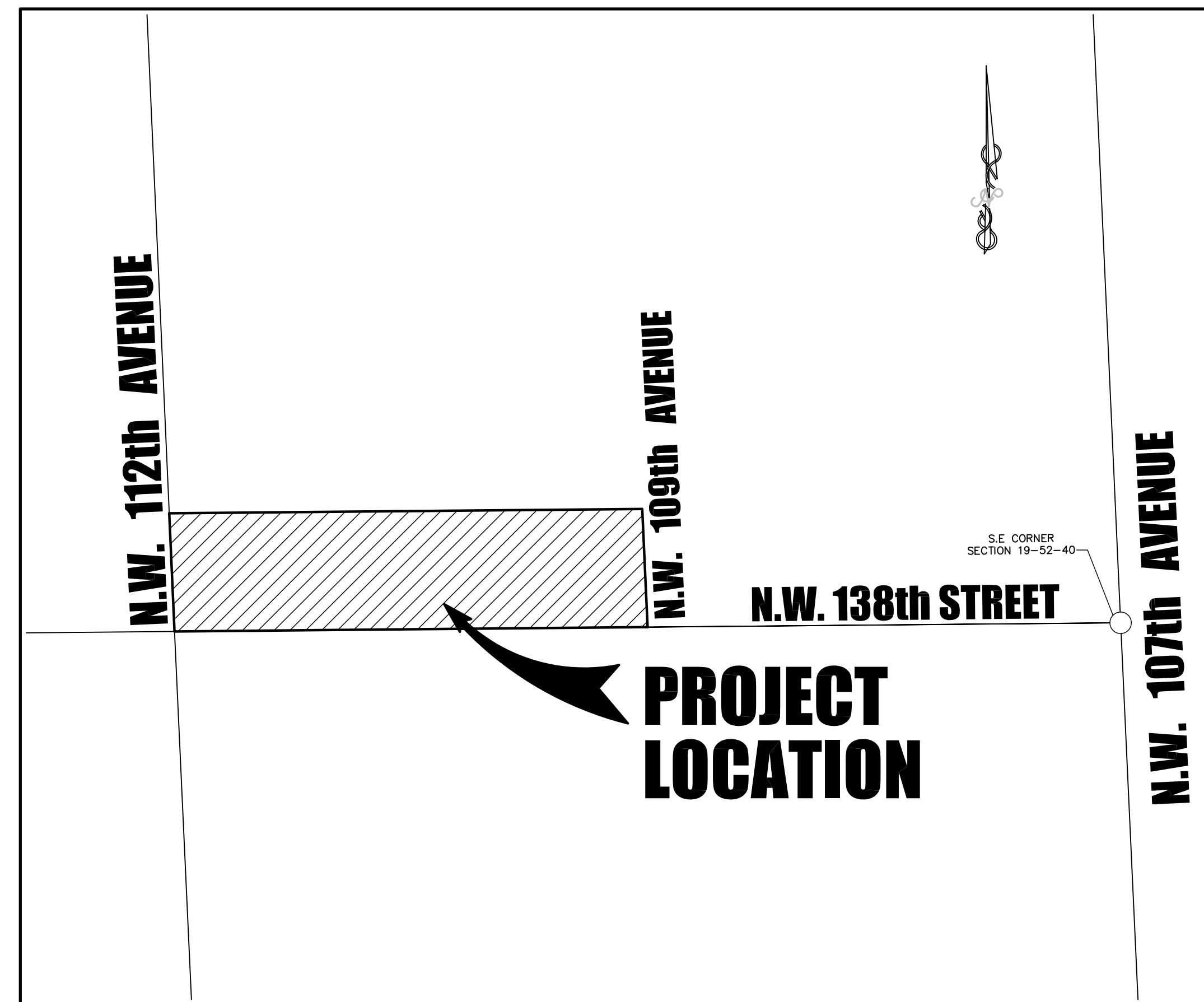
VICINITY OF N.W. 138th ST. AND N.W. 112th AVENUE
HIALEAH GARDENS - FLORIDA

INDEX OF SHEETS

SHEET W-1: WATER DISTRIBUTION COVER SHEET
SHEET W-2: WATER MAIN DISTRIBUTION PLAN
SHEET W-3: WATER MAIN DISTRIBUTION PLAN
SHEET W-4: WATER MAIN EXTENSION PROFILES

LEGEND :

	EXISTING	PROPOSED
Power Pole		
Telephone Pole		
Combination Pole		
Guy Wire And Anchor Pin		
Light Pole		
Gas Main		
Water Main		
Sanitary Sewer		
Storm Sewer (C.M.P.)		
French Drain		
Pavement		
Curb Inlet (1)		
Curb Inlet (2)		
Catch Basin (3)		
Drainage Flow		
Grade		
Curb		
Curb And Gutter		
Manhole		
Structure Number		
Sewer Lateral		
Fire Hydrant		
Tee		
Gate Valve		
Reducer		
Bends, (90°, 45°, 22-1/2°, 11-1/4°)		
Cross		
Double Service		
Single Service		
Plug & Flush Valve Outlet		
Fitting Number		
Sewage Flow Direction		



LOCATION MAP
A PORTION OF THE SE 1/4 OF SECTION 19, TOWNSHIP 52 SOUTH, RANGE 40 EAST
MIAMI-DADE COUNTY, FLORIDA.
SCALE = 1" : 300'

THE FOLLOWING ARE REQUIREMENTS PER DEPARTMENT OF HEALTH

- STORM DRAINAGE LINES ARE TREATED THE SAME AS SANITARY SEWER LINES. EXFILTRATION DRAINAGE TRENCHES ARE EXEMPTED.
- MINIMUM 10 FEET HORIZONTAL SEPARATION BETWEEN WATERMAINS AND SEWER LINES IS REQUIRED. IF UNABLE TO MAINTAIN MINIMUM SEPARATION HORIZONTALLY, EACH PIPE SHALL BE SHELVED WITH MINIMUM 18 INCHES VERTICAL SEPARATION.
- FORCE MAIN MUST HAVE AN 18 INCH VERTICAL SEPARATION FROM WATER LINES. NO EXCEPTIONS.
- SEWER LINES, INCLUDING LATERALS, MUST HAVE 18 INCH VERTICAL CLEARANCE BETWEEN WATERMAINS AND/OR 6 INCHES MINIMUM CLEARANCE IF SEWER LINE IS D.I.P. STORM DRAINAGE LINES ARE EXEMPT IF D.I.P. WATER MAIN SEPARATION OF 6" IS MAINTAINED AND BOTH PIPES HAVE NO JOINTS WITHIN 10 FEET OF EACH OTHER.

GENERAL NOTES

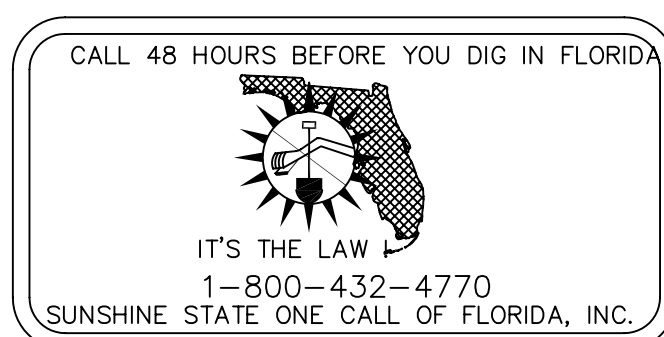
STANDARD REQUIREMENTS WATER & SEWER CONSTRUCTION

- ALL MATERIALS AND LABOR UNDER THIS PROJECT SHALL BE IN STRICT ACCORDANCE WITH THE REQUIREMENTS OF THE CITY OF HIALEAH GARDENS WATER & SEWER DEPARTMENT AND SHALL CONFORM TO THE STANDARDS AND SPECIFICATIONS AVAILABLE AND ON FILE WITH THE DEPARTMENT. SUBMIT SHOP DRAWINGS FOR ALL MATERIALS.
- COVER OVER WATER OR SEWER FORCE MAINS SHALL BE 4'-0".
- ALL MAIN LINE VALVES SHALL BE INSTALLED COMPLETE WITH 10" RISER PIPES AND NO. 3 OR 53 VALVE BOXES. FIRE HYDRANTS AND SERVICE VALVES SHALL BE INSTALLED COMPLETE WITH 6" RISER PIPES AND NO. 2 VALVE BOXES.
- ALL FORCE MAIN SERVICE CONNECTIONS INTO PRESSURE TRANSMISSION MAINS SHALL HAVE A SHUT OFF VALVE AND CHECK VALVE AT THE POINT OF ENTRY.
- ALL GRAVITY SYSTEMS SHALL BE CONSTRUCTED IN ACCORDANCE WITH DEPARTMENT STANDARDS.
- ALL WATER METERS WILL BE INSTALLED BY THE CITY OF HIALEAH GARDENS WATER AND SEWER DEPARTMENT PROVIDING THE APPROPRIATE CHARGES HAVE BEEN PREPAID.
- FIRE HYDRANT REQUIREMENTS (NUMBER AND LOCATION) SHALL BE AS REQUIRED BY DADE COUNTY FIRE DEPARTMENT OR THE APPROPRIATE FIRE AGENCY WITH INSTALLATION IN ACCORDANCE WITH DEPARTMENT STANDARDS.
- CONTRACTOR MUST CALL CITY INSPECTION DIVISION TO ARRANGE FOR A PRE-CONSTRUCTION MEETING 48 HOURS PRIOR TO PROPOSED START OF CONSTRUCTION.
- DEPARTMENT PERSONNEL WILL INSPECT ALL FACILITIES APPROVED BY THIS DEPARTMENT. ALL OTHER REQUIREMENTS OF THE PERMITTING AGENCY SHALL BE IN ACCORDANCE WITH THEIR STANDARDS AND REQUIREMENTS.
- WORK PERFORMED UNDER THIS PROJECT WILL NOT BE CONSIDERED AS COMPLETE UNTIL FINAL ACCEPTANCE OF THE SYSTEM BY THE DEPARTMENT AND UNTIL THE FOLLOWING DOCUMENTS ARE RECEIVED AND APPROVED BY THE DEPARTMENT.
 - EASEMENTS, IF REQUIRED
 - CONTRACTOR'S WAIVER AND RELEASE OF LIEN
 - ABSOLUTE BILL OF SALE
 - CONTRACTOR'S LETTER OF WARRANTY (I.E., LETTER AGREEMENT)
 - DEVELOPER'S CONTRACT BOND (I.E., CONTRACT AGREEMENT)
 - "AS-BUILT" 4 MIL MYLAR 24"x36" SHOWING SPECIFIC LOCATIONS, DEPTHS, ETC., OF ALL WATER FACILITIES AS LOCATED BY A LICENSED SURVEYOR, ALONG WITH TWO (2) PRINTS OF THE "AS-BUILT" WHICH HAVE BEEN SIGNED AND SEALED BY A REGISTERED SURVEYOR OR ENGINEER OF RECORD, AND ENDORSED BY THE CONTRACTOR.
- ALL NEW CONNECTIONS FROM EXISTING DEPARTMENT MAINS TO BE MADE BY DEPARTMENT FORCES ONLY. THE CONTRACTOR TO EXCAVATE AT REQUIRED LOCATIONS, PROVIDE AND INSTALL MATERIAL WITH FITTINGS, PRIOR TO TAP.
- AN APPROVED PAVING AND DRAINAGE PLAN MUST BE SUBMITTED FOR ALL NEW SUBDIVISIONS PRIOR TO APPROVAL OF WATER AND SEWER PERMIT PLANS, UPON REQUEST.
- UNLESS OTHERWISE SPECIFIED, ALL TAPS 20 INCHES AND SMALLER FOR CONNECTIONS TO EXISTING MAINS WITH A TAPPING SLEEVE AND TAPPING VALVE WILL BE PERFORMED BY DEPARTMENT FORCES. UNDER NO CIRCUMSTANCES WILL THE CONTRACTOR BE PERMITTED TO TAP EXISTING MAINS IN THE SIZE RANGE SPECIFIED ABOVE.

WATER & SEWER INSTALLATION NOTES:

- A HORIZONTAL DISTANCE OF 10 FT. SHALL BE MAINTAINED BETWEEN WATER & SEWER MAINS. WHEN THE 10 FEET HORIZONTAL DISTANCE CRITERIA CANNOT BE MET DUE TO AN EXISTING UNDERGROUND FACILITY CONFLICT, THE SEWER SHALL BE CONSTRUCTED OF DUCTILE IRON PIPE WITH MECHANICAL JOINTS.
- A VERTICAL DISTANCE OF AT LEAST 18 INCHES SHALL BE MAINTAINED BETWEEN ANY WATER AND SEWER MAINS. THE SEWER SHALL BE A DUCTILE IRON SINGLE 20 FEET LENGTH CENTERED ON THE CROSSING IF THE MINIMUM VERTICAL DISTANCE IS LESS THAN 18 INCHES OR THE SEWER IS INSTALLED ABOVE THE WATER MAIN (REGARDLESS OF SEPARATION).
- IN HIGHLY CONGESTED AREAS, WHERE EITHER WATER OR SEWER FACILITIES ARE EXISTING AND THE SEPARATION REQUIREMENTS CANNOT BE MET, SPECIAL CONSIDERATION MAY BE GIVEN SUBJECT TO A COMPLETE EVALUATION OF EXISTING AND PROPOSED CONDITIONS.
- THE MAXIMUM ALLOWABLE EXFILTRATION RATE OF GRAVITY SANITARY SEWERS CONSTRUCTED IN A PUBLIC WELLFIELD PROTECTION AREA SHALL BE FIFTY (50) GALLONS PER INCH PIPE DIAMETER PER MILE PER DAY FOR RESIDENTIAL LAND USE AND TWENTY (20) GALLONS PER INCH PIPE DIAMETER PER MILE PER DAY FOR NON-RESIDENTIAL LAND USE.
- FORCE MAIN SEWERS CONSTRUCTED IN A PUBLIC WELLFIELD PROTECTION AREA SHALL BE EITHER DUCTILE IRON OR REINFORCED CONCRETE PRESSURE SEWER PIPE. THE DUCTILE IRON PIPE EXFILTRATION RATE SHALL NOT BE GREATER THAN THE ALLOWABLE LEAKAGE RATE SPECIFIED IN AMERICAN WATER WORKS ASSOCIATION STANDARD (AWWAS) C600-82 AT A TEST PRESSURE OF 100 POUNDS PER SQUARE INCH. THE REINFORCED CONCRETE PRESSURE SANITARY SEWER FORCE MAIN EXFILTRATION RATE SHALL NOT BE GREATER THAN ONE HALF (1/2) THE ALLOWABLE LEAKAGE RATE SPECIFIED IN AWWA C600-82 AT A TEST PRESSURE OF 100 POUNDS PER SQUARE INCH.
- THE CONTRACTOR SHALL VERIFY NATURE, DEPTH, AND CHARACTER OF EXISTING UNDERGROUND UTILITIES PRIOR TO START OF CONSTRUCTION.
- ALL OTHER PUBLIC OR PRIVATE UTILITY FACILITIES SHALL BE CONSTRUCTED AT LEAST 3 FEET FROM ANY WATER AND SEWER MAIN AS MEASURED FROM THE OUTSIDE BELL OF THE WATER AND SEWER PIPE TO THE OUTSIDE OF THE UTILITY PIPE.
- WHEN THE 3 FEET SEPARATION BETWEEN PROPOSED AND EXISTING LINE IS NOT POSSIBLE, THE CONTRACTOR SHALL HAND DIG OR EXPOSE THE WATER AND SEWER PIPES BEFORE PROCEEDING WITH POWER EQUIPMENT EXCAVATION.
- IN NO CASE SHALL A CONTRACTOR INSTALL UTILITY PIPES, CONDUITS, CABLES, ETC., IN THE SAME TRENCH PARALLEL TO AND ABOVE EXISTING WATER AND SEWER PIPES, EXCEPT WHERE THEY CROSS. ANY DEVIATION FROM NOTES 6, 7 AND 8 SHALL BE APPROVED IN WRITING BY THE RESPONSIBLE WATER AND SEWER UTILITY.
- A NON-RESETTING ELAPSE TIME METER SHALL BE INSTALLED AT EACH PUMP TO RECORD THE TOTAL OPERATING HOURS OF THE STATION.
- PAVEMENT RESTORATION SHALL BE IN ACCORDANCE WITH DADE COUNTY PUBLIC WORKS MANUAL STANDARD DETAIL NO. R21.1.

Seal

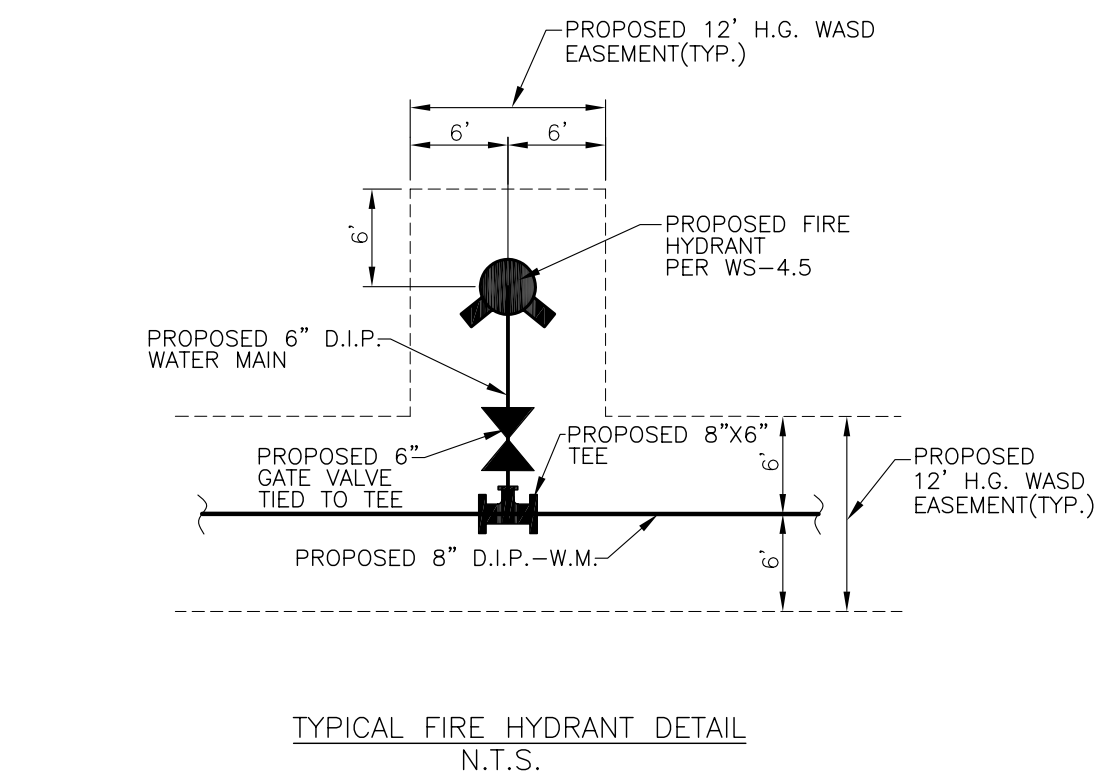
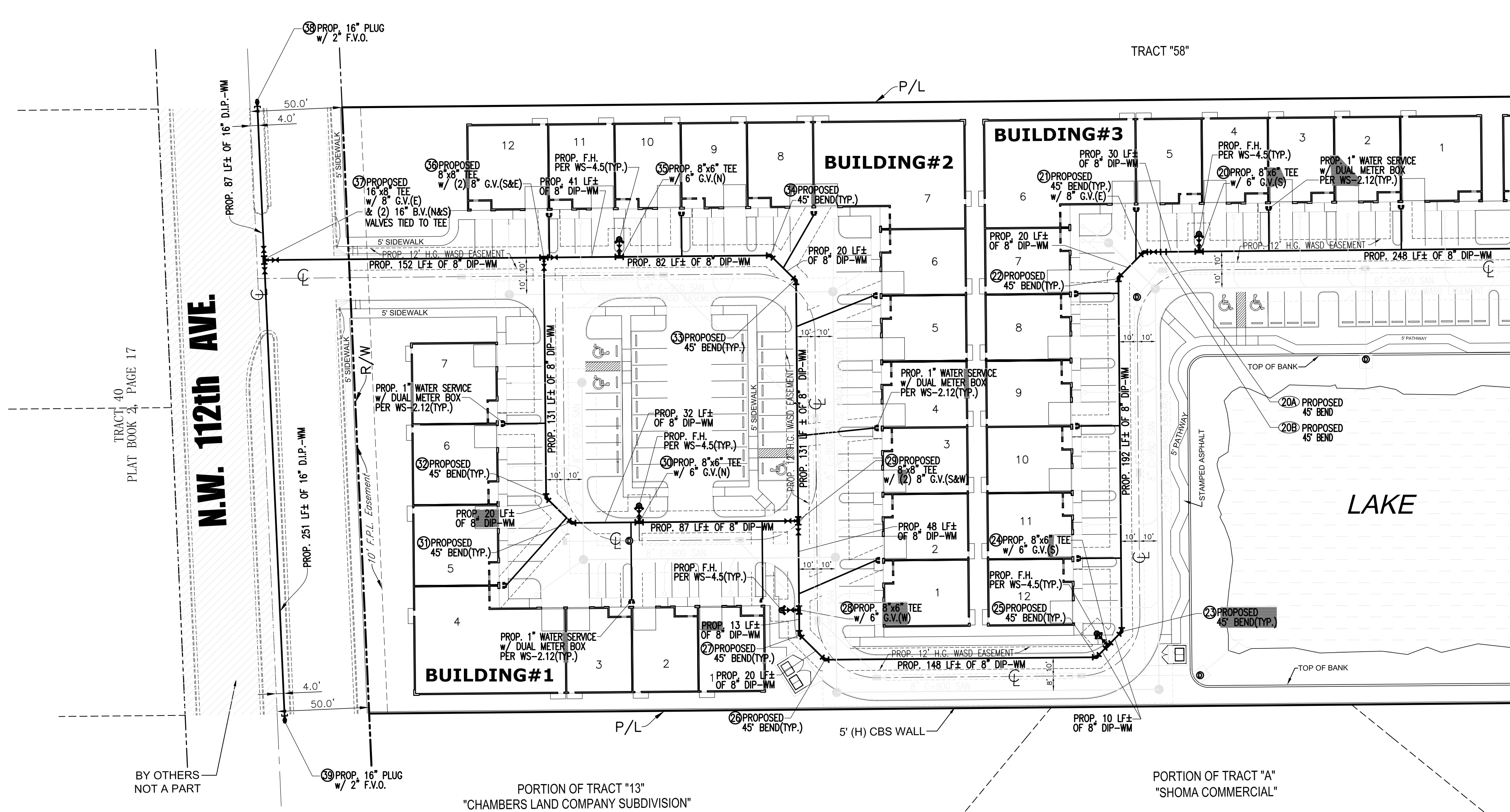
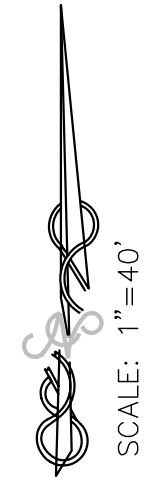


Victor Reeve P.E.
13832 SW 156 STREET
MIAMI, Florida 33177
PH: 305 378 6925
P.E.: 12324

DESIGN	NO.	DATE
V. Reeve	1	7-11-06
DRAWN		
EC		
DATE		
NOV. 2006		
REVISIONS		
GENERAL REVISION		
Rodriguez Group of Florida, LLC.		
COVER SHEET		
OKEECHOBEE CENTRE		
VICINITY OF N.W. 138th ST. AND N.W. 112th AVENUE HIALEAH GARDENS - FLORIDA		
JobNo.	060262-W	
	SHEET 1 OF 4	
	W-1	

WATER DISTRIBUTION SYSTEM

"OKEECHOBEE CENTRE"



FOR CONTINUATION SEE SHEET W-3

PATH: FILE: D:\2006\06-09\0609-0005\060262 Fwd 11-01-06\060262 Water 06-21-06.dwg

DESIGN V. Reeve 1	NO.	DATE
	REVISIONS GENERAL REVISION	7-11-06
DRAWN EC	NO.	DATE
NOV. 2006		
Rodriguez Group of Florida, LLC.		
WATER DISTRIBUTION PLAN		
OKEECHOBEE CENTRE		
VICINITY OF N.W. 138th ST. AND N.W. 112th AVENUE HIALEAH GARDENS - FLORIDA		
JobNo.	060262-W	
	SHEET 2 OF 4	
	W-2	

Seal
Victor Reeve P.E.
13832 SW 156 STREET
MIAMI, Florida 33177
PH: 305 378 6925
P.E.: 12324

PROFILES

SCALE: 1"=40' (HORIZONTAL)
1"=4' (VERTICAL)

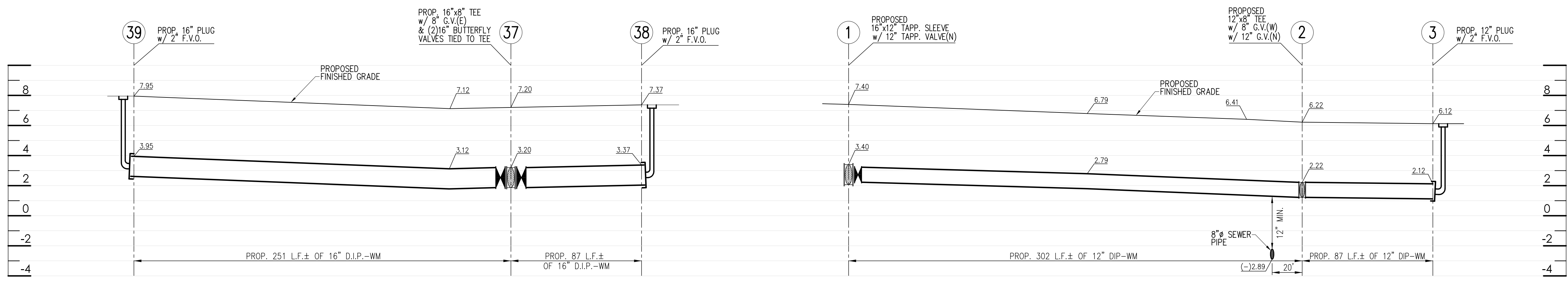
NO.	DATE	REVISIONS
1	7-11-06	GENERAL REVISION
2		
3		
4		
5		
6		
7		
8		
9		
10		
11		
12		
13		
14		
15		
16		
17		
18		
19		
20		
21		
22		
23		
24		
25		
26		
27		
28		
29		
30		
31		
32		
33		
34		
35		
36		
37		
38		
39		
20A		
20B		

Rodriguez Group of Florida, LLC.

WATER PROFILES

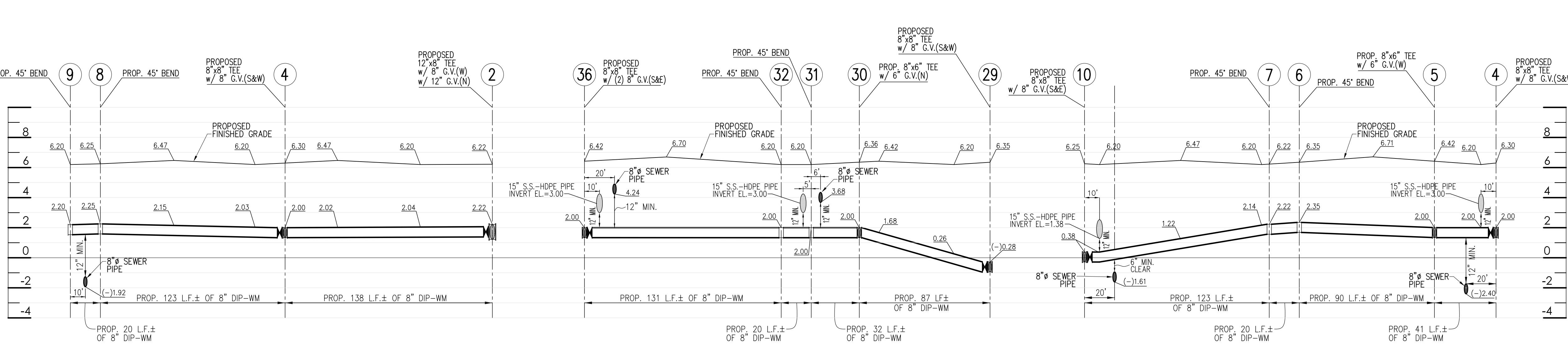
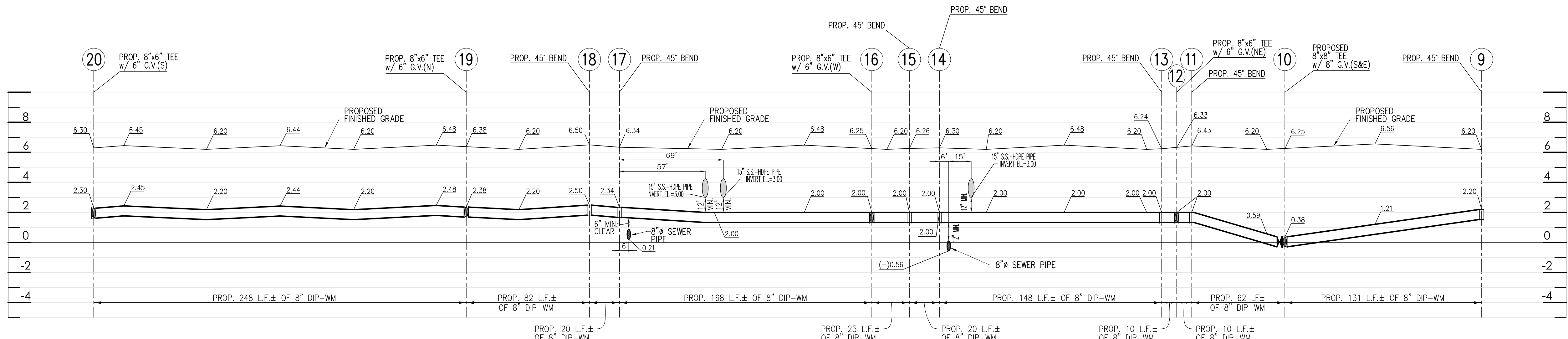
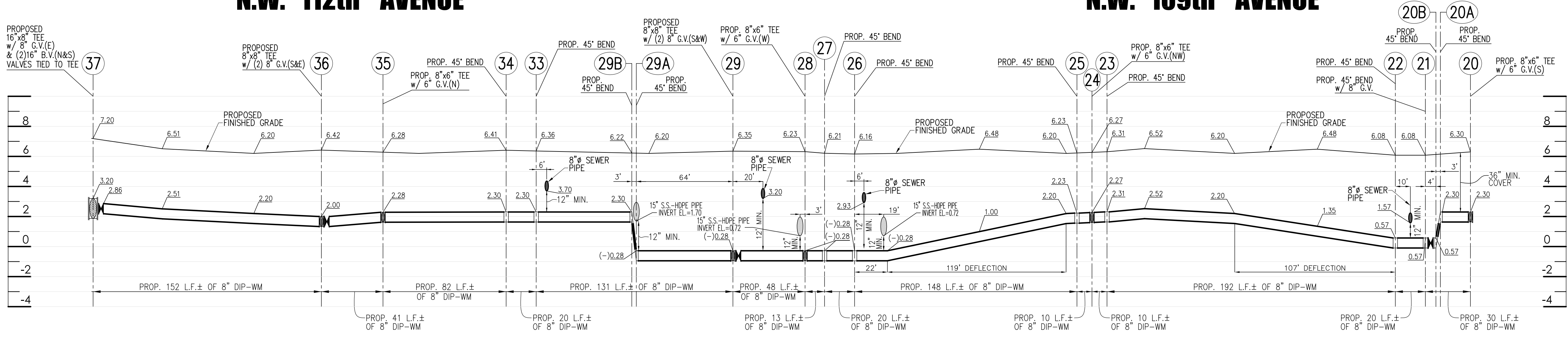
OKEECHOBEE CENTRE
VICINITY OF N.W. 138th ST. AND N.W. 112th AVENUE
HIALEAH GARDENS - FLORIDA

Job No. 060262-W
SHEET 4 OF 4
W-4



N.W. 112th AVENUE

N.W. 109th AVENUE



Seal

Victor Reeve P.E.
13832 SW 156 STREET
MIAMI, Florida 33177
PH: 305 378 6925
P.E.: 12324

PATH FILE: D:\2006\06-09\0005\060262 Fixed 11-01-06\060262 Water 06-21-06.dwg

SEWER COLLECTION SYSTEM

"OKEECHOBEE CENTRE"

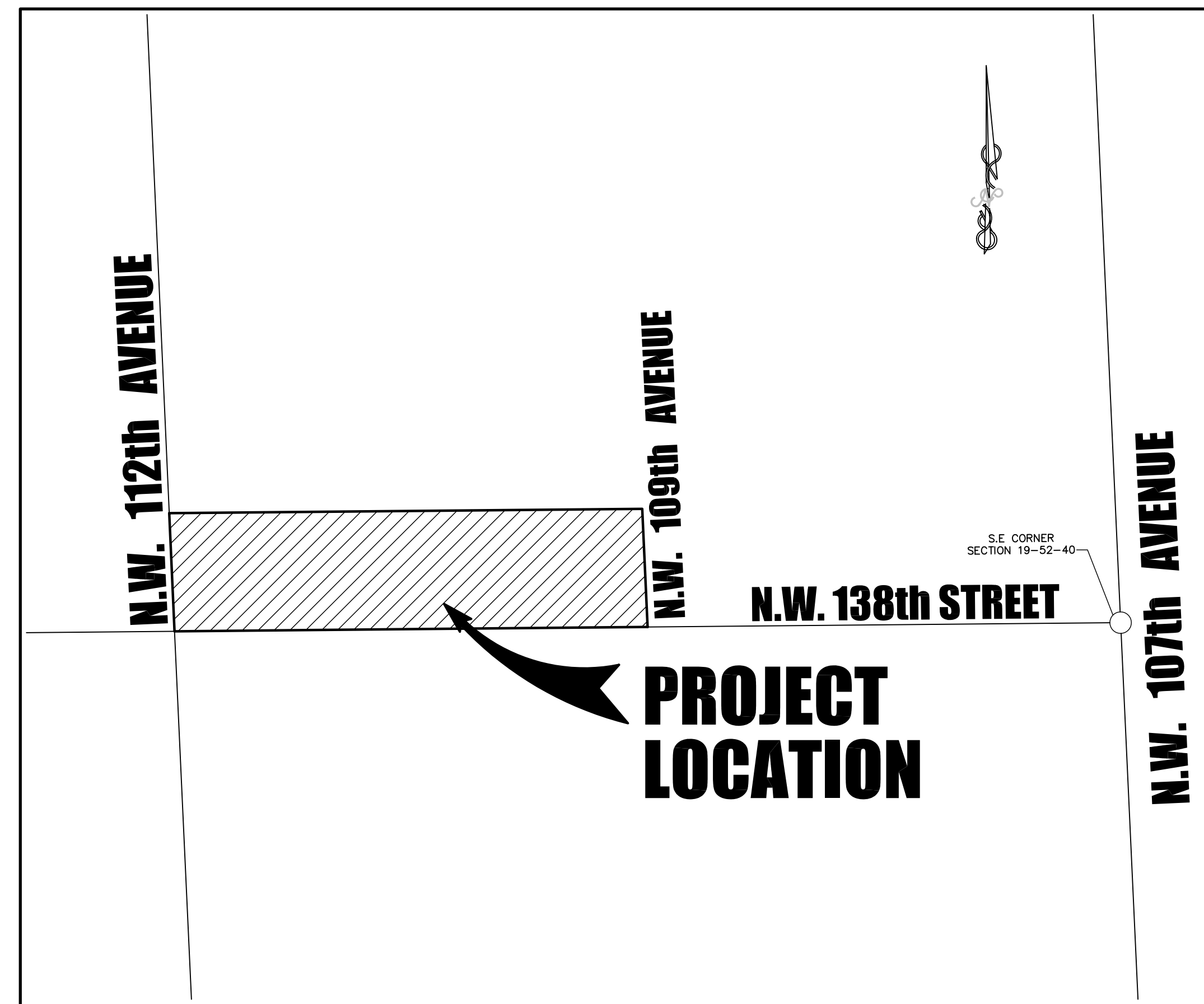
VICINITY OF N.W. 138th ST. AND N.W. 112th AVENUE
HIALEAH GARDENS - FLORIDA

INDEX OF SHEETS

- SHEET S-1: SEWER COLLECTION COVER SHEET
- SHEET S-2: SEWER COLLECTION PLAN
- SHEET S-3: SEWER COLLECTION PLAN
- SHEET S-4: SEWER COLLECTION PROFILES
- SHEET S-5: SEWER COLLECTION PROFILES

LEGEND :

	EXISTING	PROPOSED
Power Pole		
Telephone Pole		
Combination Pole		
Guy Wire And Anchor Pin		
Light Pole		
Gas Main		
Water Main		
Sanitary Sewer		
Storm Sewer (C.M.P.)		
French Drain		
Pavement		
Curb Inlet (1)		
Curb Inlet (2)		
Catch Basin (3)		
Drainage Flow		
Grade		
Curb		
Curb And Gutter		
Manhole		
Structure Number		
Sewer Lateral		
Fire Hydrant		
Tee		
Gate Valve		
Reducer		
Bends, (90°, 45°, 22-1/2°, 11-1/4°)		
Cross		
Double Service		
Single Service		
Plug & Flush Valve Outlet		
Fitting Number		
Sewage Flow Direction		



LOCATION MAP
A PORTION OF THE SE 1/4 OF SECTION 19, TOWNSHIP 52 SOUTH, RANGE 40 EAST
MIAMI-DADE COUNTY, FLORIDA.
SCALE = 1" : 300'

GENERAL NOTES

STANDARD REQUIREMENTS WATER & SEWER CONSTRUCTION

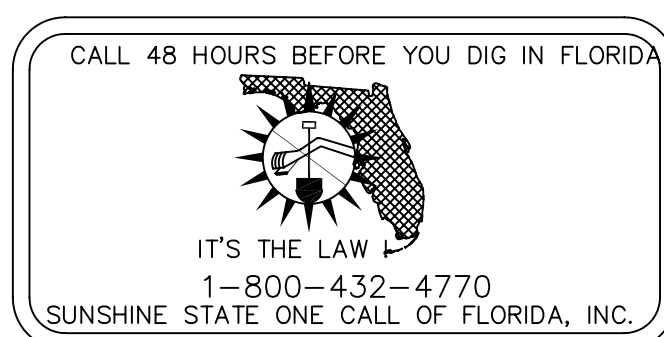
1. ALL MATERIALS AND LABOR UNDER THIS PROJECT SHALL BE IN STRICT ACCORDANCE WITH THE REQUIREMENTS OF THE CITY OF HIALEAH GARDENS WATER & SEWER DEPARTMENT AND SHALL CONFORM TO THE STANDARDS AND SPECIFICATIONS AVAILABLE AND ON FILE WITH THE DEPARTMENT. SUBMIT SHOP DRAWINGS FOR ALL MATERIALS.
2. COVER OVER WATER OR SEWER FORCE MAINS SHALL BE 4'-0".
3. ALL MAIN LINE VALVES SHALL BE INSTALLED COMPLETE WITH 10" RISER PIPES AND NO. 3 OR 53 VALVE BOXES. FIRE HYDRANTS AND SERVICE VALVES SHALL BE INSTALLED COMPLETE WITH 6" RISER PIPES AND NO. 2 VALVE BOXES.
4. ALL FORCE MAIN SERVICE CONNECTIONS INTO PRESSURE TRANSMISSION MAINS SHALL HAVE A SHUT OFF VALVE AND CHECK VALVE AT THE POINT OF ENTRY.
5. ALL GRAVITY SYSTEMS SHALL BE CONSTRUCTED IN ACCORDANCE WITH DEPARTMENT STANDARDS.
6. ALL WATER METERS WILL BE INSTALLED BY THE CITY OF HIALEAH GARDENS WATER AND SEWER DEPARTMENT PROVIDING THE APPROPRIATE CHARGES HAVE BEEN PREPAID.
7. FIRE HYDRANT REQUIREMENTS (NUMBER AND LOCATION) SHALL BE AS REQUIRED BY DADE COUNTY FIRE DEPARTMENT OR THE APPROPRIATE FIRE AGENCY WITH INSTALLATION IN ACCORDANCE WITH DEPARTMENT STANDARDS.
8. CONTRACTOR MUST CALL CITY INSPECTION DIVISION TO ARRANGE FOR A PRE-CONSTRUCTION MEETING 48 HOURS PRIOR TO PROPOSED START OF CONSTRUCTION.
9. DEPARTMENT PERSONNEL WILL INSPECT ALL FACILITIES APPROVED BY THIS DEPARTMENT. ALL OTHER REQUIREMENTS OF THE PERMITTING AGENCY SHALL BE IN ACCORDANCE WITH THEIR STANDARDS AND REQUIREMENTS.
10. WORK PERFORMED UNDER THIS PROJECT WILL NOT BE CONSIDERED AS COMPLETE UNTIL FINAL ACCEPTANCE OF THE SYSTEM BY THE DEPARTMENT AND UNTIL THE FOLLOWING DOCUMENTS ARE RECEIVED AND APPROVED BY THE DEPARTMENT.
 1. EASEMENTS, IF REQUIRED
 2. CONTRACTOR'S WAIVER AND RELEASE OF LIEN
 3. ABSOLUTE BILL OF SALE
 - 4 a. CONTRACTOR'S LETTER OF WARRANTY (I.E., LETTER AGREEMENT)
 - b. DEVELOPER'S CONTRACT BOND (I.E., CONTRACT AGREEMENT)
 5. "AS-BUILT" 4 MIL MYLAR 24"x36" SHOWING SPECIFIC LOCATIONS, DEPTHS, ETC., OF ALL WATER FACILITIES AS LOCATED BY A LICENSED SURVEYOR, ALONG WITH TWO (2) PRINTS OF THE "AS-BUILT" WHICH HAVE BEEN SIGNED AND SEALED BY A REGISTERED SURVEYOR OR ENGINEER OF RECORD, AND ENDORSED BY THE CONTRACTOR.

11. ALL NEW CONNECTIONS FROM EXISTING DEPARTMENT MAINS TO BE MADE BY DEPARTMENT FORCES ONLY. THE CONTRACTOR TO EXCAVATE AT REQUIRED LOCATIONS, PROVIDE AND INSTALL MATERIAL WITH FITTINGS, PRIOR TO TAP.
12. AN APPROVED PAVING AND DRAINAGE PLAN MUST BE SUBMITTED FOR ALL NEW SUBDIVISIONS PRIOR TO APPROVAL OF WATER AND SEWER PERMIT PLANS, UPON REQUEST.
13. UNLESS OTHERWISE SPECIFIED, ALL TAPS 20 INCHES AND SMALLER FOR CONNECTIONS TO EXISTING MAINS WITH A TAPPING SLEEVE AND TAPPING VALVE WILL BE PERFORMED BY DEPARTMENT FORCES. UNDER NO CIRCUMSTANCES WILL THE CONTRACTOR BE PERMITTED TO TAP EXISTING MAINS IN THE SIZE RANGE SPECIFIED ABOVE.

WATER & SEWER INSTALLATION NOTES:

1. A HORIZONTAL DISTANCE OF 10 FT. SHALL BE MAINTAINED BETWEEN WATER & SEWER MAINS. WHEN THE 10 FEET HORIZONTAL DISTANCE CRITERIA CANNOT BE MET DUE TO AN EXISTING UNDERGROUND FACILITY CONFLICT, THE SEWER SHALL BE CONSTRUCTED OF DUCTILE IRON PIPE WITH MECHANICAL JOINTS.
2. A VERTICAL DISTANCE OF AT LEAST 18 INCHES SHALL BE MAINTAINED BETWEEN ANY WATER AND SEWER MAINS. THE SEWER SHALL BE A DUCTILE IRON SINGLE 20 FEET LENGTH CENTERED ON THE CROSSING IF THE MINIMUM VERTICAL DISTANCE IS LESS THAN 18 INCHES OR THE SEWER IS INSTALLED ABOVE THE WATER MAIN (REGARDLESS OF SEPARATION).
3. IN HIGHLY CONGESTED AREAS, WHERE EITHER WATER OR SEWER FACILITIES ARE EXISTING AND THE SEPARATION REQUIREMENTS CANNOT BE MET, SPECIAL CONSIDERATION MAY BE GIVEN SUBJECT TO A COMPLETE EVALUATION OF EXISTING AND PROPOSED CONDITIONS.
4. THE MAXIMUM ALLOWABLE INFILTRATION RATE OF GRAVITY SANITARY SEWERS CONSTRUCTED IN A PUBLIC WELLFIELD PROTECTION AREA SHALL BE FIFTY (50) GALLONS PER INCH PIPE DIAMETER PER MILE PER DAY FOR RESIDENTIAL LAND USE AND TWENTY (20) GALLONS PER INCH PIPE DIAMETER PER MILE PER DAY FOR NON-RESIDENTIAL LAND USE.
5. FORCE MAIN SEWERS CONSTRUCTED IN A PUBLIC WELLFIELD PROTECTION AREA SHALL BE EITHER DUCTILE IRON OR REINFORCED CONCRETE PRESSURE SEWER PIPE. THE DUCTILE IRON PIPE INFILTRATION RATE SHALL NOT BE GREATER THAN THE ALLOWABLE LEAKAGE RATE SPECIFIED IN AMERICAN WATER WORKS ASSOCIATION STANDARD (AWWAS) C600-82 AT A TEST PRESSURE OF 100 POUNDS PER SQUARE INCH. THE REINFORCED CONCRETE PRESSURE SANITARY SEWER FORCE MAIN INFILTRATION RATE SHALL NOT BE GREATER THAN ONE HALF (1/2) THE ALLOWABLE LEAKAGE RATE SPECIFIED IN AWWA C600-82 AT A TEST PRESSURE OF 100 POUNDS PER SQUARE INCH.
6. THE CONTRACTOR SHALL VERIFY NATURE, DEPTH, AND CHARACTER OF EXISTING UNDERGROUND UTILITIES PRIOR TO START OF CONSTRUCTION.
7. ALL OTHER PUBLIC OR PRIVATE UTILITY FACILITIES SHALL BE CONSTRUCTED AT LEAST 3 FEET FROM ANY WATER AND SEWER MAIN AS MEASURED FROM THE OUTSIDE BELL OF THE WATER AND SEWER PIPE TO THE OUTSIDE OF THE UTILITY PIPE.
8. WHEN THE 3 FEET SEPARATION BETWEEN PROPOSED AND EXISTING LINE IS NOT POSSIBLE, THE CONTRACTOR SHALL HAND DIG OR EXPOSE THE WATER AND SEWER PIPES BEFORE PROCEEDING WITH POWER EQUIPMENT EXCAVATION.
9. IN NO CASE SHALL A CONTRACTOR INSTALL UTILITY PIPES, CONDUITS, CABLES, ETC., IN THE SAME TRENCH PARALLEL TO AND ABOVE EXISTING WATER AND SEWER PIPES, EXCEPT WHERE THEY CROSS. ANY DEVIATION FROM NOTES 6, 7 AND 8 SHALL BE APPROVED IN WRITING BY THE RESPONSIBLE WATER AND SEWER UTILITY.
10. A NON-RESETTING ELAPSE TIME METER SHALL BE INSTALLED AT EACH PUMP TO RECORD THE TOTAL OPERATING HOURS OF THE STATION.
11. PAVEMENT RESTORATION SHALL BE IN ACCORDANCE WITH DADE COUNTY PUBLIC WORKS MANUAL STANDARD DETAIL No. R21.1.

Seal



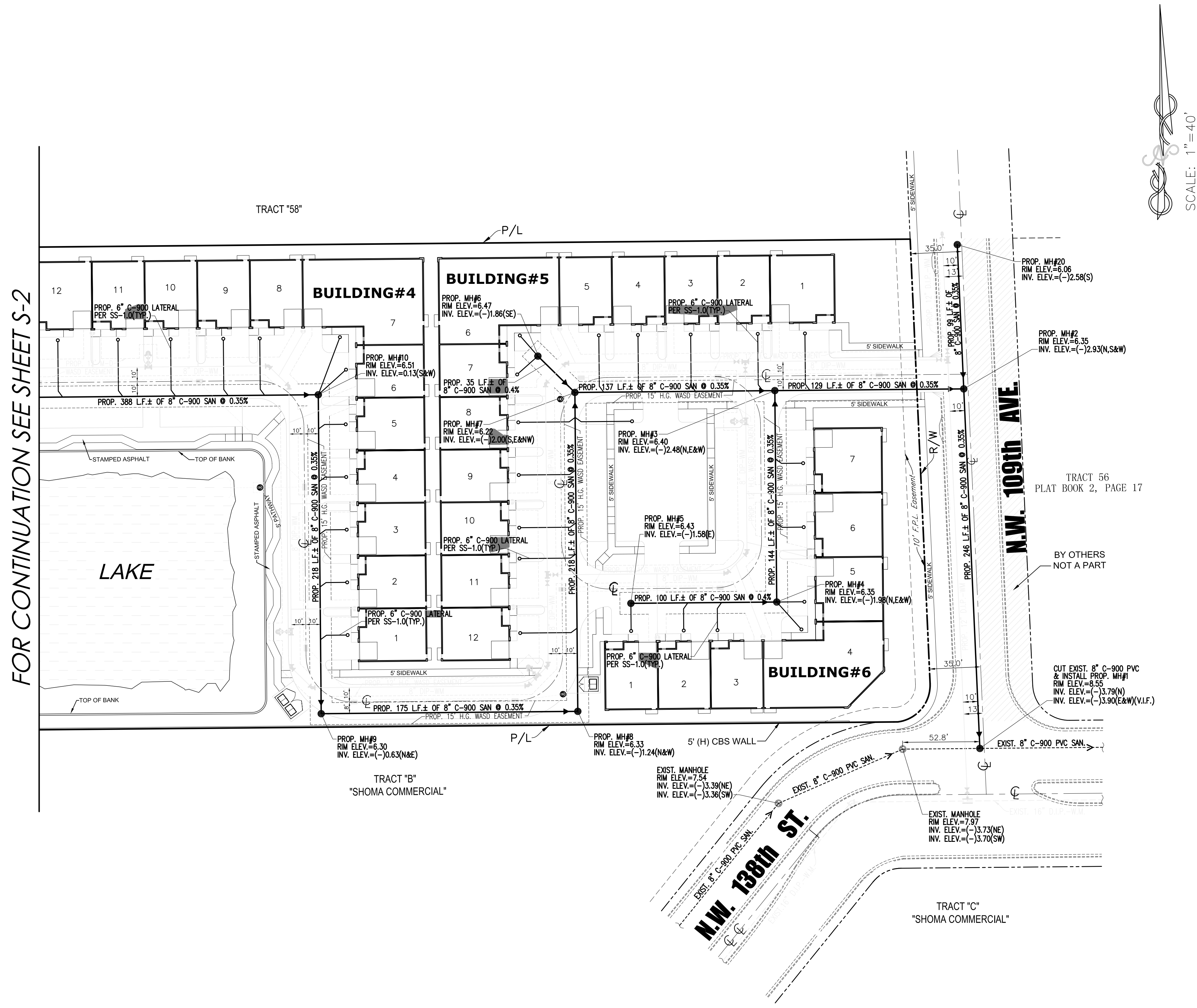
PATH FILE: D:\2006\06-09\0005\060262.Fixed 11-01-06\060262.Sewer 11-01-06.dwg

NO.	REVISIONS	DATE			
DESIGN	GENERAL REVISION	7-11-06			
V. Reeve	T				
DRAWN	EC	DATE	NOV. 2006		
Rodriguez Group of Florida, LLC.					
COVER SHEET					
OKEECHOBEE CENTRE					
VICINITY OF N.W. 138th ST. AND N.W. 112th AVENUE HIALEAH GARDENS - FLORIDA					
JobNo. 060262-S					
SHEET 1 OF 5					
S-1					

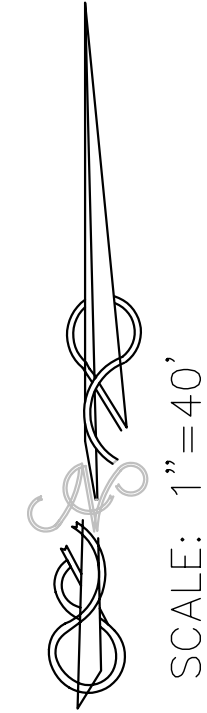
Victor Reeve P.E.
13832 SW 156 STREET
MIAMI, Florida 33177
PH: 305 378 6925
P.E.: 12324

SEWER COLLECTION SYSTEM

"OKEECHOBEE CENTRE"



FOR CONTINUATION SEE SHEET S-2



PATH: FILE: D:\2006\06-09\0609-0005\060262 Fixed 11-01-06\060262 Sewer 11-01-06.dwg

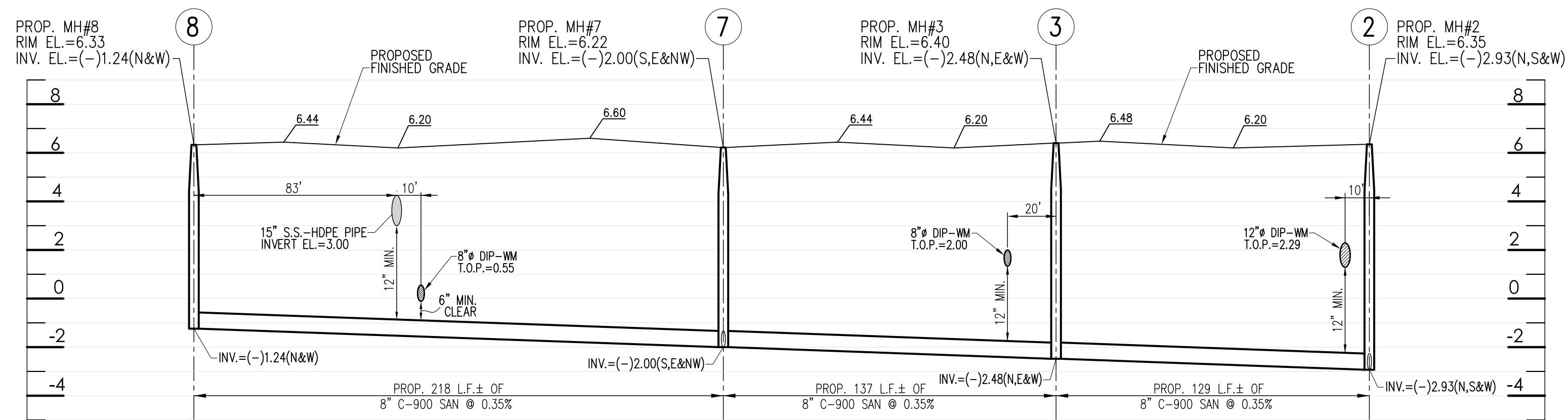
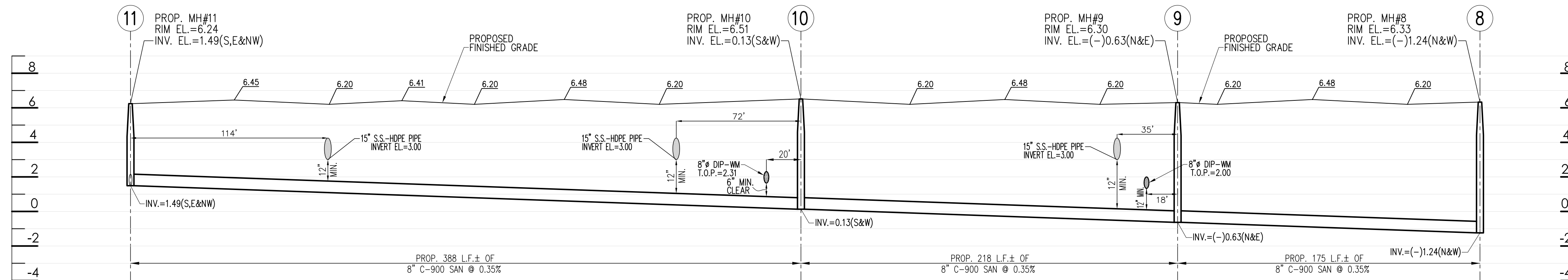
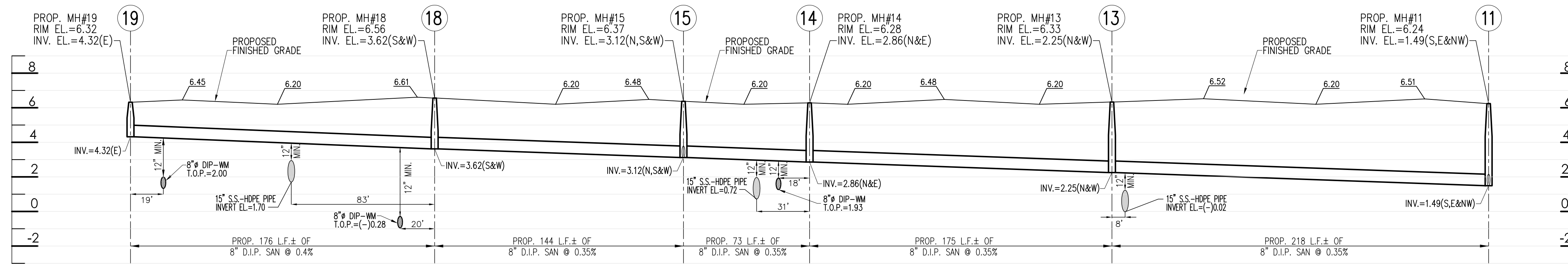
Seal

Victor Reeve P.E.
13832 SW 156 STREET
MIAMI, Florida 33177
PH: 305 378 6925
P.E.: 12324

JobNo. 060262-S	SHEET 3 OF 5	S-3	VICINITY OF N.W. 138th ST. AND N.W. 112th AVENUE HIALEAH GARDENS - FLORIDA		SEWER COLLECTION PLAN		Rodriguez Group of Florida, LLC.	
			OKEECHOBEE CENTRE		SEWER COLLECTION PLAN		Rodriguez Group of Florida, LLC.	
DESIGN V. Reeve	DRAWN EC	DATE NOV. 2006	NO. 1	REVISIONS GENERAL REVISION	DATE 7-11-06			

PROFILES

SCALE: 1"=40' (HORIZONTAL)
1"=4' (VERTICAL)



PATH: D:\2006\06-09\0609-0005\060262 Sewer 11-01-06.dwg

Seal

Victor Reeve P.E.
13832 SW 156 STREET
MIAMI, Florida 33177
PH: 305 378 6925
P.E.: 12324

NO.	DATE	REVISIONS
1	7-11-06	GENERAL REVISION

DESIGN: V. Reeve
DRAWN: ECG
DATE: NOV. 2006

SEWER PROFILES

OKEECHOBEE CENTRE
VICINITY OF N.W. 138th ST. AND N.W. 112th AVENUE
HIALEAH GARDENS - FLORIDA

JobNo.

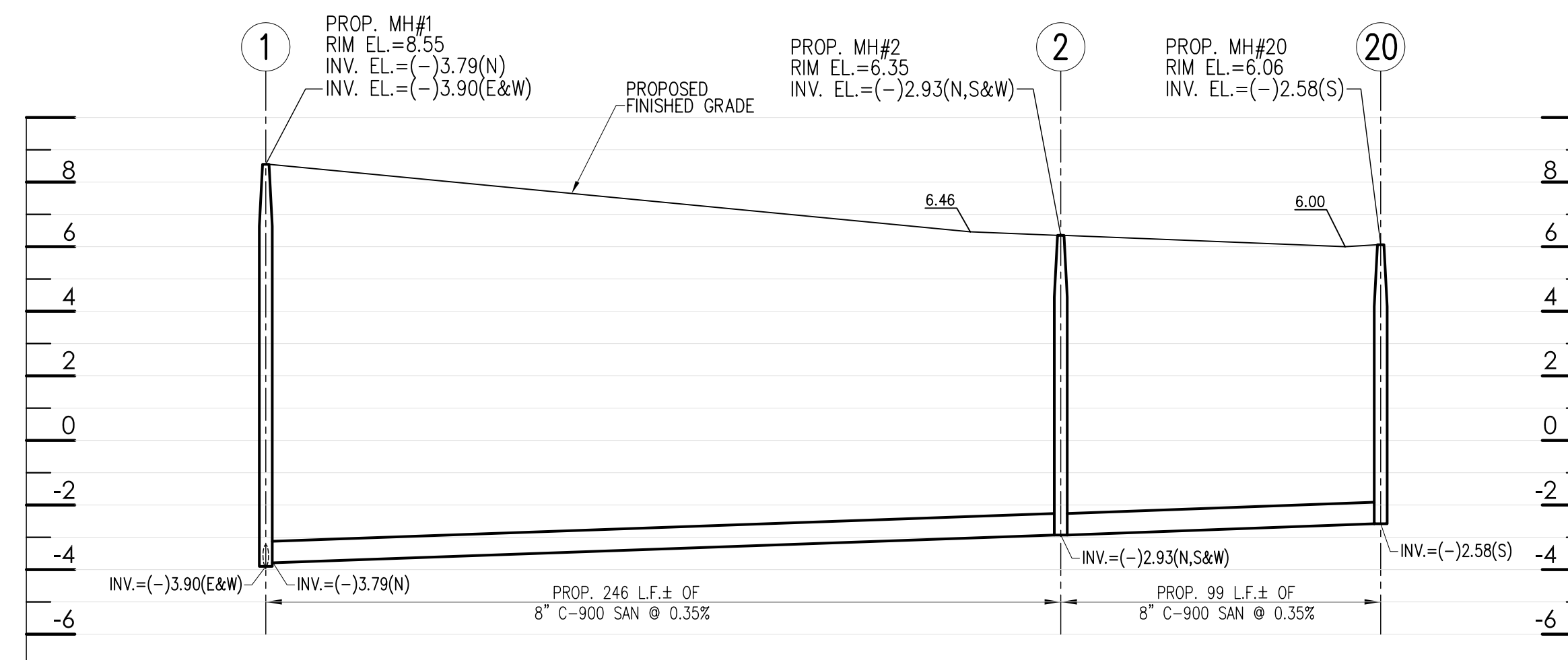
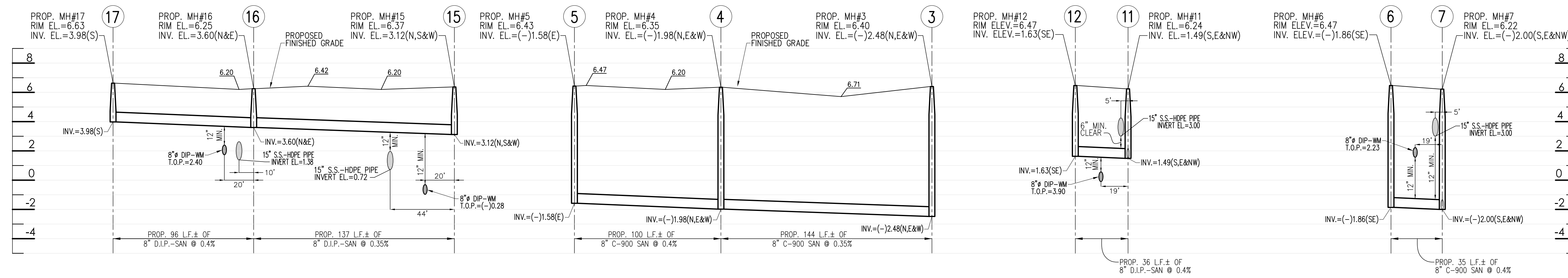
060262-S

SHEET 4 OF 5

S-4

PROFILES

SCALE: 1"=40' (HORIZONTAL)
1"=4' (VERTICAL)



N.W. 109th AVENUE

Seal

Victor Reeve P.E.
13832 SW 156 STREET
MIAMI, Florida 33177
PH: 305 378 6925
P.E.: 12324

Rodriguez Group of
Florida, LLC.

SEWER PROFILES

OKEECHOBEE CENTRE
VICINITY OF N.W. 138th ST. AND N.W. 112th AVENUE
HIALEAH GARDENS - FLORIDA

JobNo. 060262-S
SHEET 5 OF 5

DESIGN NO.	DRAWN BY	DATE
V. Reeve 1	EC	NOV. 2006

REVISIONS	NO.	DATE
GENERAL REVISION	1	7-11-06