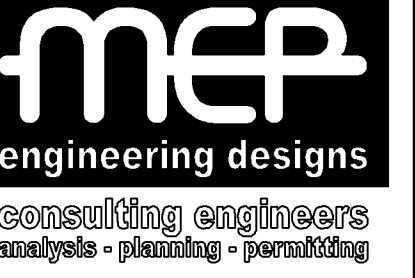


# SEWER LATERAL



CA #26942  
P.E. #61606  
9330 NW 13 ST  
DORAL FL 33172  
PHONE 305-594-2382  
FAX 305-594-2386

Revised By: P.E. #39838

Seal:

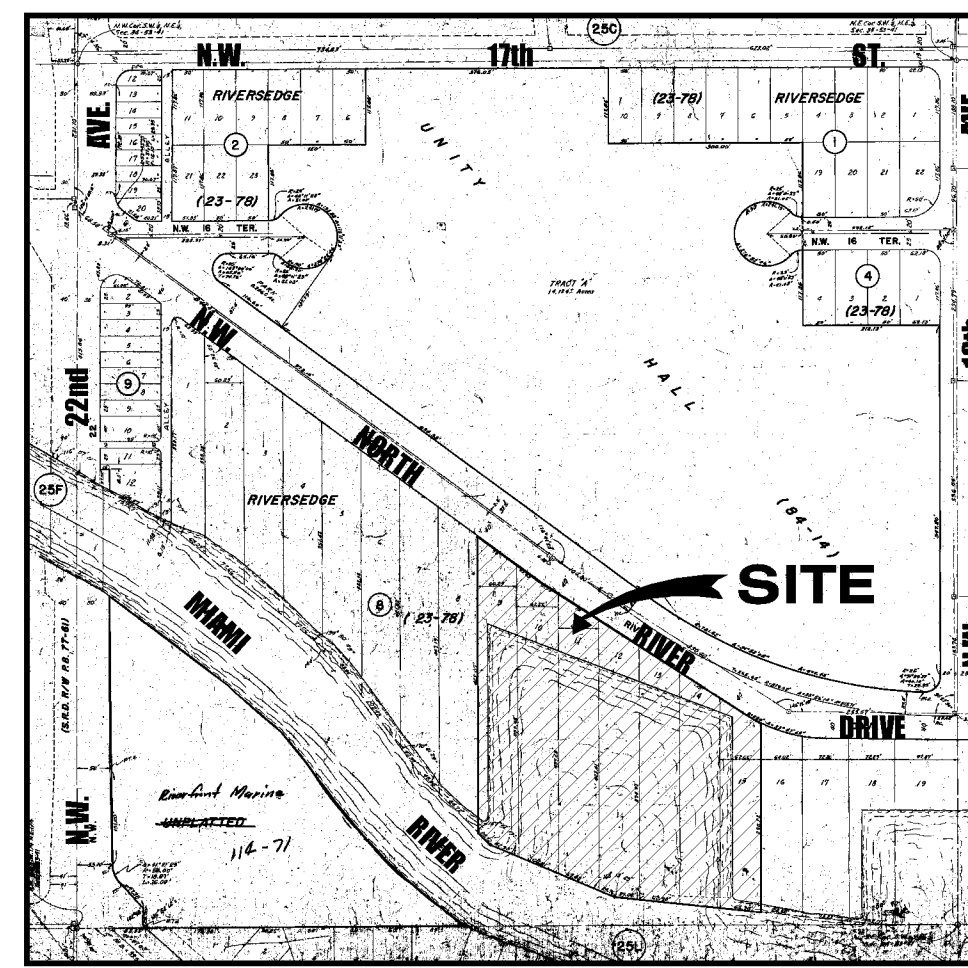
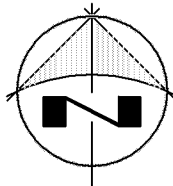
## "RIVER COVE MARINA"

LOCATED AT  
2000 N.W. North River Drive, Miami, FL. 33125

### GENERAL NOTES

(NOT A PART OF MDWASD REVIEW OR APPROVAL)

- ALL ELEVATIONS REFER TO THE M.S.L., NATIONAL GEODETIC VERTICAL DATUM (N.G.V.D.).
- ALL WORK TO BE DONE IN COMPLIANCE WITH THE REQUIREMENTS OF AND ACCEPTABLE OF THE CITY OF MIAMI PUBLIC WORKS AND THE BUILDING AND ZONING DEPARTMENTS, AND APPROVED BY MIAMI-DADE COUNTY DEPARTMENTS OF ENVIRONMENTAL RESOURCES MANAGEMENT (DERM).
- IT WILL BE THE CONTRACTOR'S RESPONSIBILITY, AS PART OF THE WORK TO BE DONE, TO COORDINATE HIS WORK WITH WORK BEING INSTALLED BY OTHER CONTRACTORS AND SUB-CONTRACTORS AND OWNER.
- THE CONTRACTOR SHALL VERIFY ALL EXISTING UTILITIES IN THE FIELD AND SHALL NOTIFY THE UTILITY COMPANIES IN THE AREA BEFORE THE START OF CONSTRUCTION. SUPPLEMENTARY ASSISTANCE MAY BE OBTAINED BY CONTACTING THE UNDERGROUND UTILITIES NOTIFICATION CENTER (UNCLE) AT THE TELEPHONE NUMBER 800/432-4770, UNCLE.
- WHERE TRENCHING MAY EXCEED 5 FEET IN DEPTH THE EXCAVATION SHALL COMPLY WITH THE FLORIDA TRENCH SAFETY ACT (SECTION 553.60 - 553.64, FLORIDA STATUTES), AND THE OCCUPATIONAL SAFETY AND HEALTH ADMINISTRATION'S (OSHA) TRENCH EXCAVATION SAFETY STANDARDS, 29 C.F.R. S 1 926.650 SUBPART INCLUDING ALL SUBSEQUENT REVISIONS OR UPDATES TO THESE STANDARDS AS ADOPTED BY THE DEPARTMENT OF LABOR AND EMPLOYMENT SECURITY (DLES). THE CONTRACTOR SHALL CONSIDER ALL AVAILABLE GEOTECHNICAL INFORMATION IN HIS DESIGN OF THE TRENCH EXCAVATION SAFETY SYSTEM.
- THE CONTRACTOR SHALL FURNISH ALL MATERIAL, LABOR, WATER, TOOLS, EQUIPMENT, LIGHT, POWER, TRANSPORTATION, AND OTHER FACILITIES NECESSARY FOR THE EXECUTION AND COMPLETION OF THE WORK. ALL MATERIALS SHALL BE NEW, AND BOTH WORKMANSHIP AND MATERIALS SHALL BE OF GOOD QUALITY. THE CONTRACTOR SHALL, IF REQUESTED TO, FURNISH SATISFACTORY EVIDENCE AS TO THE QUALITY OF THE MATERIALS.
- THE CONTRACTOR SHALL OBTAIN ALL NECESSARY CITY, COUNTY, AND STATE LICENSES PRIOR TO THE BEGINNING OF CONSTRUCTION OF THE PROJECT. IF SPECIAL PERMITS ARE REQUIRED FOR ANY PART OF THE PROJECT, THEY SHALL BE OBTAINED AND EXHIBITED. THE CONTRACTOR SHALL GIVE ALL NOTICES AND COMPLY WITH ALL LAWS, ORDINANCES, RULES, AND REGULATIONS BEARING ON THE CONDUCT OF THE WORK AS DRAWN AND SPECIFIED.
- CONTRACTOR MUST NOTIFY THE OWNER'S REPRESENTATIVE AND THE ENGINEER OF ANY FIELD CONDITION THAT REQUIRES A MODIFICATION TO THE DRAWINGS, PRIOR TO PROCEEDING WITH ANY CHANGES. CHANGE ORDER REQUEST AFTER THE FACT WILL NOT BE CONSIDERED FOR PAYMENT.
- CONTRACTOR MUST PROTECT EXISTING AND NEW DRAINAGE STRUCTURES BY INSTALLING A DOUBLE GEOTEXTILE FILTER ON EACH CATCH BASIN UNTIL ITS CORRESPONDING TRIBUTARY AREA IS PAVED OR RESTORES AND AFTER COMPLETION OF PAVING AND SODDING, ALL CATCH BASIN AND STORM SEWERS MUST BE CLEANED OF SAND, ROCK AND OTHER DELETERIOUS MATERIAL PRIOR TO ACCEPTANCE OF THE WORK.
- IT IS CONTRACTOR RESPONSIBILITY TO PROTECT EXISTING STRUCTURES, FACILITIES AND THOSE UNDER CONSTRUCTION AND TO RESTORE THEM TO THE ORIGINAL CONDITION IF DAMAGE.
- STREETS, SIDEWALK RESTORATIONS SHALL BE ACCORDING TO DETAILS AND APPLICABLE REQUIREMENTS OF THE CITY OF MIAMI PUBLIC WORKS DEPARTMENT.
- THIS WORK IS NOT CONSIDERED COMPLETED UNTIL AN AS-BUILT IS DELIVERED TO THE ENGINEER.
- SITE INFORMATION WAS OBTAINED FROM SURVEY PREPARED BY A. R. TOUSSAINT & ASSOCIATES, INC. WITH THE CERTIFICATE FIRM OF ALBERTO R. TOUSSAINT TO PROFESSIONAL SURVEYOR AND MAPPER No. 907, STATE OF FLORIDA. THEIR DRAWING No. 13876, DATE OF SURVEY: DEC. 12th 2005.



**LOCATION MAP**  
A PORTION OF SW 1/4, NE 1/4 OF SECTION 34, TOWNSHIP 53 SOUTH, RANGE 41 EAST  
MIAMI-DADE COUNTY, FLORIDA.  
SCALE = 1" : 300'

### LEGAL DESCRIPTION:

Lots 9, 10, 11, 12, 13, 14, and 15, Block 8, "RIVERSEDGE SUBDIVISION", according to the plat thereof as recorded in Plat Book 23, Page 78 of the Public Records of Miami-Dade County, Florida.

### INDEX TO DRAWING

- S-1 COVER AND NOTES
- S-2 PLAN AND PROFILES

### THE FOLLOWING ARE REQUIREMENTS PER DEPARTMENT OF HEALTH

(NOT A PART OF MDWASD REVIEW OR APPROVAL)

#### WATER MAIN HORIZONTAL SEPARATIONS

SEPARATIONS SHALL BE MURED OUTSIDE EDGE TO OUTSIDE EDGE.  
BETWEEN WATER MAINS AND STORM SEWERS, STORMWATER FORCE MAINS, OR RECLAIMED WATER LINES, SHALL BE 3 FT. MINIMUM.  
BETWEEN WATER MAINS AND VACUUM TYPE SEWER PREFERABLY 10 FT. AND AT LEAST 3 FT. MINIMUM.  
GRAVITY OR PRESSURE SANITARY SEWER, WASTEWATER FORCE MAINS OR RECLAIMED WATER PIPES SO JOINTS ARE AT LEAST 3 FEET FROM JOINTS IN VACUUM, STORM OR STORM FORCE MAINS, AT LEAST 6 FEET FROM JOINTS IN GRAVITY OR PRESSURE SEWERS, WASTEWATER FORCE MAINS OR RECLAIMED WATER.  
10 FT. TO ANY PART OF ON-SITE SEWER TREATMENT OR DISPOSAL SYSTEM.

#### WATER MAIN VERTICAL SEPARATIONS

SEPARATIONS BETWEEN WATER MAINS AND GRAVITY SEWER, VACUUM TYPE SEWER, VACUUM TYPE SEWER, STORM SEWERS, TO BE PREFERABLE 12 INCHES, OR AT LEAST 6 INCHES ABOVE, OR AT LEAST 12 INCHES BELOW.\*  
PRESSURE SANITARY SEWER, WASTEWATER OR STORM WATER FORCE MAIN, OR RECLAIMED WATER, AT LEAST 12 INCHES ABOVE OR BELOW.\*  
\* NOTE: CENTER ONE-FULL LENGTH OF WATER MAIN PIPE AT CROSSING; ALTERNATIVELY ARRANGE PIPES SO JOINTS ARE AT LEAST 3 FEET FROM JOINTS IN VACUUM, STORM OR STORM FORCE MAINS, AT LEAST 6 FEET FROM JOINTS IN GRAVITY OR PRESSURE SEWERS, WASTEWATER FORCE MAINS OR RECLAIMED WATER.

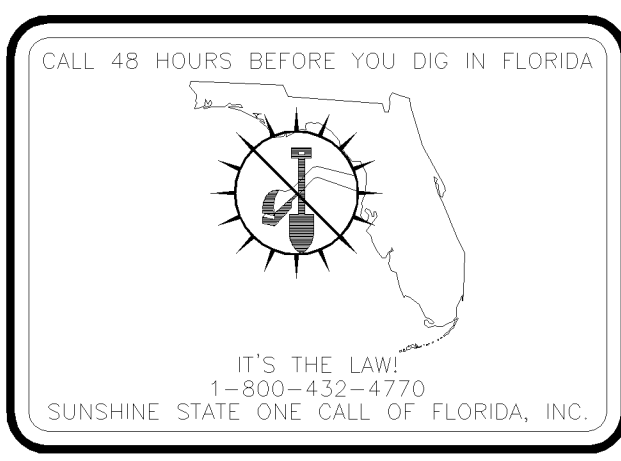
MIAMI-DADE WATER & SEWER DEPARTMENT	
AS-BUILT REQUIREMENTS	GS-0.5 LATEST EDITION

- AT THE COMPLETION OF ANY WATER AND SEWER JOB EITHER DONATION OR CONTRACT, THE CONTRACTOR SHALL SUBMIT:
    - "AS-BUILT" MYLAR 24" x 36" (MIN. 4 MIL THICKNESS) FOR EACH PHASE.
    - BLUE LINE (FROM MYLAR) WHICH HAS BEEN SIGNED AND SEALED BY REGISTERED SURVEYOR OR ENGINEER OF RECORD, AND ENDORSED BY THE CONTRATOR. (QTY. OF PRINTS, AS REQUIRED BY THE DEPARTMENT).
  - "AS-BUILT" FORMAT:
    - 24" x 36" MYLAR IN INK ONLY.
    - THE WORD "AS-BUILT" IN LARGE LETTERS.
    - TITLE BLOCK WITH DEPARTMENT E.R. NUMBER AND PERTINENT INFORMATION.
    - PREFERRED SCALE TO BE 1"=40' HORIZONTALLY AND 1"=4' VERTICALLY.\*
    - STREET NOMENCLATURE.
    - SEPARATE WATER AND SEWER PROFILE.
    - STATION MAIN STARTING WITH 0+00 AT PERMANENT REFERENCE POINT (I.E. C, S, ETC.) AND TO RUN CONTINUOUSLY TO END OF MAIN AT CENTERLINE OF PIPE. EASEMENTS, IF ANY, TIED TO PERMANENT REFERENCE POINT.
    - IDENTIFY ALL CONTROL LINES (I.E. BLDG. LINE, PROPERTY LINE, R/W, ETC.).
    - ALL "PROPOSED" INFORMATION TO BE REMOVED FROM MYLAR, LEAVING ONLY "AS-BUILT" INFORMATION REFLECTED IN DRAWINGS.
  - WATER "AS-BUILTS" MUTS INCLUDE:
    - PLAN SHOWING PIPE SIZE, MATERIAL AND OFFSET OF MAIN, DEFLECTIONS (IF ANY), STATION OF SERVICES, HYDRANTS AND FITTINGS AT THE MAINLINE (IF PERPENDICULAR TO IT), AND AT MAIN AND END OF SERVICES IF ANY, OTHER ANGLE, AND DEFLECTION OF PIPE, IF ANY.
    - PROFILE SHOWING TOP OF GROUND AND TOP OF PIPE ELEVATIONS AT EVERY 100' STATION AND AT ANY CHANGE IN GRADE (WITH CORRESPONDING STATION), PIPE SIZE AND PIPE MATERIALS REFERENCE TO PLAN.
  - SEWER "AS-BUILTS" MUST INCLUDE:
    - PLAN SHOWING MANHOLE NUMBER, PIPE SIZE AND PIPE MATERIAL, DEFLECTION, IF ANY (FORCE MAIN ONLY), AND LOCATION OF LATERALS WITH REFERENCE TO MANHOLE.
    - PROFILE SHOWING MANHOLE NUMBER (AS PER PLAN), RIM AND INVERT ELEVATIONS (IF MORE THAN ONE INVERT, LABEL NORTH, SOUTH, ETC.), AND STATION STARTING AT 0+00 AT DOWNSTREAM MANHOLE.
    - FORCE MAIN "AS-BUILTS", SAME AS WATER.
- \* OTHER SCALES MAY BE PERMITTED, BUT MUST BE APPROVED BY THE DEPARTMENT PRIOR TO PREPARATION OF DRAWINGS.

MIAMI-DADE WATER & SEWER DEPARTMENT	
STANDARD REQUIREMENTS FOR WATER AND SEWER CONSTRUCTION	GS-0.5 LATEST EDITION

- ALL MATERIALS AND LABOR UNDER THIS PROJECT SHALL BE IN STRICT ACCORDANCE WITH THE REQUIREMENTS OF THE MIAMI-DADE WATER AND SEWER DEPARTMENT AND SHALL CONFORM TO THE STANDARDS AND SPECIFICATIONS AVAILABLE AND ON FILE WITH THE DEPARTMENT. SUBMIT SHOP DRAWINGS FOR ALL MATERIALS.
- COVER OVER WATER OR SEWER FORCE MAINS SHALL BE 4'-0" MIN.
- ALL MAIN LINE VALVES SHALL BE INSTALLED COMPLETE WITH 10" RISER PIPES AND No. 3 OR 53 VALVE BOXES. FIRE HYDRANTS AND SERVICE VALVES SHALL BE INSTALLED COMPLETE WITH 6" RISER PIPES AND No. 2 VALVE BOXES.
- ALL FORCE MAIN SERVICE CONNECTIONS INTO PRESSURE TRANSMISSIONS MAINS SHALL HAVE A SHUT OFF VALVE AND CHECK VALVE AT THE POINT OF ENTRY.
- ALL GRAVITY SYSTEMS SHALL BE CONSTRUCTED IN ACCORDANCE WITH DEPARTMENT STANDARDS.
- ALL WATER METERS WILL BE INSTALLED BY THE MIAMI-DADE WATER AND SEWER DEPARTMENT PROVIDING THE APPROPRIATE CHARGES HAVE BEEN PREPAID.
- FIRE HYDRANT REQUIREMENTS (NUMBER AND LOCATION) SHALL BE AS REQUIRED BY DADE COUNTY FIRE DEPARTMENT OR THE APPROPRIATE FIRE AGENCY WITH INSTALLATION IN ACCORDANCE WITH DEPARTMENT STANDARDS.
- CONTRACTOR MUST CALL M-DWASD INSPECTION DIVISION TO ARRANGE FOR A PRECONSTRUCTION MEETING 2 FULL BUSINESS DAYS PRIOR TO PROPOSED START OF CONSTRUCTION. CONTACT ONE CALL CENTER 48 HRS. PRIOR TO EXCAVATION.
- CONTRACTOR INSPECTOR WILL INSPECT ANY FACILITIES APPROVED BY THE DEPARTMENT. ALL OTHER REQUIREMENTS OF THE PERMITTING AGENCY SHALL BE IN ACCORDANCE WITH THEIR STANDARDS AND REQUIREMENTS.
- WORK PERFORMED UNDER THIS PROJECT WILL NOT BE CONSIDERED AS COMPLETE UNTIL FINAL ACCEPTANCE OF THE SYSTEM BY THE DEPARTMENT AND UNTIL THE FOLLOWING DOCUMENTS ARE RECEIVED AND APPROVED BY THE DEPARTMENT.
  - EASEMENTS, IF REQUIRED.
  - CONTRACTOR'S WAIVER AND RELEASE OF LIEN.
  - ABSOLUTE BILL OF SALE.
  - A CONTRACTOR'S LETTER OF WARRANTY (I.E., LETTER AGREEMENT).
  - DEVELOPER'S CONTRACT BOND (I.E., CONTRACT AGREEMENT).
- "AS-BUILT" 4 MIL MYLAR 24" x 36" SHOWING SPECIFIC LOCATION, DEPTH, ETC. OF ALL WATER AND SEWER FACILITIES AS LOCATED BY A LICENCED SURVEYOR, ALONG WITH PRINTS OF "AS-BUILT" WHICH HAVE BEEN SIGNED AND SEALED BY A REGISTERED SURVEYOR OR ENGINEER OF RECORD, AND ENDORSED BY THE CONTRACTOR. (No. OF PRINTS: 3-FOR WATER, 4-FOR GRAVITY SEWER AND 5-FOR FORCE MAIN OR PUMP STATION PROJECTS).
- ALL NEW CONNECTIONS FROM EXISTING DEPARTMENT MAINS TO BE MADE BY DEPARTMENT FORCES ONLY. THE CONTRACTOR TO EXCAVATE AT REQUIRED LOCATIONS, PROVIDE AND INSTALL MATERIAL WITH FITTINGS, PRIOR TO TAP.
- AN APPROVED PAVING AND DRAINAGE PLAN MUST BE SUBMITTED TO MDWASD FOR ALL NEW SUBDIVISIONS PRIOR TO APPROVAL OF WATER AND SEWER PERMIT PLANS, UPON REQUEST.
- UNLESS OTHERWISE SPECIFIED, ALL TAPS 20 INCHES AND SMALLER FOR CONNECTIONS TO EXISTING MAINS WILL REQUIRE A TAPPING SLEEVE AND TAPPING VALVE PROVIDED AND INSTALLED BY DEPARTMENT FORCES. UNDER NO CIRCUMSTANCES WILL THE CONTRACTOR BE PERMITTED TO TAP EXISTING MAINS IN THE SIZE RANGE SPECIFIED ABOVE.

LEGEND & ABBREVIATIONS							
DEFINITION	ABBREVIATION	SYMBOL		DEFINITION	ABBREVIATION	SYMBOL	
		EXISTING	PROPOSED			EXISTING	PROPOSED
CENTERLINE	C	---	---	SEWAGE FLOW DIRECTION		▶	▶
MONUMENT LINE	M	---	---	STORM SEWER MANHOLE	SS-MH	⊙	⊙
PROPERTY LINE	R/W	---	---	FRENCH DRAIN		▬	▬
RIGHT-OF-WAY LINE	R/W	---	---	CURB INLET (1)		▬	▬
GRADE ELEVATIONS	ELEV	---	---	CURB INLET (2)		▬	▬
GAS MAIN	4" G	---	---	CURB INLET (3)		▬	▬
WATER MAIN	8" WM	---	---	CATCH BASIN (1)	CB	▬	▬
FITTING NUMBER				CATCH BASIN (2)	CB	▬	▬
GATE, PLUG & BUTTERFLY VALVES	WV	⊙	⊙	DRAINAGE FLOW		▬	▬
PLUG & FLUSHING VALVE OUTLET	⊙	⊙	⊙	CURB		▬	▬
BENDS, (90°, 45°, 22-1/2°, 11-1/4°)		⊙	⊙	CURB & GUTTER		▬	▬
SINGLE METER INSTALLATION	WM	⊙	⊙	VALLEY GUTTER		▬	▬
WATER METER (DUAL SERVICE WS 212)	WM	⊙	⊙	POWER POLE (CONCRETE / WOOD)	CPP / WPP	⊙	⊙
REDUCER	RED.	⊙	⊙	TELEPHONE POLE		⊙	⊙
TEE		⊙	⊙	COMBINATION POLE		⊙	⊙
CROSS		⊙	⊙	GUY WIRE AND ANCHOR PIN	GVA	⊙	⊙
FIRE HYDRANT	FH	⊙	⊙	LIGHT POLE		⊙	⊙
SANITARY SEWER	8" SAN. MAIN	---	---	CAST IRON	C.I.	▬	▬
SANITARY SEWER LATERAL		---	---	DUCTILE IRON PIPE	D.I.P.	▬	▬
STRUCTURE NUMBER				POLYVINYL CHLORIDE	P.V.C.	▬	▬
SANITARY MANHOLE	SAN-MH	⊙	⊙				



## PERMIT SET

© 2006  
MEP ENGINEERING DESIGNS, INC. HEREBY RESERVE THEIR COPYRIGHTS TO THE IDEAS AND DRAWINGS SHOWN. THESE DRAWINGS ARE TO BE USED FOR THE PROJECT STATED ONLY AND SHALL NOT BE USED OR REPRODUCED FOR ANY OTHER PURPOSE WHATSOEVER WITHOUT THE EXPRESSED WRITTEN CONSENT. CONTRACTORS SHALL VERIFY ALL DIMENSIONS AND SHALL NOT RELY ON SCALED DIMENSIONS. NOTIFY THE ENGINEER OF ANY DISCREPANCIES PRIOR TO COMMENCING WORK.

Revisions	Date
MDWASD	10/26/07
MDWASD	12/21/07

SEWER LATERAL  
COVER AND NOTES

"RIVER COVE MARINA"  
2000 N.W. North River Drive, Miami, FL 33125  
F.C.I.C. # 01-3134-054-1170

Date: 08/30/2007  
Scale: AS NOTED  
Drawn: INVENTION CORP.  
Job: 0606-0001

Sheet  
**S-1**  
of 2 Sheets

PATH: FILE: Z:\INVENTION\_CORP\2006\06-08\0606-0001 - River Cove Marina\0606-0001 - SEWER RIVER COVE MARINA.dwg

