

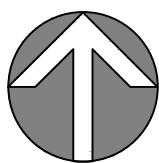
HYATT HOTEL FLORIDA KEYS

"FARO BLANCO" - SITE I

1996 Overseas Highway, Marathon, FL.

SCOPE OF WORK

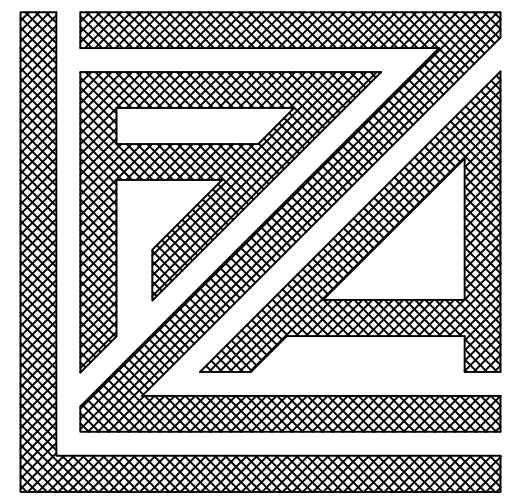
- ALUMINUM GUARDRAIL AND HANDRAILS
FOR CONCRETE STAIRS No. 1, 2 AND 3.



SATELLITE VIEW
N.T.S.

SHEET INDEX

SD-0	COVER
SD-1	KEY PLANS AND STRUCTURAL NOTES
SD-2	STAIR - ISOMETRIC
SD-3	STAIR 1 - PLAN AND SECTION
SD-4	STAIR 2 - PLAN AND SECTION
SD-5	STAIR 3 - PLAN AND SECTION
SD-6	STAIR (TYPICAL) SECTIONS
SD-7	GENERAL DETAILS
SD-8	BRACKETS DETAILS



LAZA IRON
WORKS, INC.

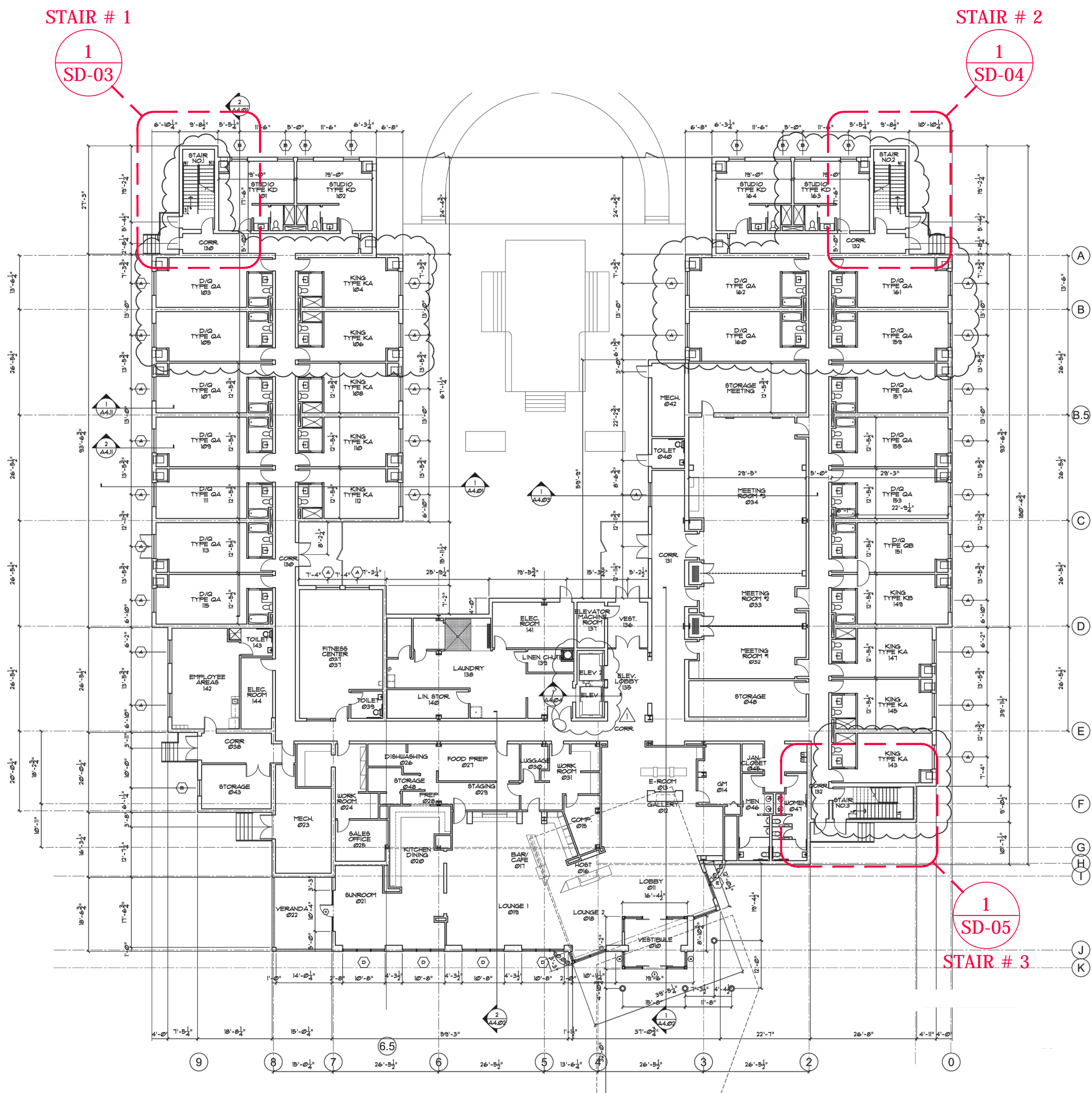
7251 N.Miami Ave.
MIAMI, FLORIDA 33150
TEL. (305)-754-8200
FAX. (305)-754-8222

DESCRIPTION
GUARDRAIL AND HANDRAIL
COVER
HYATT HOTEL FLORIDA KEYS
FARO BLANCO - SITE I
1996 Overseas Highway, Marathon, FL.

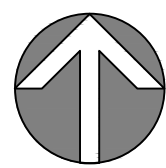
DATE
05-24-2014

REVISIONS

SD- 00
1 OF 9



1
SD-01 KEY PLAN
1st FLOOR PLAN
FULL SCALE: 6" = 1'-0" (24"X36")
HALF SCALE: 3" = 1'-0" (13"X19")



STRUCTURAL NOTES

GENERAL NOTES:

ALL DIMENSIONS AND CONDITIONS MUST BE VERIFIED IN THE FIELD. DO NOT SCALE THE DRAWINGS. FOLLOW WRITTEN DIMENSIONS ONLY. ANY DISCREPANCIES SHALL BE BROUGHT TO THE ATTENTION OF THE ENGINEER PRIOR TO PROCEEDING WITH THE AFFECTED PART OF THE WORK.

THE STRUCTURE IS DESIGNED TO BE SELF SUPPORTING AND STABLE AFTER THE BUILDING IS COMPLETE. IT IS THE CONTRACTOR'S RESPONSIBILITY TO DETERMINE ERECTION PROCEDURES AND SEQUENCES TO INSURE SAFETY OF THE BUILDING AND ITS COMPONENTS DURING ERECTION.

DESIGN LOADS FOR RAILING:

THE STRUCTURAL FRAMING WAS DESIGN USING F.B.C. 2010, AND THE FOLLOWING SUPERIMPOSED LOADS.

1618.4.6 RAILING

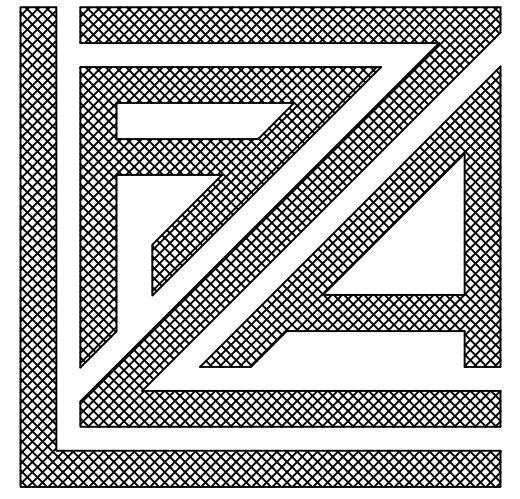
1618.4.6.1 RAILINGS, STAIR-RAILINGS AND OTHER SIMILAR SAFEGUARDS SHALL BE DESIGNED TO RESIST A LOAD OF 50 POUNDS PER LINEAL FOOT (74 KG/M) OR A CONCENTRATED LOAD OF 200 POUNDS (690 N) APPLIED IN ANY DIRECTION AT THE TOP OF SUCH BARRIERS AT ANY LOCATION ON THE SAFEGUARD, WHICHEVER CONDITION PRODUCES THE MAXIMUM STRESSES. THE REACTIONS AND STRESSES CAUSED BY THE ABOVE REFERENCED UNIFORM AND CONCENTRATED LOADS SHALL BE CONSIDERED NOT BE ACTING SIMULTANEOUSLY.

1618.4.6.2 INTERMEDIATE RAILS, BALUSTERS AND PANEL FILLERS SHALL BE DESIGNED FOR A UNIFORM HORIZONTAL LOAD OF NOT LESS THAN 25 POUNDS PER SQUARE FOOT (1197 PA) OVER THE GROSS AREA OF THE GUARD, INCLUDING THE AREA OF ANY OPENINGS IN THE GUARD, OF WHICH THEY ARE A PART WITHOUT RESTRICTION BY DEFLECTION. REACTIONS RESULTING FROM THIS LOADING NEED NOT BE ADDED TO THE LOADING SPECIFIED IN §1617.4.6.1 IN DESIGNING THE MAIN SUPPORTING MEMBERS OF GUARDS.

STRUCTURAL ALUMINUM:

THESE SPECIFICATIONS SHALL APPLY TO THE DESIGN OF ALUMINUM ALLOY LOAD CARRYING MEMBERS. COMPUTATIONS OF FORCES, MOMENTS, STRESSES AND DEFLECTIONS SHALL BE IN ACCORDANCE WITH ACCEPTED METHODS OF ELASTIC STRUCTURAL ANALYSIS AND ENGINEERING DESIGN.

1. ALL ELEMENTS SHALL BE ALUMINUM ALLOY 6061-T6 UNLESS NOTICED OTHERWISE.
2. ALL WELDS TO COMPLY WITH A.W.S CODE (LATEST EDITION).
3. COVER WELDS WITH CORROSION RESISTANT COATING.
4. STRUCTURES ARE DESIGN IN ACCORDANCE WITH THE FOLLOWING CODES: ALUMINUM DESIGN MANUAL.
5. ALL FRAMES HAVE BEEN DESIGN USING RATIONAL ANALYSIS
6. ALL CONNECTION SHALL BE FULL WELDED (U.Q.N.), WITH THE STRUCTURAL ALUMINUM ALLOY FILLET WELD: 5356 UNLESS NOTICED OTHERWISE.
7. ALL FASTENERS SHALL BE SELF DRILLING FASTENERS BY ITW-BUILDEX.
8. ALUMINUM MEMBERS IN CONTACT WITH CONCRETE SHALL BE PROTECTED WITH ALKALI-RESISTANT COATING, SUCH AS HEAVY BODIED BITUMINOUS PAINT OR WATER-WHITE METHACRYLATE LACQUER ACCORDING TO FLORIDA BUILDING CODE EDITION 2007 SECTION 2003.8.4.4.
9. ALL ANCHOR BOLTS SHALL BE 304SS KWIK BOLT 3 BY HILTI UNLESS OTHERWISE NOTICE.



**LAZA IRON
WORKS, INC.**

7251 N.Miami Ave.
MIAMI, FLORIDA 33150
TEL. (305)-754-8200
FAX. (305)-754-8222

DESCRIPTION

GUARDRAIL AND HANDRAIL
KEY PLANS AND STRUCTURAL NOTES
HYATT HOTEL FLORIDA KEYS
FARO BLANCO - SITE I
1996 Overseas Highway, Marathon, FL.

DATE

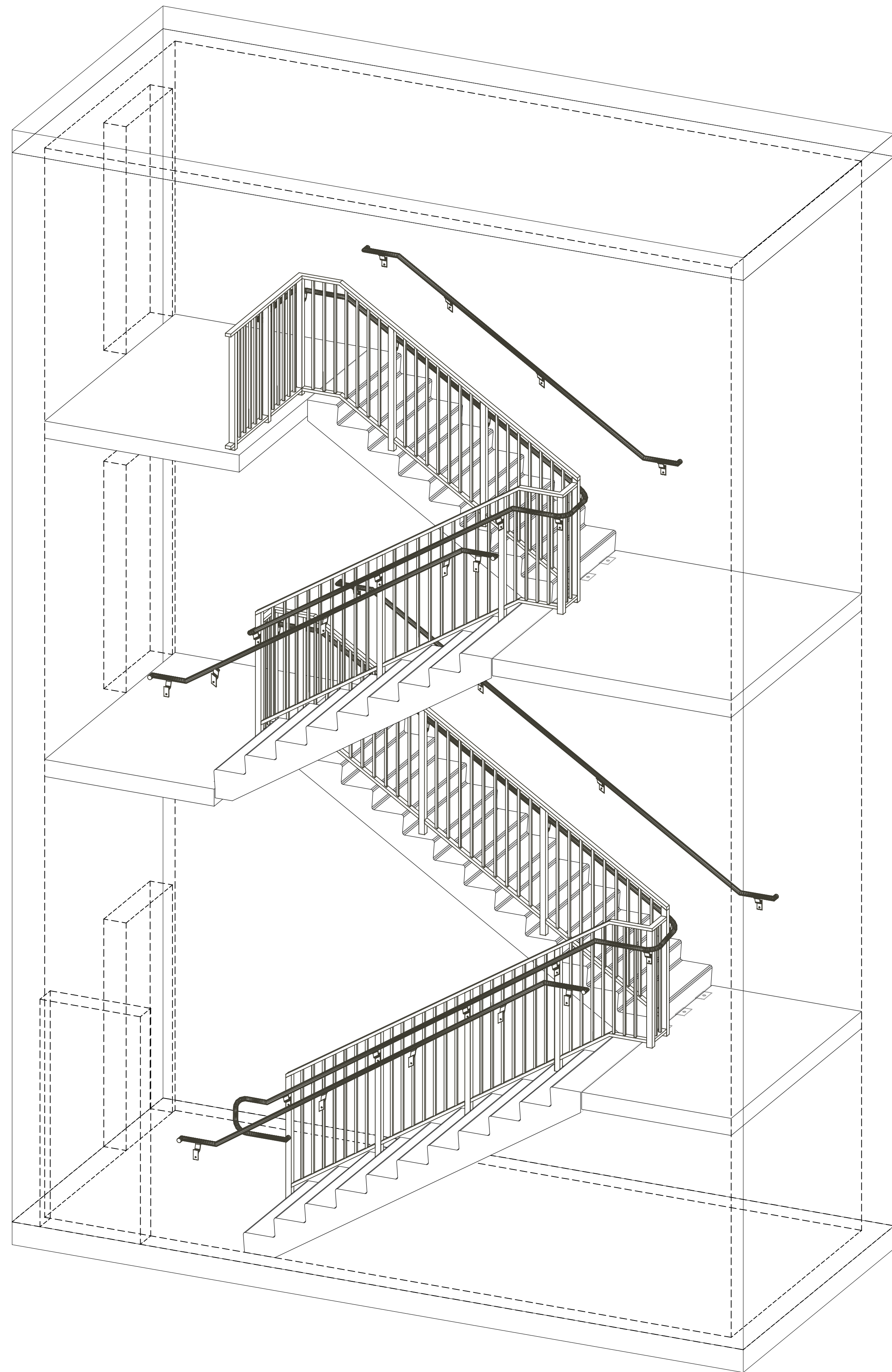
05-24-2014

REVISIONS

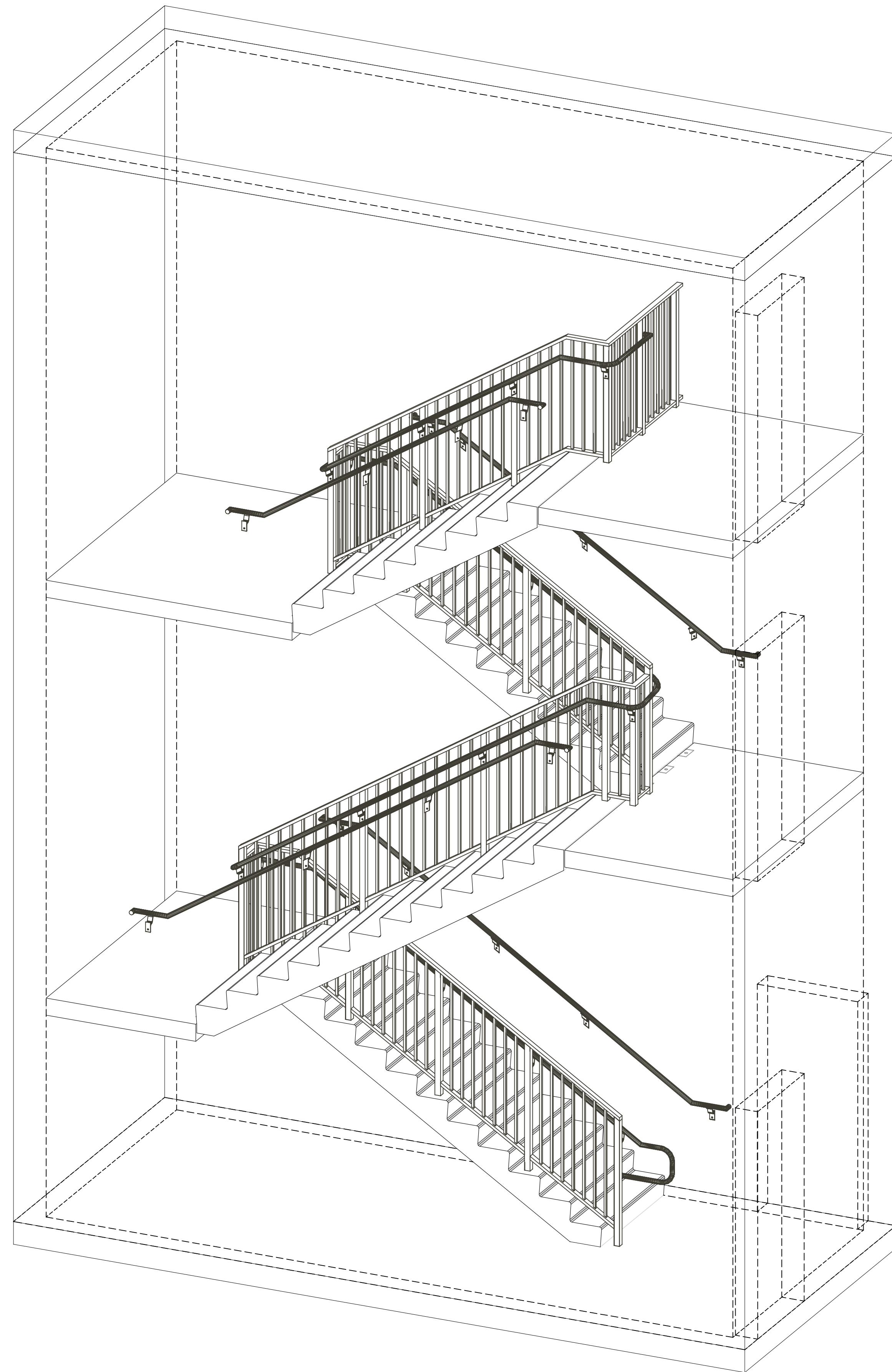
SD- 01

2 OF **9**

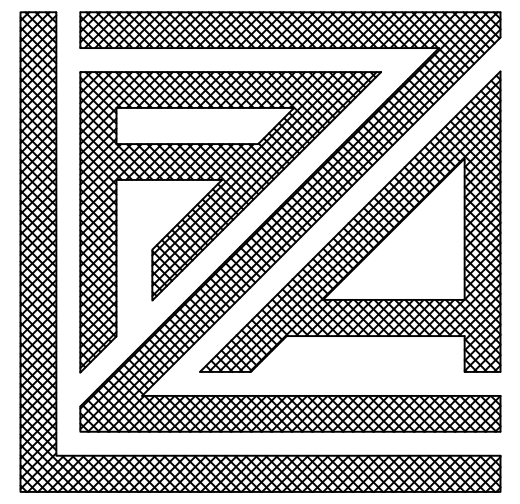
\\NETWORKDRIVE\Public\Shared\Contractors\Coastal\Faro Blanco\Hyatt Hotel\Stairs\Shop Drawings\Cad Files\CCFB Guardrails.dwg - May 30, 2014 - 4:53 pm



1
SD-02 STAIR - ISOMETRIC
FRONT VIEW
FULL SCALE: 1/2" = 1'-0" (24"X36")
HALF SCALE: 1/4" = 1'-0" (13"X19")

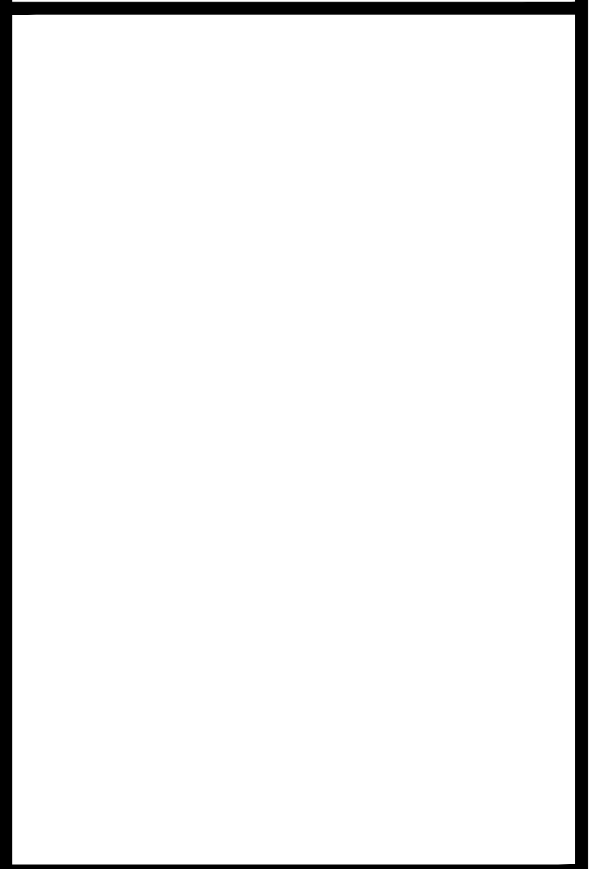


2
SD-02 STAIR - ISOMETRIC
INTERIOR VIEW
FULL SCALE: 1/2" = 1'-0" (24"X36")
HALF SCALE: 1/4" = 1'-0" (13"X19")



LAZA IRON
WORKS, INC.

7251 N.Miami Ave.
MIAMI, FLORIDA 33150
TEL. (305)-754-8200
FAX. (305)-754-8222



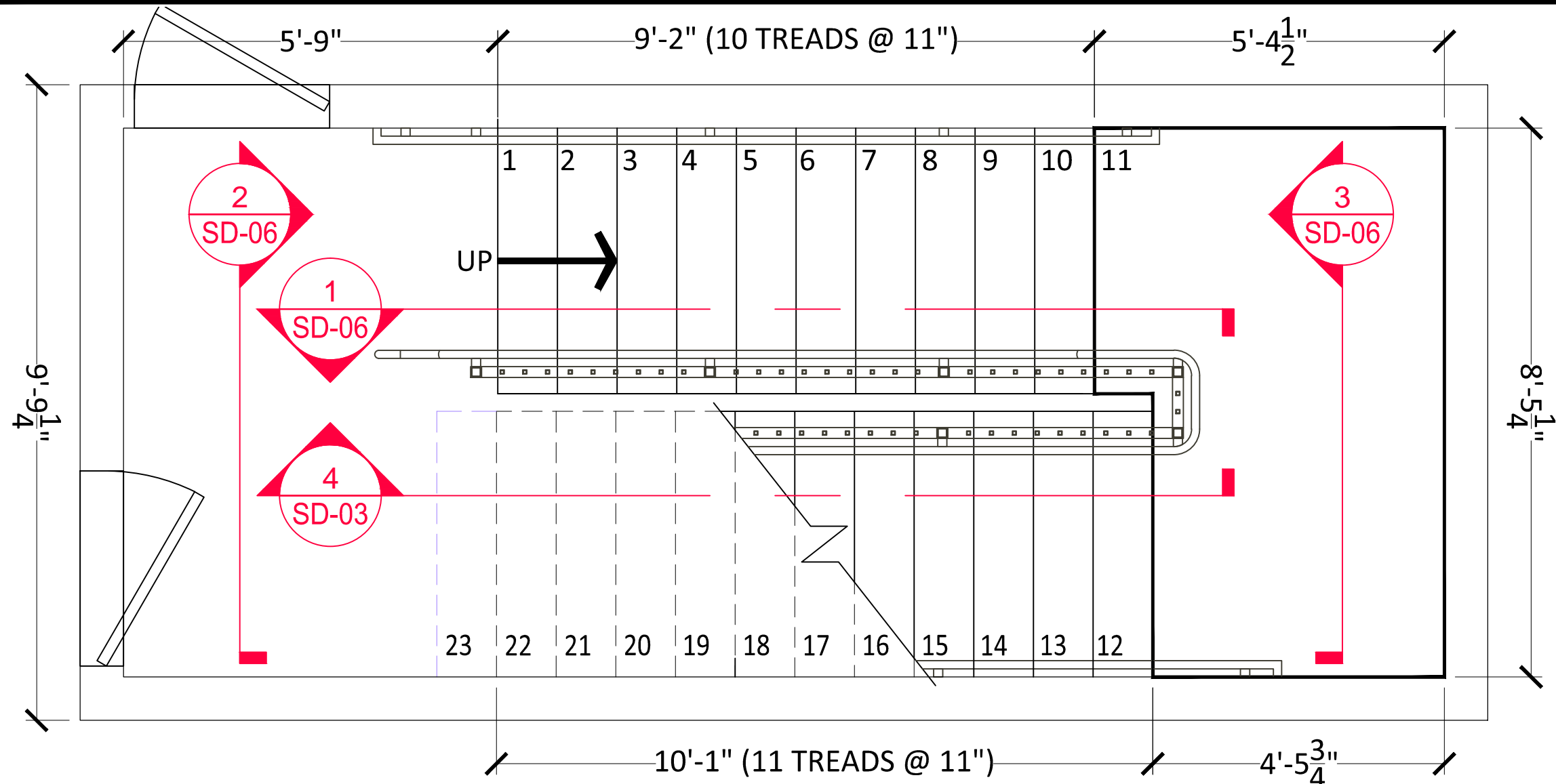
DESCRIPTION
GUARDRAIL AND HANDRAIL
STAIR - ISOMETRIC
HYATT HOTEL FLORIDA KEYS
FARO BLANCO - SITE I
1996 Overseas Highway, Marathon, FL.

DATE
05-24-2014

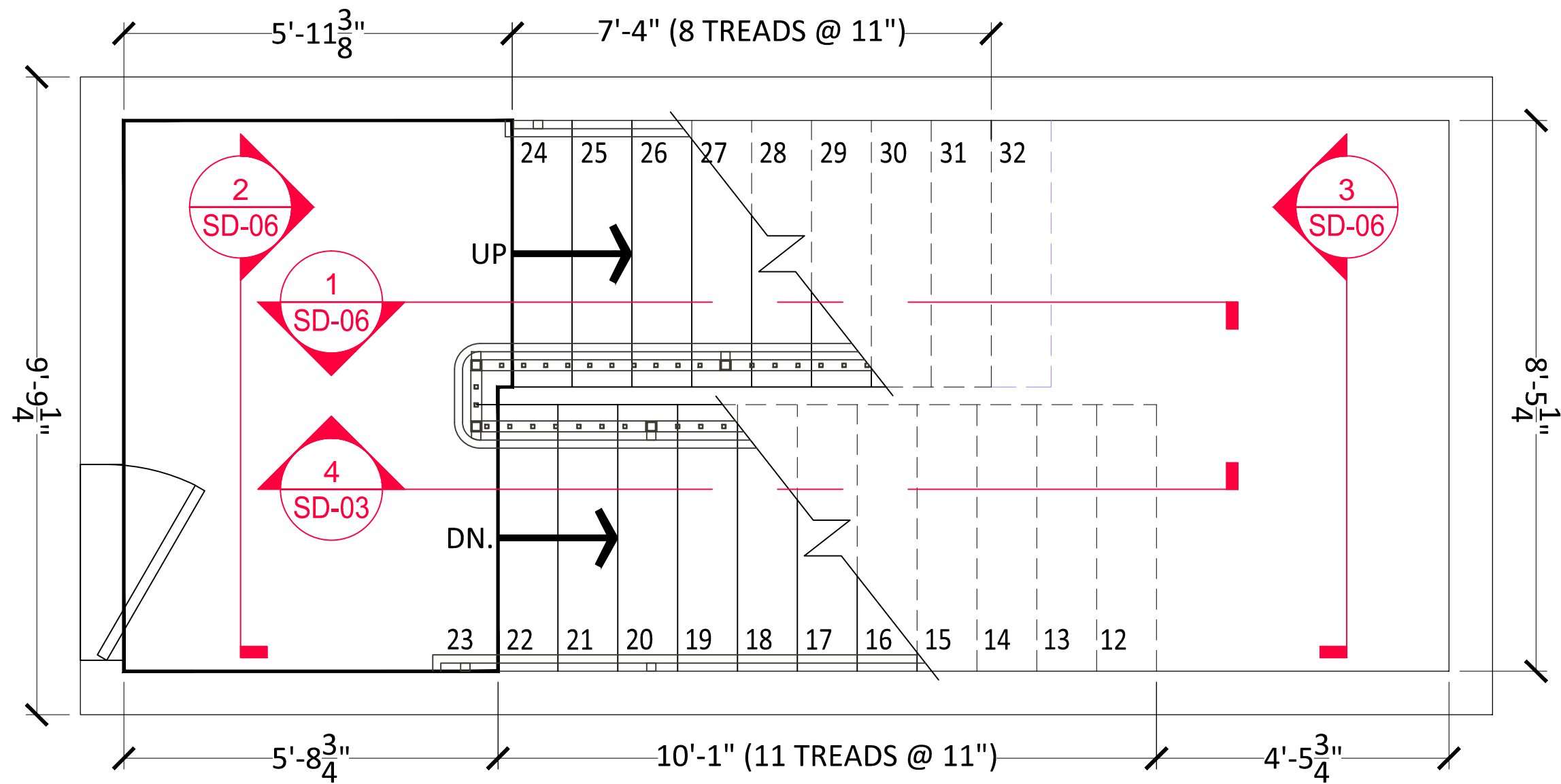
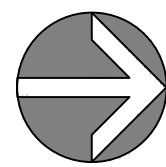
REVISIONS

SD-02
3 OF 9

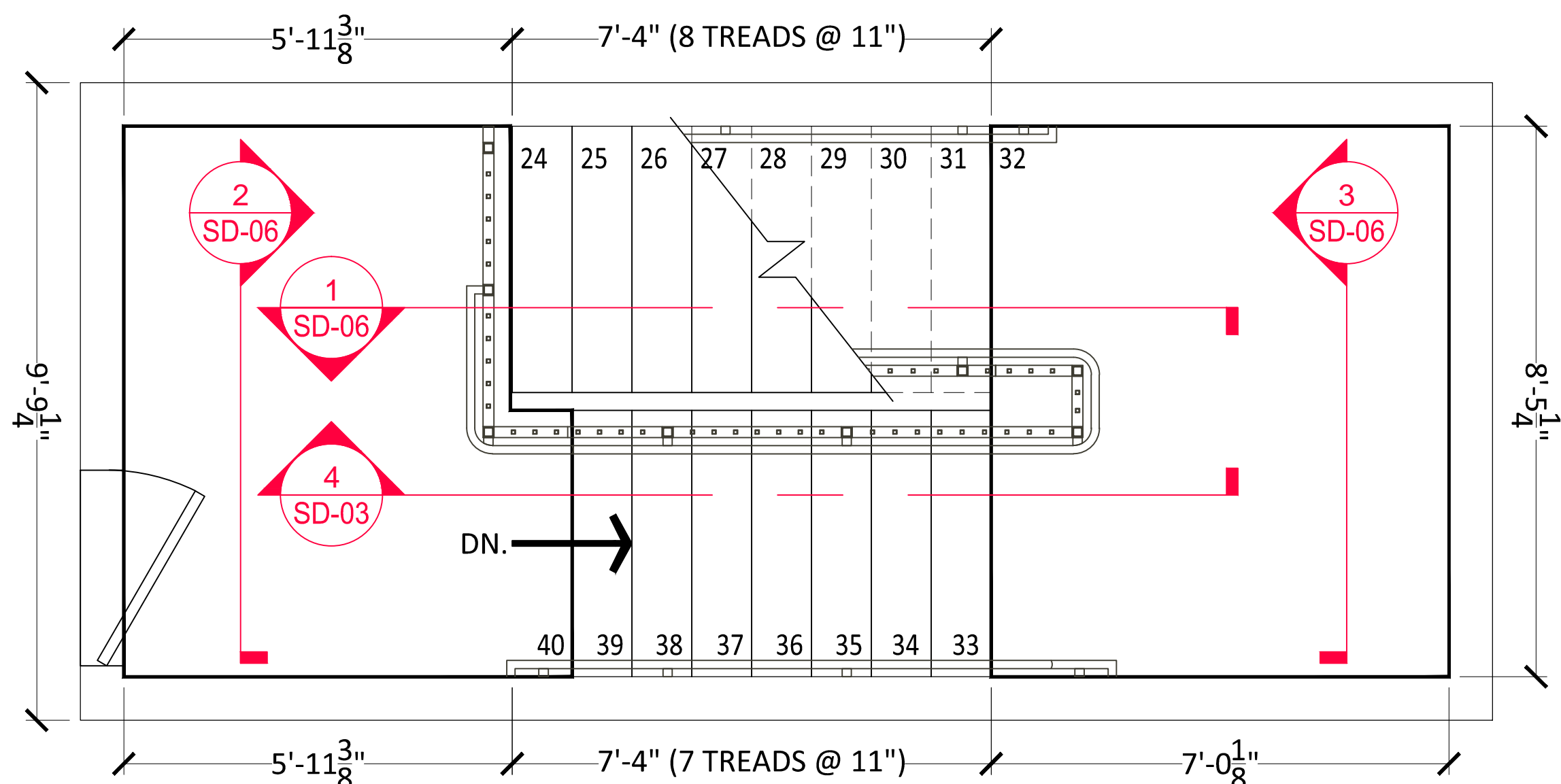
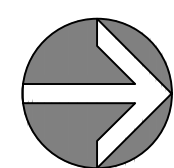
\\NETWORKDRIVE\Public\Contractors\Coastal\Faro Blanco\Hyatt Hotel\Stairs\Shop Drawings\CofB Guardrails.dwg - May 30, 2014 - 4:54 pm



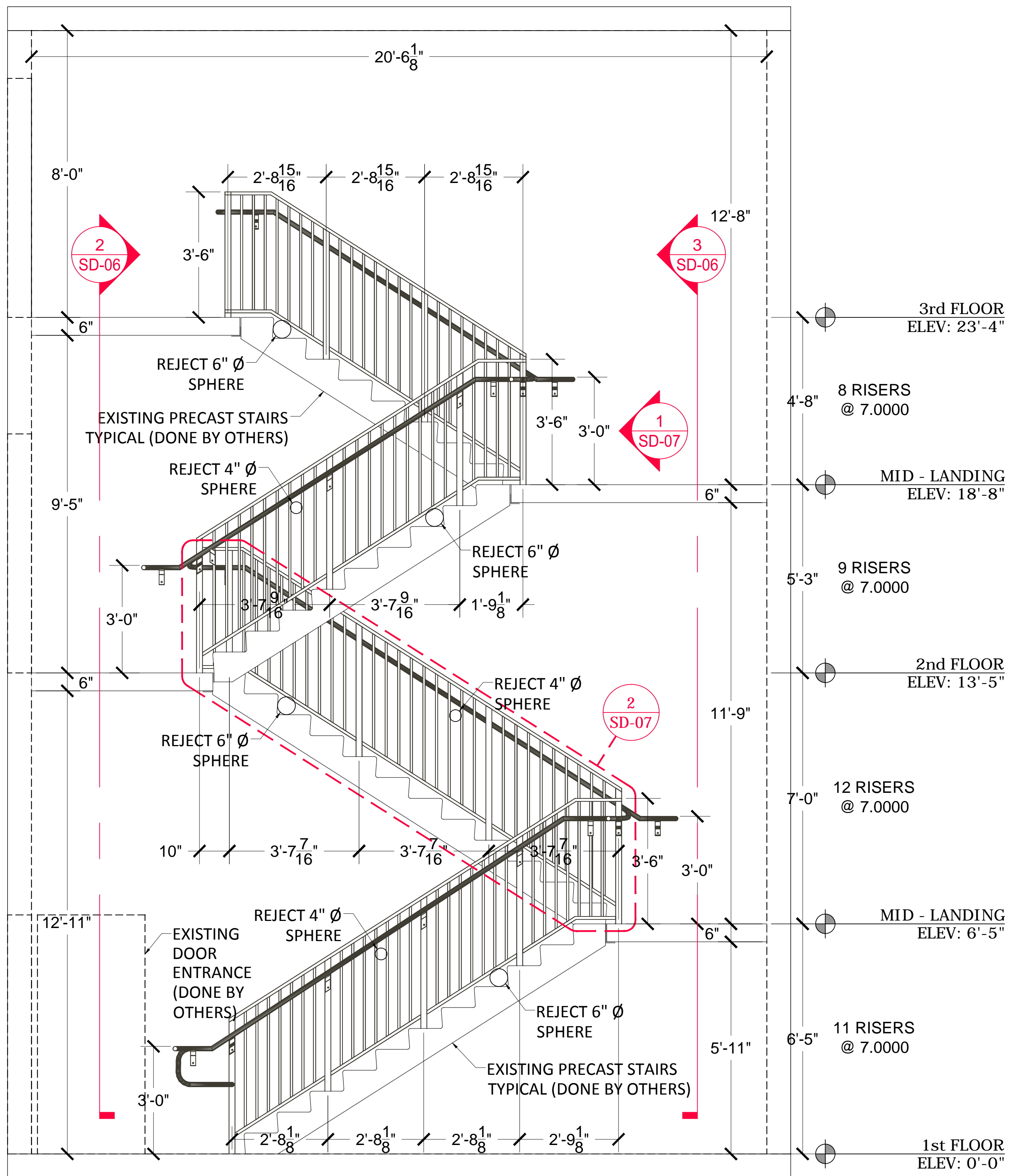
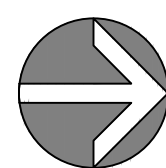
1 STAIR 1 - FIRST FLOOR
SD-03 FULL SCALE: 1/2" = 1'-0" (24"X36")
HALF SCALE: 1/4" = 1'-0" (13"X19")



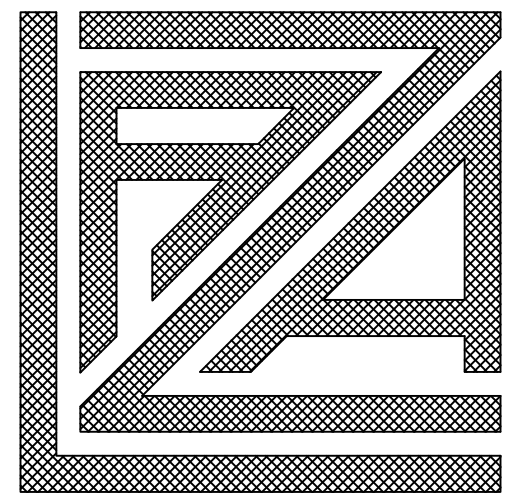
2 STAIR 1 - SECOND FLOOR
SD-03 FULL SCALE: 1/2" = 1'-0" (24"X36")
HALF SCALE: 1/4" = 1'-0" (13"X19")



3 STAIR 1 - THIRD FLOOR
SD-03 FULL SCALE: 1/2" = 1'-0" (24"X36")
HALF SCALE: 1/4" = 1'-0" (13"X19")



4 STAIR 1 - SECTION
SD-03 FRONT VIEW
FULL SCALE: 1/2" = 1'-0" (24"X36")
HALF SCALE: 1/4" = 1'-0" (13"X19")



**LAZA IRON
WORKS, INC.**

7251 N.Miami Ave.
MIAMI, FLORIDA 33150
TEL. (305)-754-8200
FAX. (305)-754-8222

DESCRIPTION

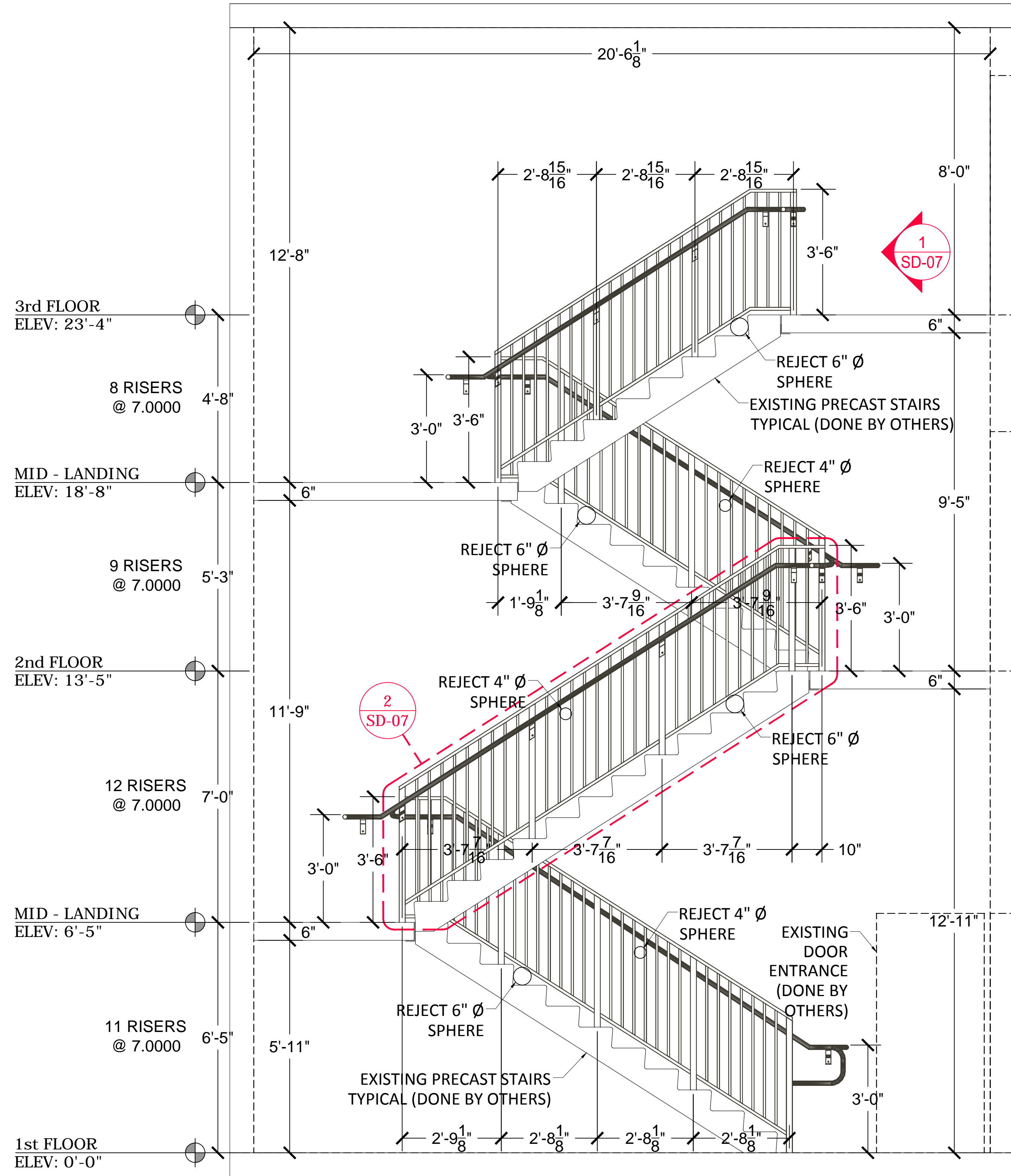
GUARDRAIL AND HANDRAIL
STAIR 1 - PLAN AND SECTION
HYATT HOTEL FLORIDA KEYS
FARO BLANCO - SITE 1
1996 Overseas Highway, Marathon, FL.

DATE
05-24-2014

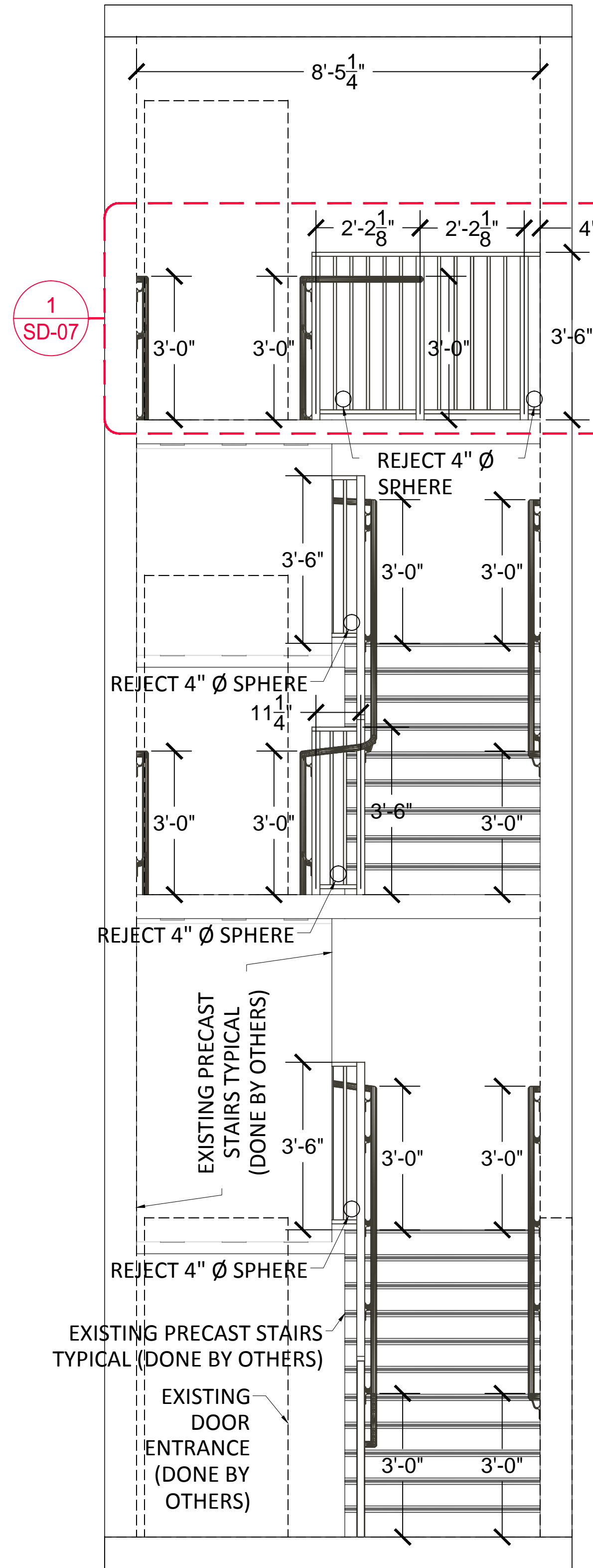
REVISIONS

SD- 03
4 OF 9

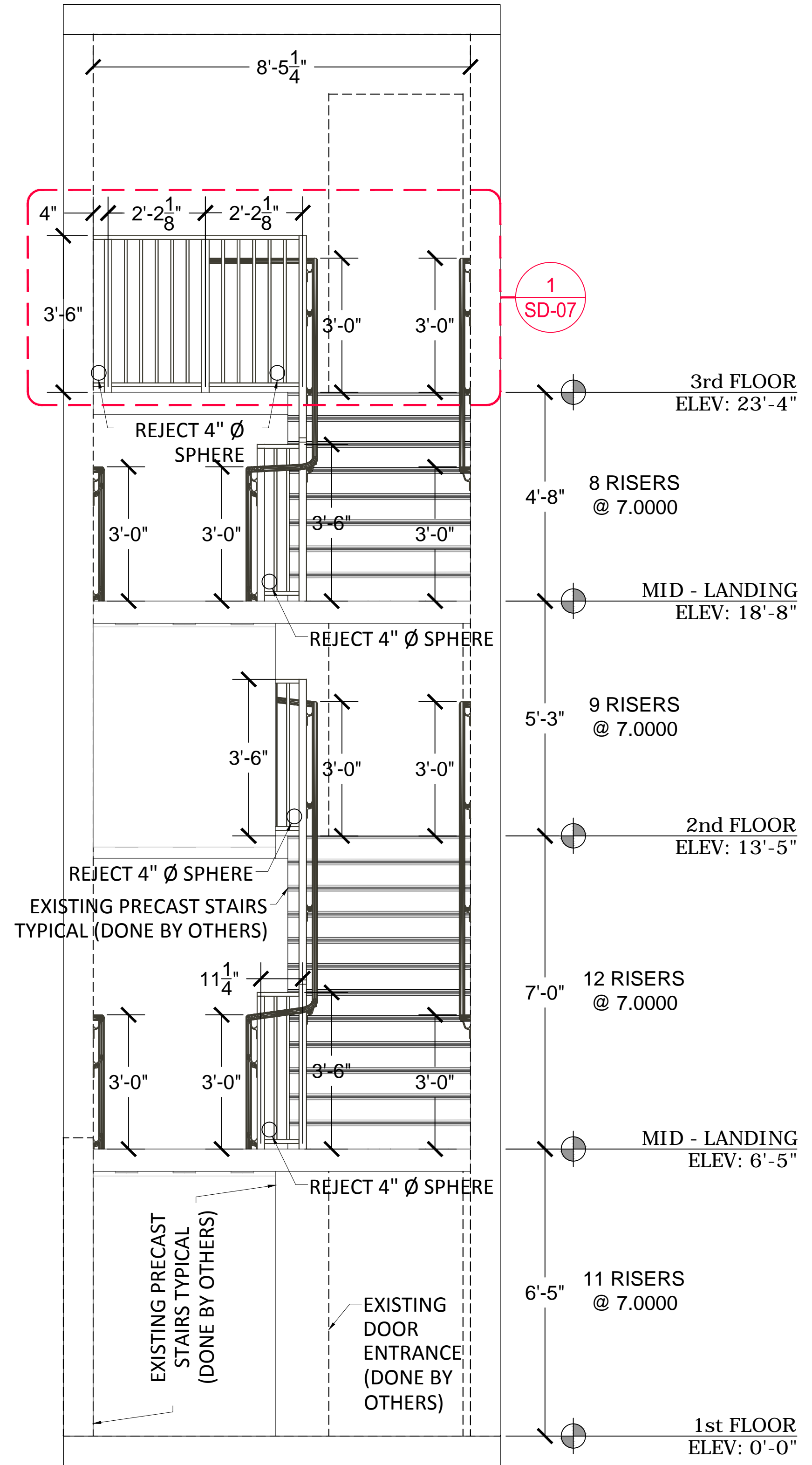
PATH FILE: \\NETWORKDRIVE\\Public\\Shared\\Contractors\\Coastal\\Faro Blanco\\Hyatt Hotel\\Stairs\\Shop Drawings\\CofB Guardrails.dwg - May 30, 2014 - 4:55 pm



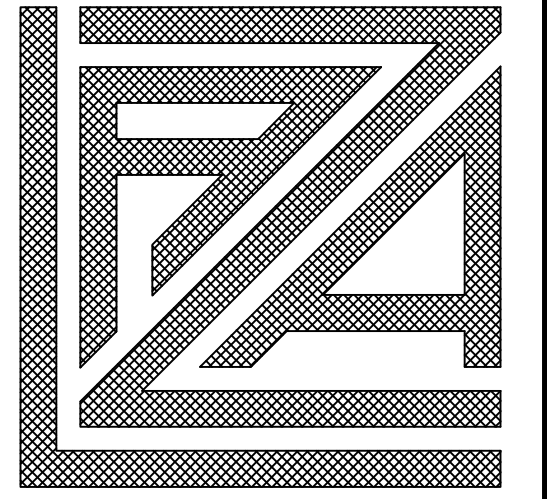
1 STAIR (TYP.) SECTION
SD-06 REAR VIEW
FULL SCALE: 1/2" = 1'-0" (24"X36")
HALF SCALE: 1/4" = 1'-0" (13"X19")



2 STAIR (TYP.) SECTION
SD-06 LEFT VIEW
FULL SCALE: 1/2" = 1'-0" (24"X36")
HALF SCALE: 1/4" = 1'-0" (13"X19")



3 STAIR (TYP.) SECTION
SD-06 RIGHT VIEW
FULL SCALE: 1/2" = 1'-0" (24"X36")
HALF SCALE: 1/4" = 1'-0" (13"X19")



**LAZA IRON
WORKS, INC.**

7251 N.Miami Ave.
MIAMI, FLORIDA 33150
TEL. (305)-754-8200
FAX. (305)-754-8222

DESCRIPTION

GUARDRAIL AND HANDRAIL
STAIR (TYPICAL) SECTIONS
HYATT HOTEL FLORIDA KEYS
FARO BLANCO - SITE I
1996 Overseas Highway, Marathon, FL.

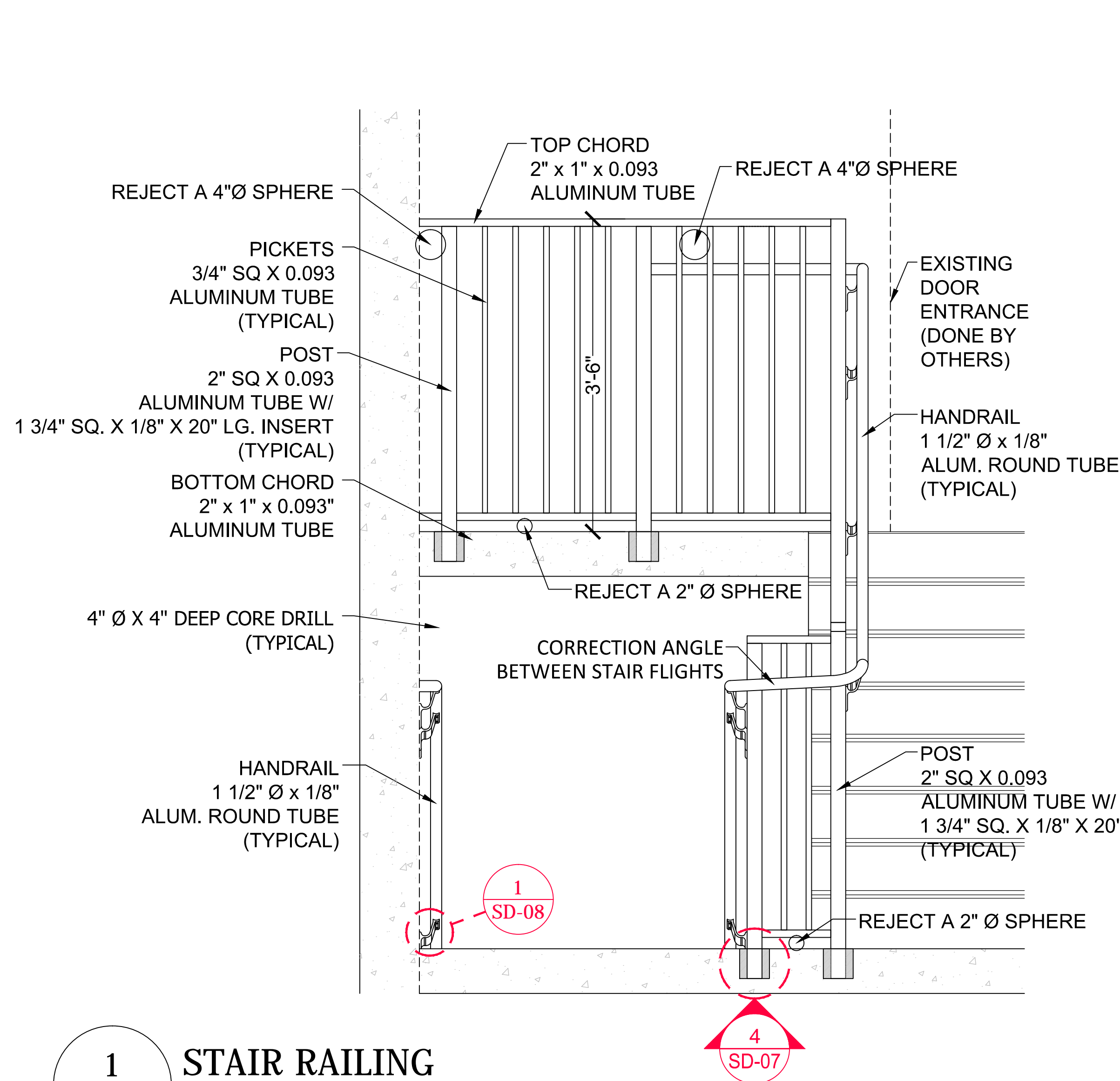
DATE
05-24-2014

REVISIONS

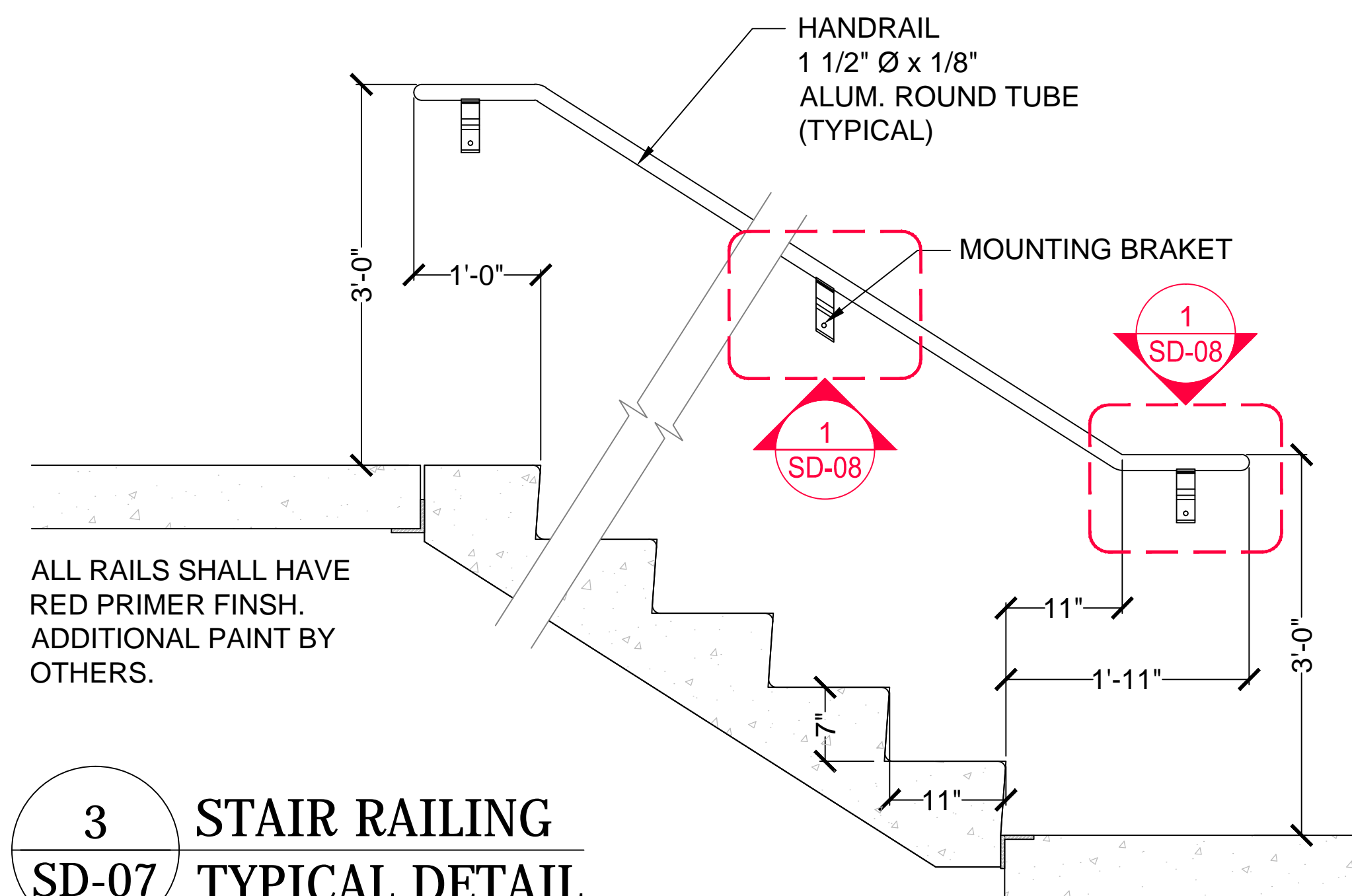
SD- 06

7 OF 9

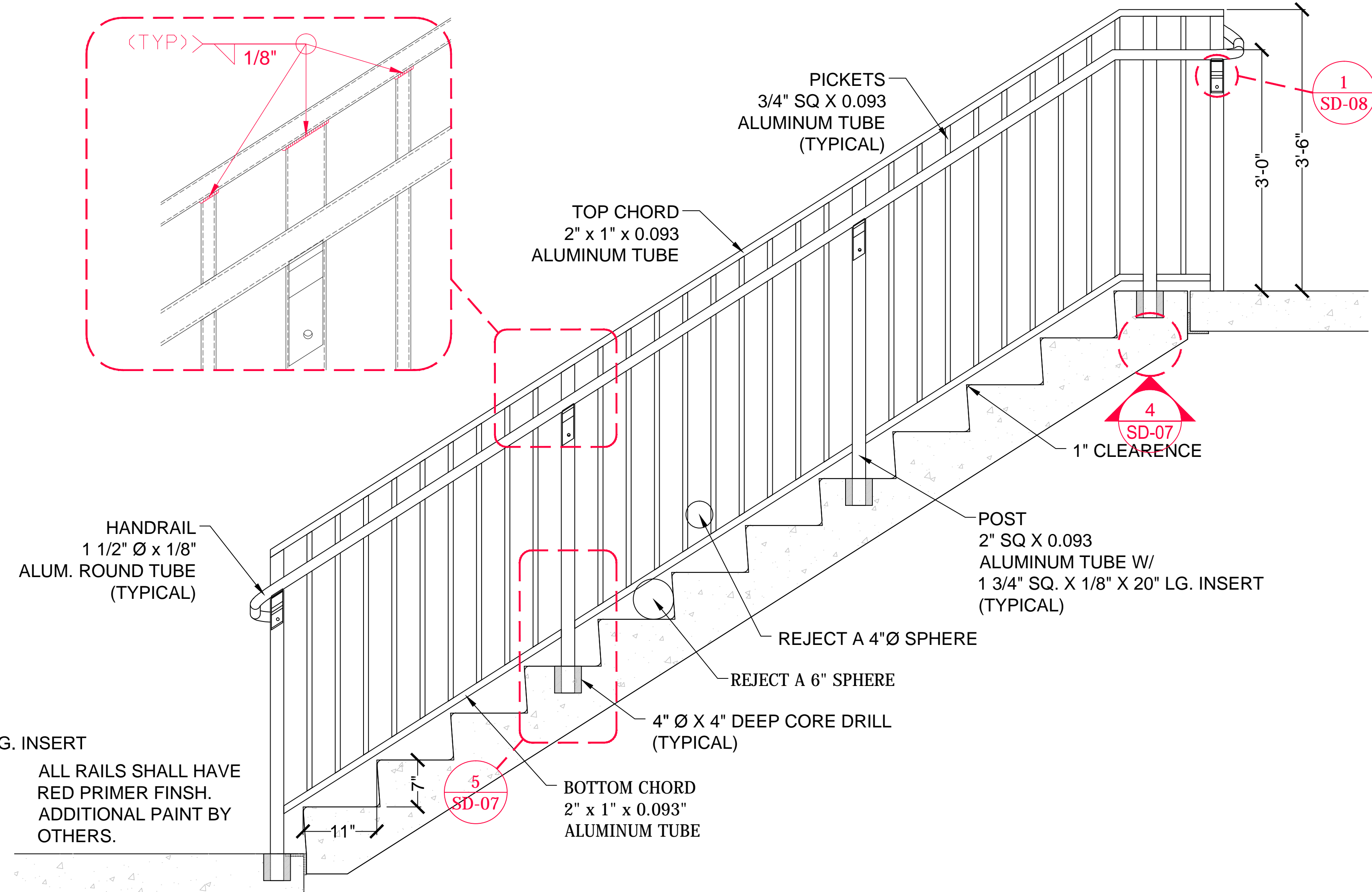
PATH FILE: \\NETWORKDRIVE\\Public\\Contractors\\Coastal\\Faro Blanco\\Hyatt Hotel\\Stairs\\Shop Drawings\\CofB Guardrails.dwg - May 30, 2014 - 4:55 pm



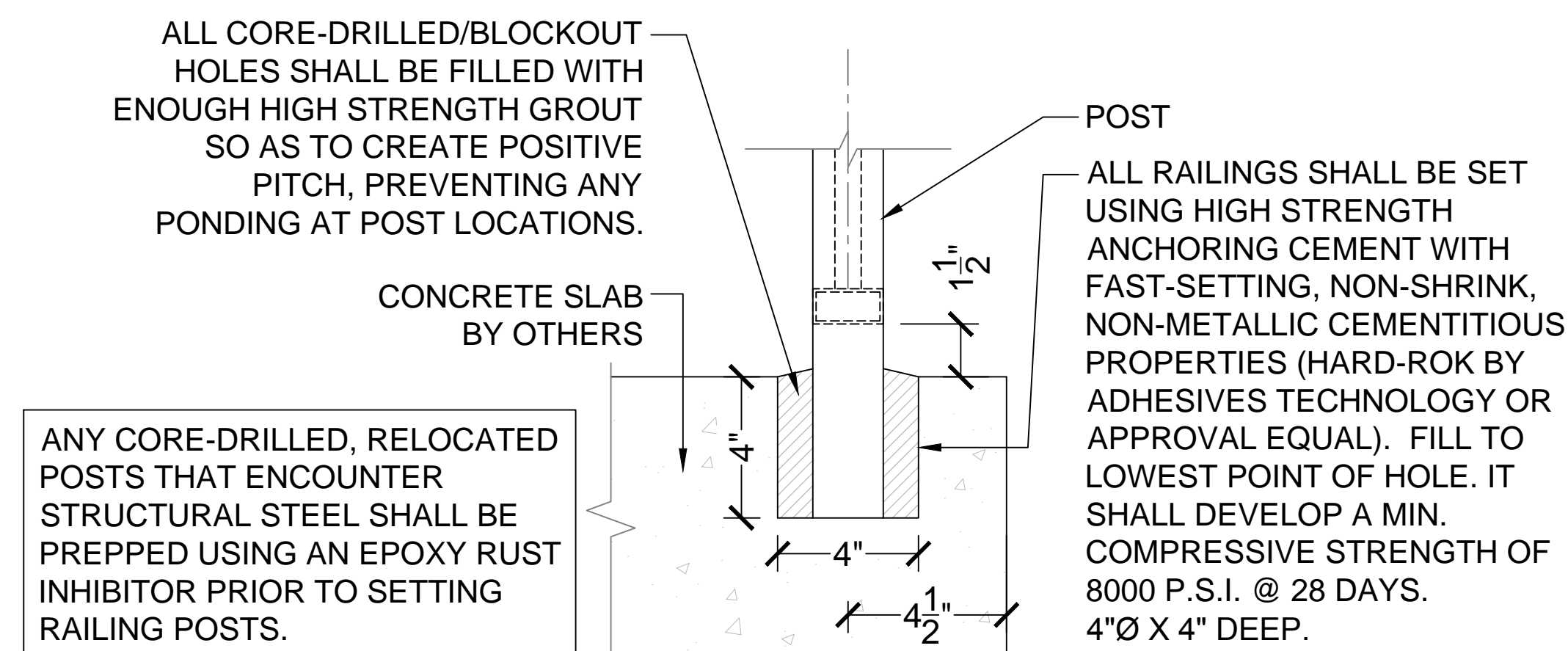
1
SD-07 STAIR RAILING
TYPICAL DETAIL
FULL SCALE: 1" = 1'-0" (24"X36")
HALF SCALE: 1/2" = 1'-0" (13"X19")



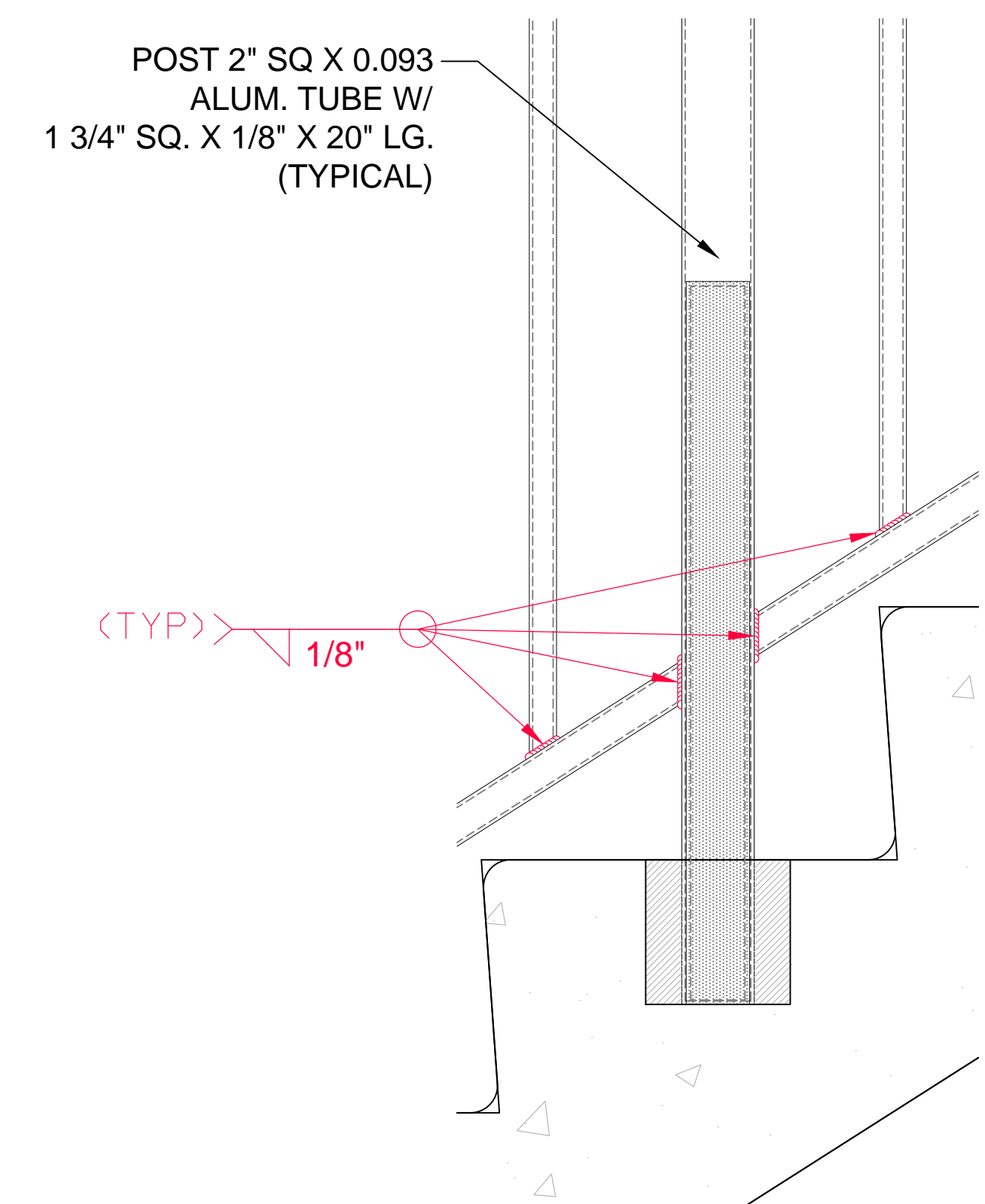
3
SD-07 STAIR RAILING
TYPICAL DETAIL
FULL SCALE: 1" = 1'-0" (24"X36")
HALF SCALE: 1/2" = 1'-0" (13"X19")



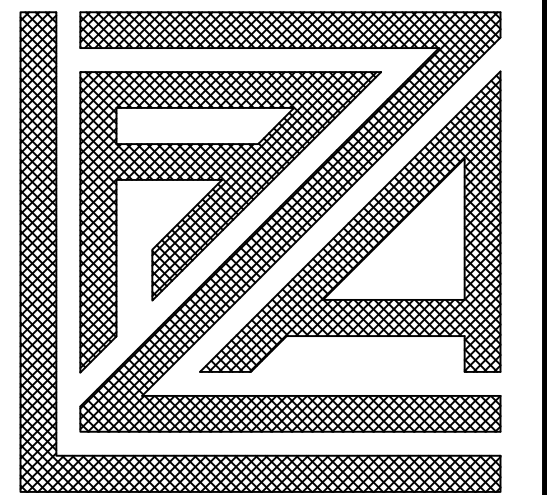
2
SD-07 STAIR RAILING
TYPICAL DETAIL
FULL SCALE: 1" = 1'-0" (24"X36")
HALF SCALE: 1/2" = 1'-0" (13"X19")



4
SD-07 CORE DRILL
TYPICAL DETAIL
FULL SCALE: 3" = 1'-0" (24"X36")
HALF SCALE: 1 1/2" = 1'-0" (13"X19")



5
SD-07 INSERT POST
TYPICAL DETAIL
FULL SCALE: 3" = 1'-0" (24"X36")
HALF SCALE: 1 1/2" = 1'-0" (13"X19")



**LAZA IRON
WORKS, INC.**

7251 N.Miami Ave.
MIAMI, FLORIDA 33150
TEL. (305)-754-8200
FAX. (305)-754-8222

DESCRIPTION

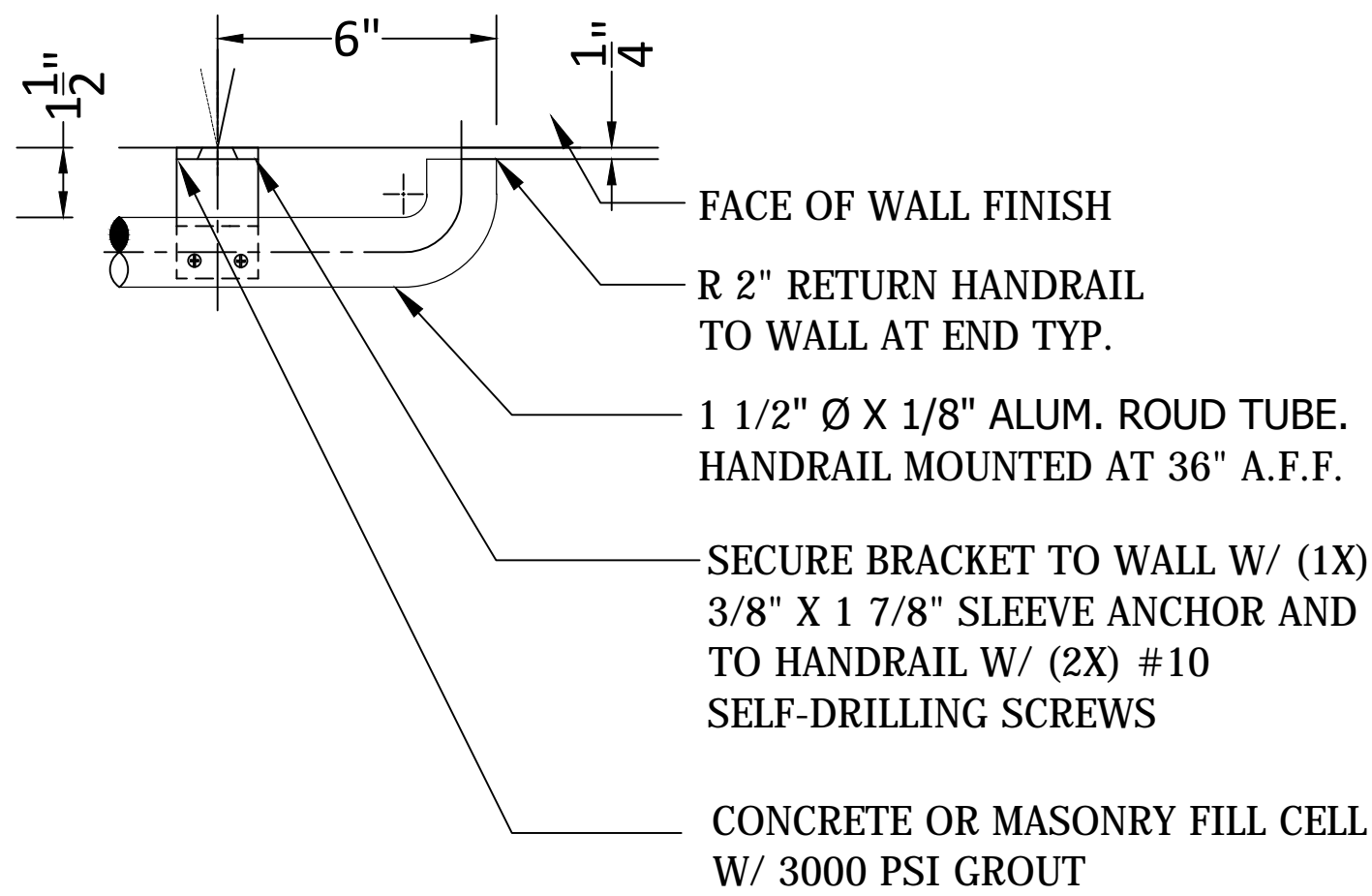
GUARDRAIL AND HANDRAIL
GENERAL DETAILS
HYATT HOTEL FLORIDA KEYS
FARO BLANCO - SITE I
1996 Overseas Highway, Marathon, FL.

DATE
05-24-2014

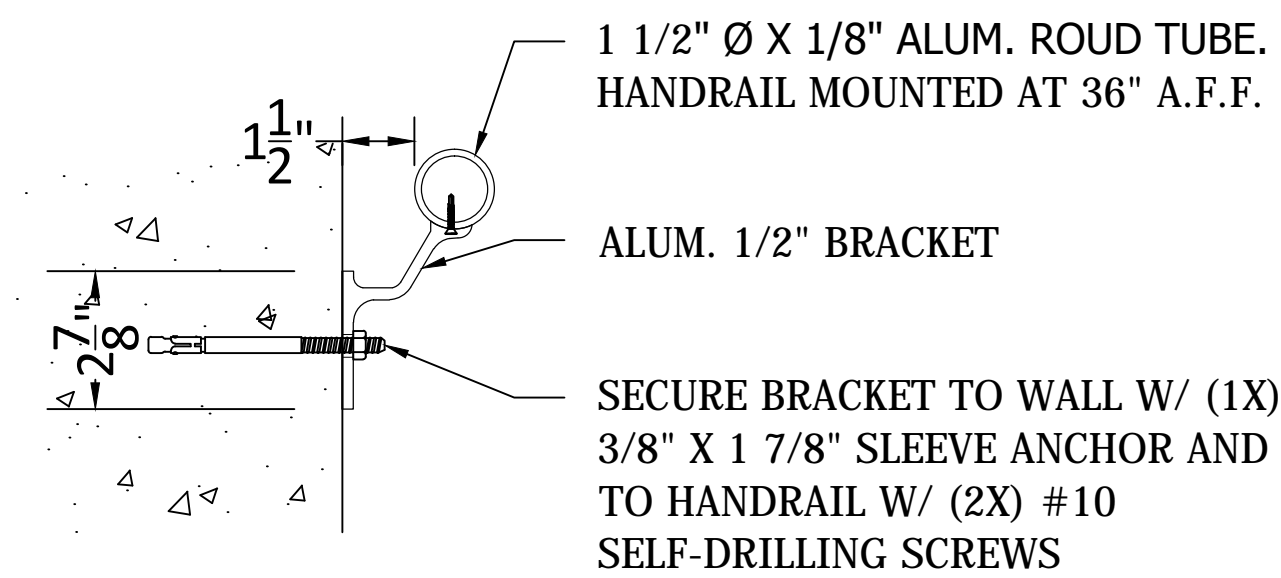
REVISIONS

SD-07
8 OF 9

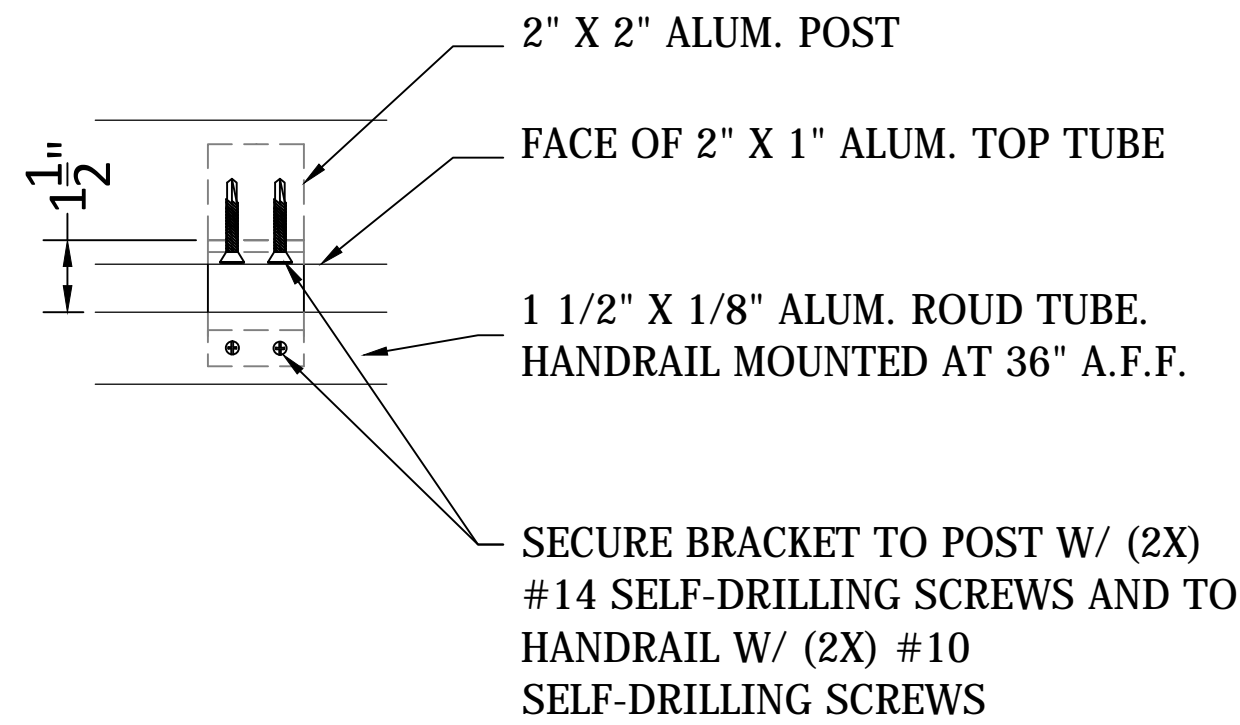
PATH FILE: \\NETWORKDRIVE\\Public\\Shared\\Contractors\\Coastal\\Faro Blanco\\Hyatt Hotel\\Stairs\\Shop Drawings\\Cad Files\\CGFB Guardrails.dwg - May 30, 2014 - 4:55 pm



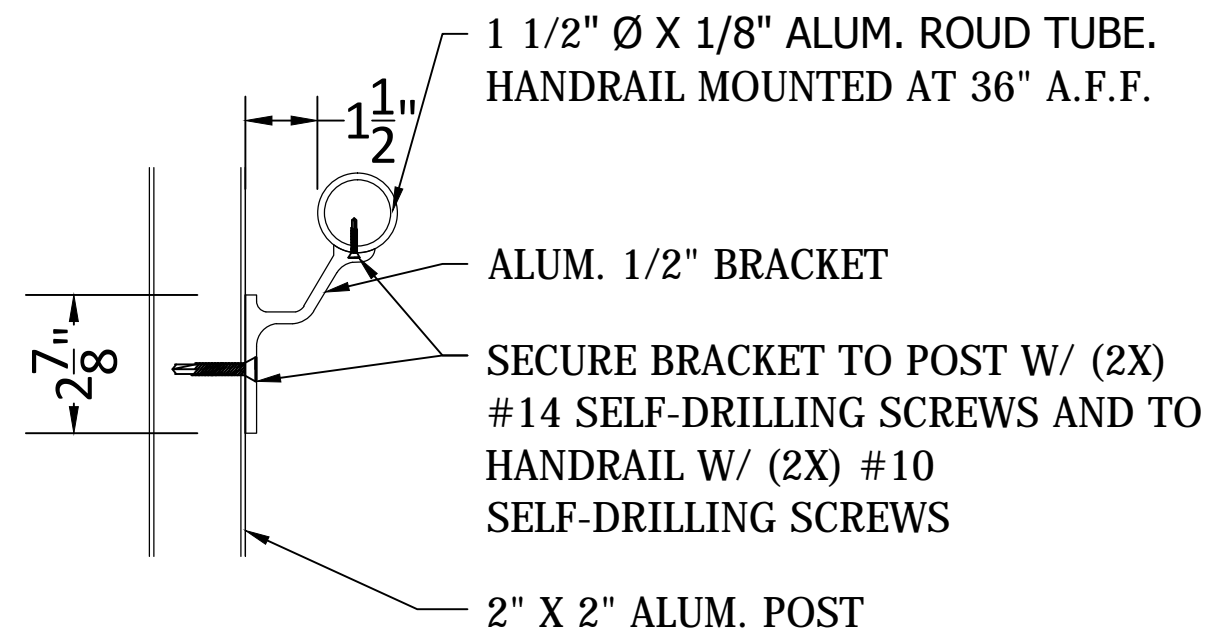
DETAIL A - PLAN VIEW
BRACKET TO WALL



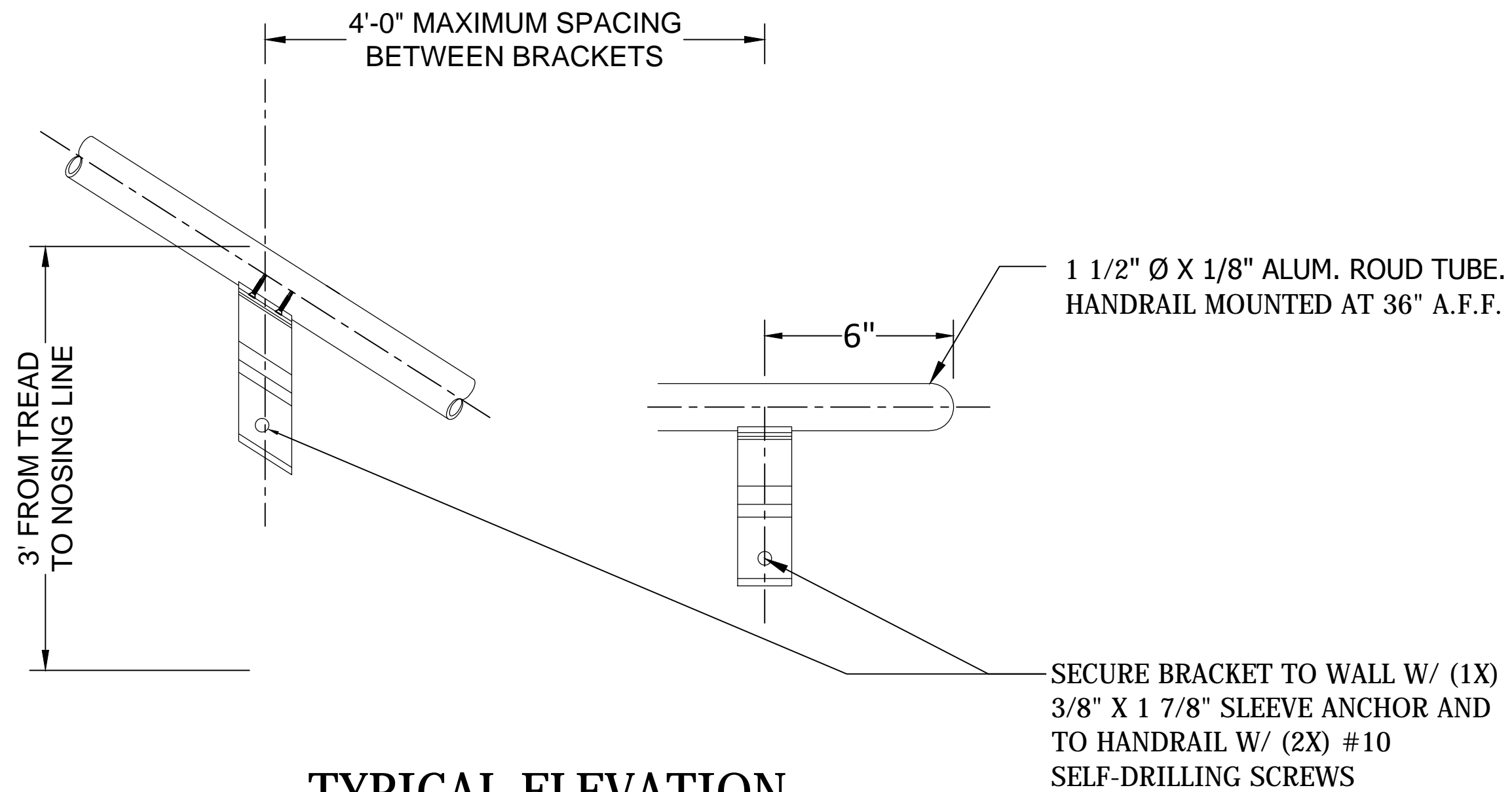
SIDE VIEW A



DETAIL B - PLAN VIEW
BRACKET TO POST



SIDE VIEW B



TYPICAL ELEVATION

1

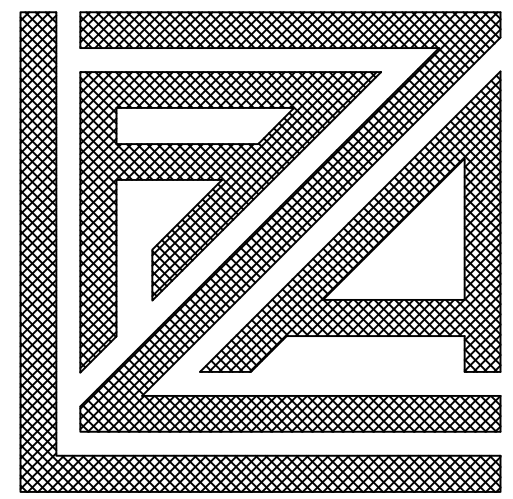
SD-08

BRACKETS

TYPICAL DETAIL

FULL SCALE: 3" = 1'-0" (24"X36")

HALF SCALE: 1 1/2" = 1'-0" (13"X19")



LAZA IRON
WORKS, INC.

7251 N.Miami Ave.
MIAMI, FLORIDA 33150
TEL. (305)-754-8200
FAX. (305)-754-8222

DESCRIPTION

GUARDRAIL AND HANDRAIL
CONNECTION - SECTIONS
HYATT HOTEL FLORIDA KEYS
FARO BLANCO - SITE 1
1996 Overseas Highway, Marathon, FL.

DATE
05-24-2014

REVISIONS

SD- 08
9 OF 9